

# Outdoor BBQ Shed + Pergola Brief

Location: Southern Highlands, NSW - Postcode 2577

Site Area: 5m x 5m elevated timber deck

## PROJECT SCOPE

Seeking a custom-built outdoor BBQ kitchen and pergola to enhance our main entertaining deck.

Project must comply with Exempt and Complying Development Codes for NSW.

## KEY REQUIREMENTS

### 1. BBQ / Outdoor Kitchen Bench

- Fully or partially enclosed and lockable for security
- Must accommodate: Gas BBQ (Weber), Pizza oven (Ooni), Charcoal grill insert
- Can be standalone or integrated into pergola footprint

### 2. Pergola Structure

- Black powder-coated aluminium, minimalist design
- Open/louvred roof with integrated LED strip lighting
- Can be separate or combined with BBQ kitchen

### 3. Compliance with NSW Codes:

Pergola / Deck Roof:

- Area not to exceed 25m<sup>2</sup>
- No enclosing walls above 1.4m
- Setback minimum 900mm from boundaries
- Roofwater must connect to stormwater system

#### BBQ Shed / Outdoor Kitchen:

- If classed as shed: max 20m<sup>2</sup>
- If BBQ-only: max 4m<sup>2</sup>
- Setback 900mm minimum from boundaries
- Roofwater must not impact neighbours

#### GENERAL CONSIDERATIONS

- Moderate to high wind exposure in winter
- Dark, contemporary style
- Flexibility for blinds or future add-ons preferred

# Outdoor BBQ Shed + Pergola Brief

## Inspiration + Reference Images



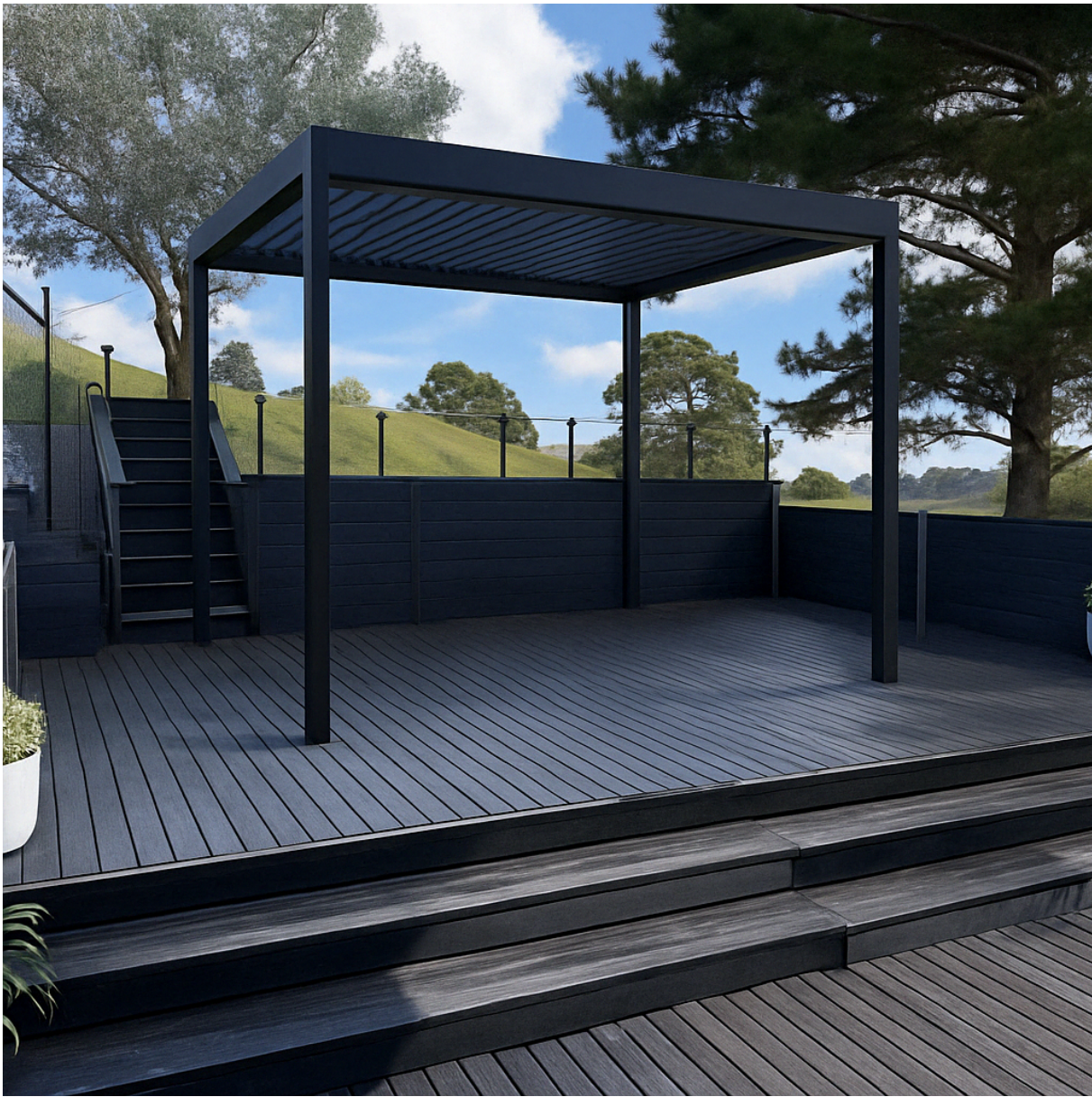
*Current Deck Area (5x5m site)*



*Final Mockup - Outdoor Kitchen + Pergola (Perspective View 1)*



*Final Mockup - Outdoor Kitchen + Pergola (Perspective View 2)*



*Final Mockup - Pergola and Open Deck Structure*

8:05 



15 April  
10:28 am



*Dark BBQ Kitchen Design Inspiration*



*Fully Enclosed BBQ Shed Concept (Roller Doors)*



*Evening Entertaining Concept - Lighting + Bar*