

# THE CABIN 85

85m<sup>2</sup>



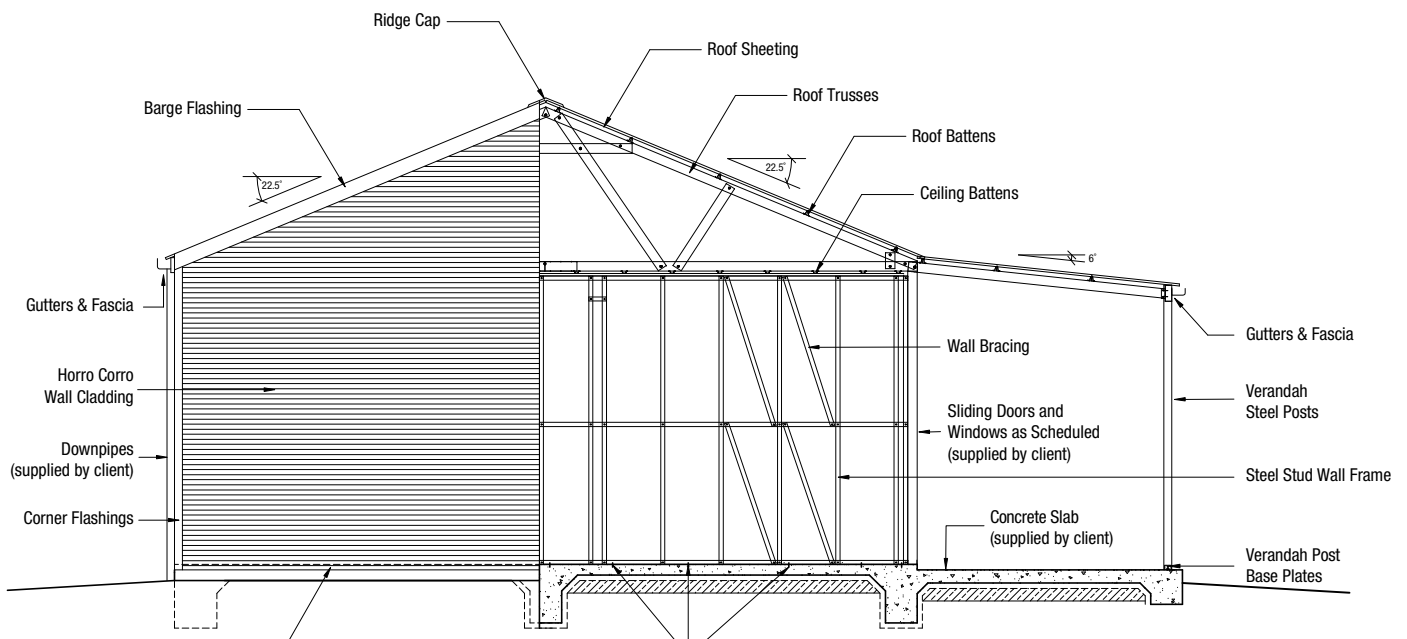
## The perfect Granny flat or weekend retreat.

The Weekender is the perfect place to get away from the hustle and bustle of everyday life. The appearance of the exterior echoes traditional homesteads, with a wide front verandah, as well as generous windows to let in all that natural light. The corrugated sheeting looks modern, especially when the right colour is selected. Kitchen and living areas are open plan and this DIY kit has a front verandah.

# KIT HOME STANDARD INCLUSIONS

Your steel kit home comes standard with the following inclusions:

- External and internal stud frame walls and roof trusses
- Internal framing predrilled for electrical and plumbing
- Horizontal COLORBOND® steel wall sheeting
- Corrugated ZINCALUME® steel roof sheeting
- COLORBOND® steel ridge capping, barge and flashings
- COLORBOND® steel gutters and fascias
- ZINCALUME® steel verandah posts
- All bracketry, bolts and screws provided
- Drawings for council submission
- Full engineering certification and plans



Designed for  
the owner  
builder



A range  
of stylish  
designs



Cyclonic  
versions  
available



Termite  
Resistant



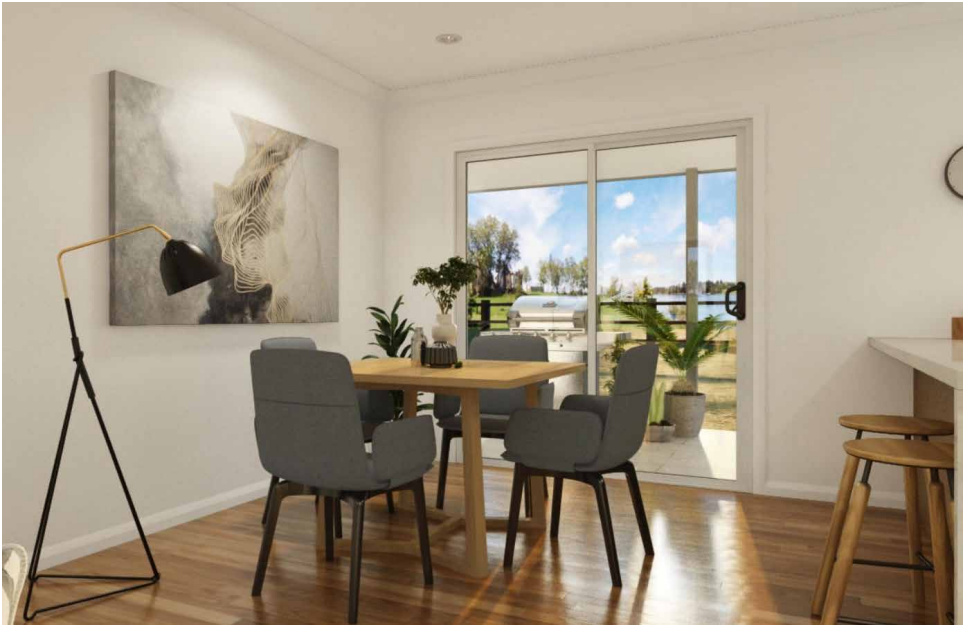
Affordable  
housing  
alternative



Friendlier  
to the  
environment



Council  
Approval  
Guarantee



## FAQ'S

### What do Wide Span Homes supply?

We supply the steel shell and structure of your new home, enabling you to source the rest without having to pay a builder's margin. Many of our competitors offer the full package including windows, doors, gyprock and plumbing – however, this comes at a price inflated by the additional margins. Our steel kit homes have been designed for the owner builder.

### What do I need to supply?

Being the owner builder offers tremendous flexibility as you are in control of the ultimate look of your home. You will need to source trades, builders, doors, windows, thermal break, insulation, gyprock, flooring, fixtures, lighting and all other aspects of fitting out your home from your preferred suppliers. You are also left to take care of purchasing all appliances, furnishings and landscaping your property.

### What about plumbing and electrical work?

It's amazing how much you can save by project managing your kit home build. Whilst you will need to hire contractors to do the work that requires special skills and/or licenses (like plumbing and electrical), you can save in other areas by completing the tasks yourself or enlisting the help of family and friends.

### Does it take much time?

Ultimately, this is up to you! As the builder you will need to coordinate your time, materials and trades effectively. Done right however, your home will be built to schedule! By being an owner builder, you will have the distinct advantage of working to a deadline that suits your needs – not somebody else's! Working weekends, after work hours or by simply taking some annual leave will put you on your path to building your own home in a time frame that suits you.

### How do I put the Frame & Trusses together?

We believe in simplicity and erecting our buildings is just that, simple! We provide all of our owner builders with a comprehensive set of floor and panel plans that clearly outlines each and every section in the most simplistic manner. Our panel-by-panel plans contain easy to understand instructions about what is required at each stage.



## AVAILABLE OPTIONS

### The Flooring System

There are two flooring options available, the price advertised is for the house to go on a slab. The second option involves steel posts, bearers and joists for the entire bottom floor, with this option all you would need to supply is the concrete around the posts and your choice of timber flooring, be it polished timber flooring or particle board.

Consider the following before deciding:

1. Price of concrete vs raised flooring system.
2. How will an elevated house affect you? Many owner builders prefer to use the flooring system because they can stand the building first then do the plumbing. The flooring system's height is also beneficial if you are using composting toilets.
3. What option will be the most aesthetically pleasing? Try imagining how your house would look if it was elevated off the ground. Which option best meets your requirements?

Both are conventional ways of building and come with full engineering plans.

### Raised Flooring System Options

	Non CYC (N3)	CYC (C2)
600 system inc Front Verandah	\$8,450	\$8,600
600 system inc Front & Rear Verandah	\$10,250	\$10,500
1500 system inc Front Verandah	\$10,100	\$13,550
1500 system inc Front & Rear Verandah	\$11,900	\$18,100

Steel bearers, joists and posts to raise the floor above ground level are provided. Excludes flooring, stairs or balustrade. Raised flooring systems are not available in snow load areas.

### Other Custom Options

Customise your Kit Home to fit your vision and requirements with our range of available options.

	Non CYC (N3)	CYC (C2)
BlueScope Steel COLORBOND® roof sheeting upgrade	\$500	\$550
Removal of external wall sheeting	-\$1,700	-\$1,700
2.5m Front & Rear Verandah	\$4,100	\$4,550
Upgrade Wind Classification to N4	\$7,650	N/A

### Snow Load (only available on slab)

	Non CYC (N3)	CYC (C2)
0 kpa - 1.5 kpa	\$3,600	N/A
1.5 kpa - 2.0 kpa	\$9,500	N/A
2.0 kpa - 2.5 kpa	\$14,250	N/A

All quoted prices (including extras) will be fixed for a 2 month period commencing from the date that a purchase agreement is issued. Once manufacturing commences, the price is fixed.



Images are for illustrative purposes and to be used as a guide only. They show upgrades such as front doors and other features that are not included in the base price. Please refer to specs for full details on inclusions.

# ABOUT WIDE SPAN HOMES

**Our steel kit homes have been designed for the owner builder or owner manager.**

## Our History

Wide Span Homes is one of Australia's leading providers of steel kit homes and has garnered a reputation as a "no compromise" option for many Australians looking for a quality kit home made from Australian Steel. We wholesale premium steel kit homes to the public and manufacture locally using premium quality Bluescope Steel. Wide Span Homes has been an important part of Wide Span Sheds since its founding on the Gold Coast in September 2000.

## Australian Standards Compliance

Our kit homes are designed in accordance with the Building Code of Australia and the National Construction Code (NCC).

## Premium Quality

All Wide Span Homes are manufactured from Australian BlueScope Steel using a combination of Genuine BlueScope - 450MPa GALVSPAN® cold-rolled structural members, TRUECORE® steel stud and truss framing, and ZINCALUME® and COLORBOND® steel sheeting options.

## RELAX! WE DELIVER TO YOU.

Please discuss the time frames for your purchase with your sales person.

## Manufacturing & Distribution Locations

Wide Span Homes networked manufacturing helps control logistics costs, reduces manufacturing times and enables the delivery from a local depot to site for most of our customers. Your sales person will discuss delivery options with you.

From time of order, the manufacture and delivery of your steel kit will take between six and eight weeks.

## Council Approval Guarantee

Our steel kit homes come with a Council Approval Guarantee, ensuring they exceed Australia's Class 1 building codes. If your design doesn't meet council requirements, we'll refund your deposit. Trust our experience for a hassle-free path to your dream home—choose Wide Span Homes for unmatched quality and peace of mind.

Visit [www.widespanhomes.com.au/council-approval-guarantee/](http://www.widespanhomes.com.au/council-approval-guarantee/) for full Terms & Conditions.



# GENERAL SPECIFICATION

The kit home general specifications are set out below.

## Standards and codes

This building is designed in accordance with the following codes and standards: NCC: 2022 AS/NZS 1170.1:2002 AS/NZS 1170.2:2021 AS/NZS 1170.3:2003 AS/NZS 1170.4:2007 AS 2870:2011 AS 3600:2018 AS 4100:2020 AS/NZS 4600:2018

## Design criteria

Unless otherwise stated, this building is suitable for the site wind classification of up to N3 for non cyclonic and C2 for cyclonic. No allowance has been made for earthquake or snow loading. It is the responsibility of the purchaser to ensure that this classification is suitable for the site and proposed building use. This should be obtained from a suitably qualified and insured person/company.

## Dimensions

All dimensions nominated are nominal sizes only.

## Windows and doors

Window and door locations are nominated on the plans. The supply of windows and doors are not included in the quoted price. To avoid on-site damage, these are best purchased locally when required.

## Drawing for Council Submission

Full set of plans for submission to council including engineering approval. Site specific drawings are not provided, eg site plan, drainage plan etc. Site specific reports are also not provided, eg bush fire protection plan, energy efficiency report.

## Roof and wall sheeting

Roof sheeting is supplied in Corodek. Wall sheeting is supplied in Corodek and fixed horizontally.

Fasteners

All connections are tek screwed. Roof and wall screws provided to Climaseal® 4 standard. All other screws class 3.

## Slab

Designs provided for Class A, S, M or H1 soil conditions with a safebearing value >100kPa.

## Environmental characteristics

All components of the steel building are designed to suit the conditions generally described as "non-aggressive". Care must be taken with any steel building to ensure that regular maintenance is carried out. The suitable conditions and maintenance requirements are defined in the various BlueScope Steel Technical Bulletins.

## Gutters

The gutter type supplied will be nominated by our supplier as the most common type for your area.

## Marking, cutting and drilling

Most components are marked for easy identification and placement and are cut to length. It will be necessary to cut and/or drill some components on site.

## Colours

Certain products and areas have a limited colour range. Please consult your representative for more information regarding available colours in your area.

## Down pipes

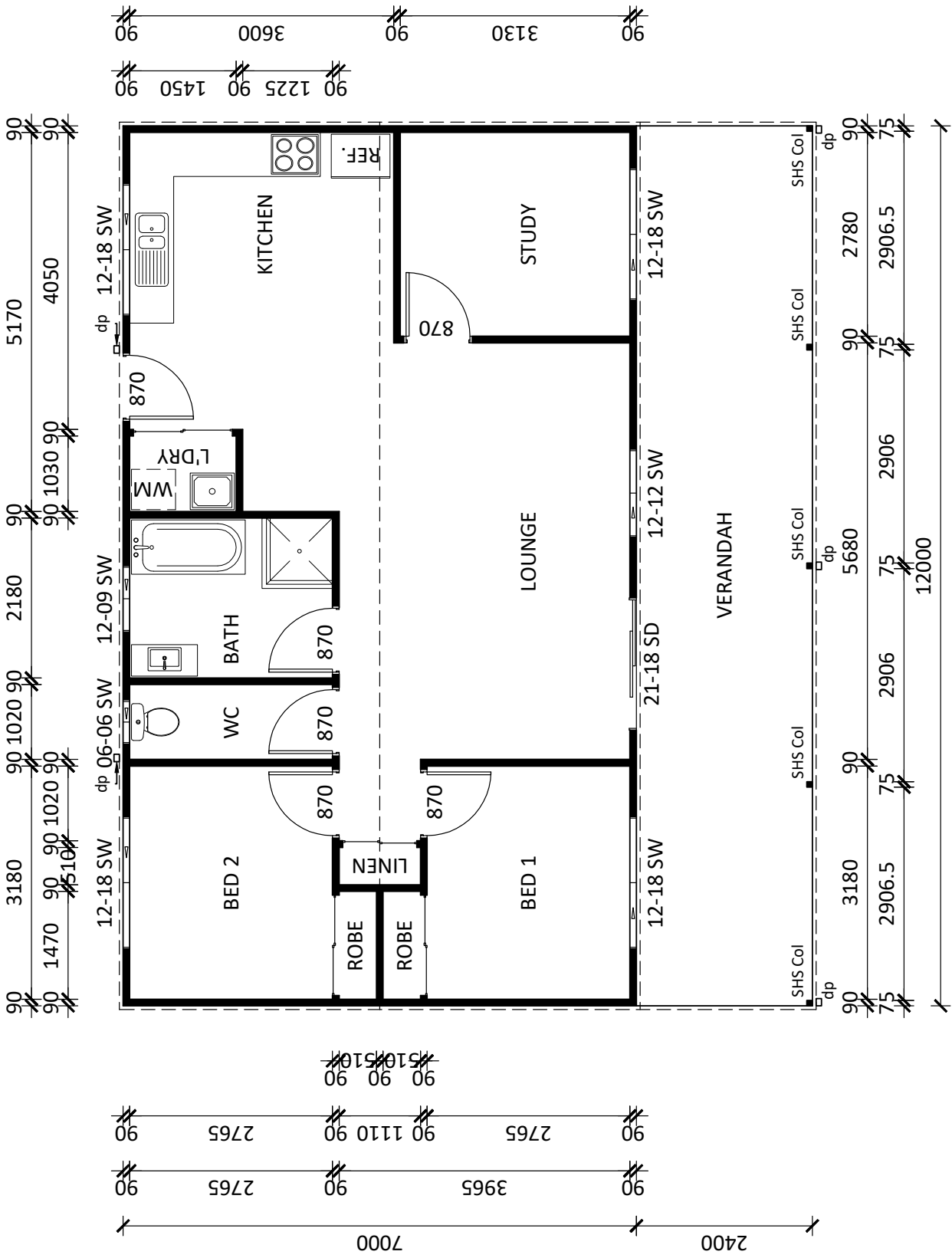
Down pipes are to be provided by others to suit your roof and water tank requirements.

## Delivery

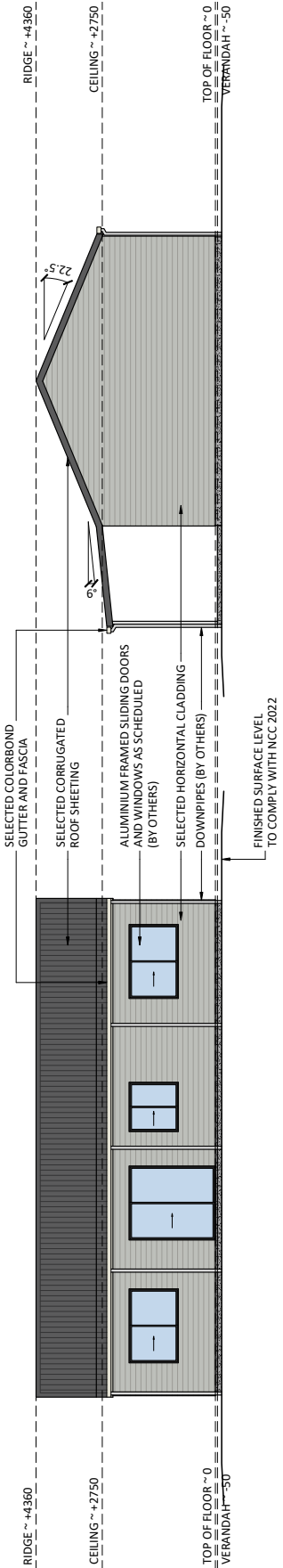
Delivery is quoted for standard delivery routes. Additional fees apply where the address is beyond the normal route. Alternately, delivery can be organised by the customer ex-works.

Ex-works: Collection of your steel kit home will be from our supplier's depots within your nominated city.



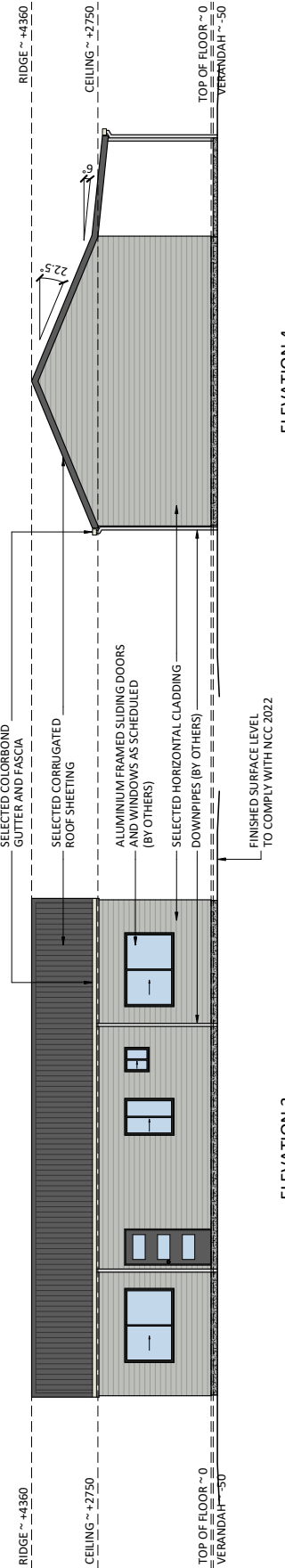


Note: Amenities and Furnishing shown are illustrative only



ELEVATION 2

ELEVATION 1



ELEVATION 4

ELEVATION 3

3.0 ELEVATIONS

## COLOUR RANGE

Fifty years of Australian research and development has created a range of technologies that give genuine COLORBOND® steel its long lasting performance when subjected to some of the harshest Australian conditions. You can be sure you're getting the genuine article by looking out for the COLORBOND® steel branding on the product, or its packaging.

For roofing and walling, check for the ink branding on the reverse side of the sheet. On fencing, look for laser branding on either side of each panel; it appears at least three times in each 2.4m section. For guttering, look on the inside for ink branding, and you will find the protective wrapping that your COLORBOND® steel arrives in is branded too.



 <p>CLASSIC CREAM™</p>	 <p>SURFMIST®</p>	 <p>PAPERBARK®</p>	 <p>EVENING HAZE®</p>	 <p>SHALE GREY™</p>
 <p>IRONSTONE®</p>	 <p>WIND SPRAY®</p>	 <p>PALE EUCALYPT®</p>	 <p>GULLY®</p>	 <p>WOODLAND GREY®</p>
 <p>JASPER®</p>	 <p>MANOR RED®</p>	 <p>DEEP OCEAN®</p>	 <p>BASALT®</p>	 <p>MONUMENT®</p>
 <p>COTTAGE GREEN®</p>	 <p>NIGHT SKY®</p>	 <p>SOUTHERLY®</p>	 <p>BLUEGUM®</p>	
 <p>WALLABY®</p>	 <p>DUNE®</p>			





# READY TO MAKE YOUR DREAM HOME A REALITY?

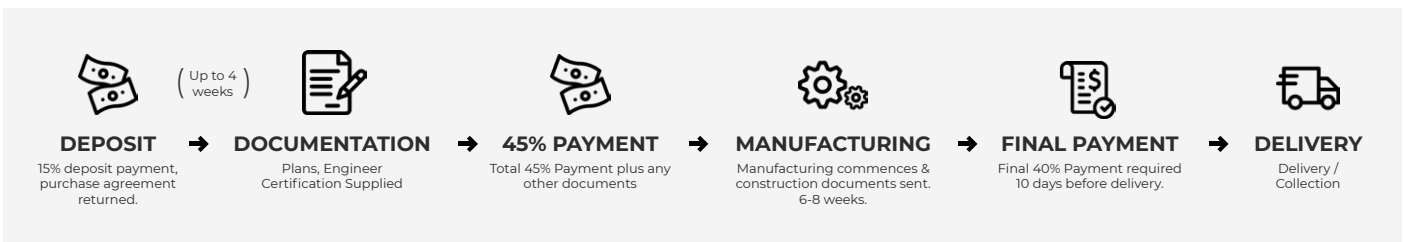
Kick start your Kit Home journey today and take the first step towards the home you've always envisioned.

Complete payment information including your unique BPAY reference numbers as well as tax invoices can be found in your purchase agreement (contact us to arrange your purchase agreement). This can be in three staged payments: 15% deposit, 45% secondary payment and 40% final payment.

**Please note the following payment guidelines:**

- A) Initial payment of 15% of your contract price will enable you to receive your floor and engineering plans for you to get your council approvals under way (if not approved, this will be refunded in full).
- B) Second payment of 45% of your contract price (see your purchase agreement for actual amount) will commence manufacturing. (Allow approx 8 weeks for manufacture).
- C) Final payment of 40% of your contract price (10 days prior will confirm your delivery).

**Note:** Option A will not secure the price; you will be subject to any global steel price rise; percentage required may vary subject to state government legislation.



Wide Span Homes accepts the following payment methods



\*All pricing is effective from 01/03/2025 and are GST inclusive and in Australian dollars. Non cyclonic and cyclonic pricing is based on QLD, NSW, VIC & SA regions. NT, WA & TAS will incur additional delivery fees. To confirm final pricing in your region please contact your Wide Span sales person. All Kit Home Pricing is for the supply of building frame only including roof and wall sheeting. Due to ongoing product development, the seller reserves the right to make design and engineering changes up to the time of commencing manufacture. C&Z indicates COLORBOND® steel wall sheeting and trim and ZINCALUME® roof. All roofing supplied in ZINCALUME® unless otherwise stated. Building images are representational and are for illustrative purposes only. Whilst every care is taken in the publishing of prices and goods, Wide Span reserves the right to correct any errors or misprints at any time without notice. TRUECORE®, ZINCALUME® and COLORBOND® steel are registered trademarks of BlueScope Steel Limited. For the full terms and conditions go to [www.sheds.com.au/terms-and-conditions](http://www.sheds.com.au/terms-and-conditions) or ask your sales person for a copy.