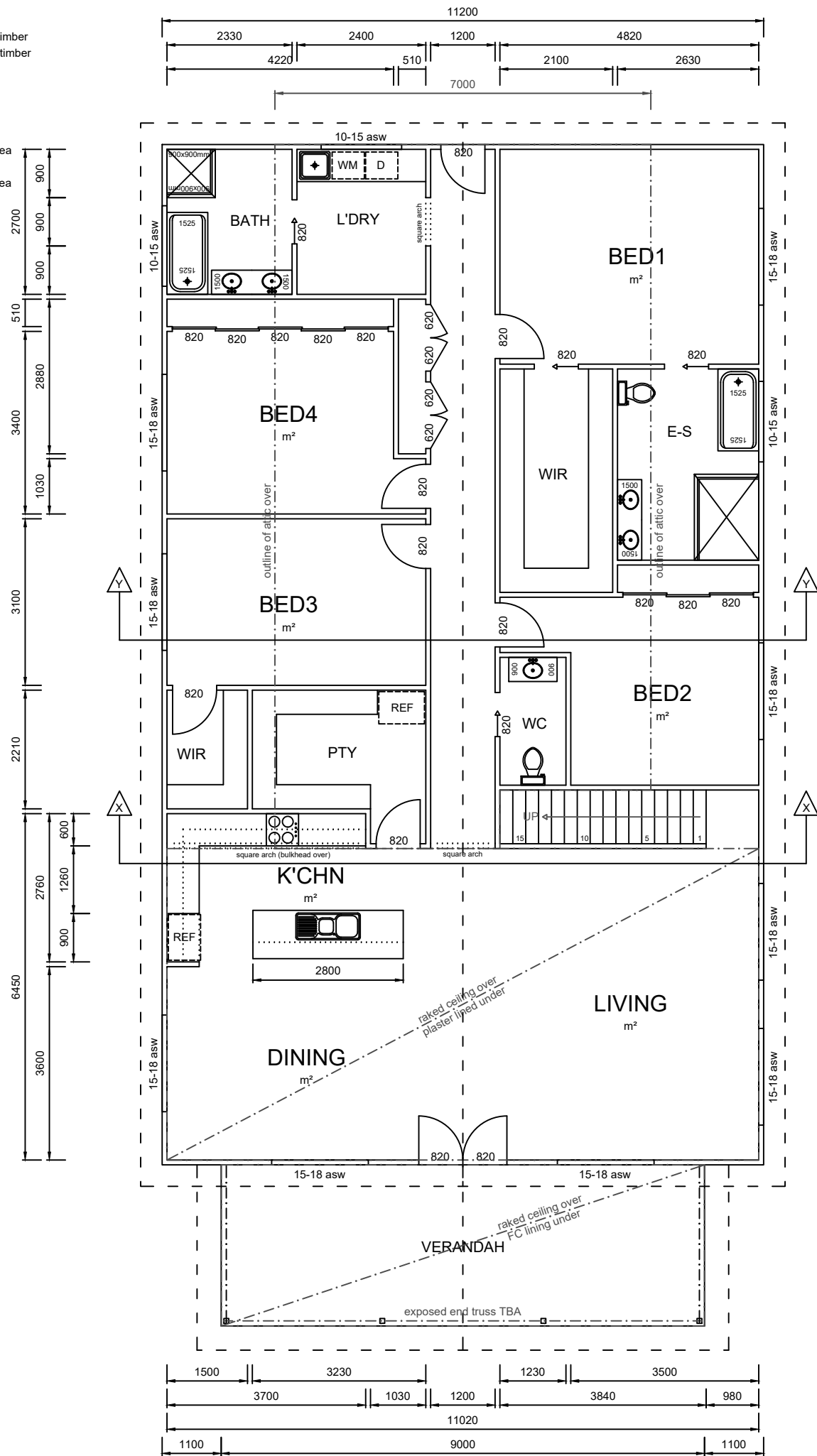
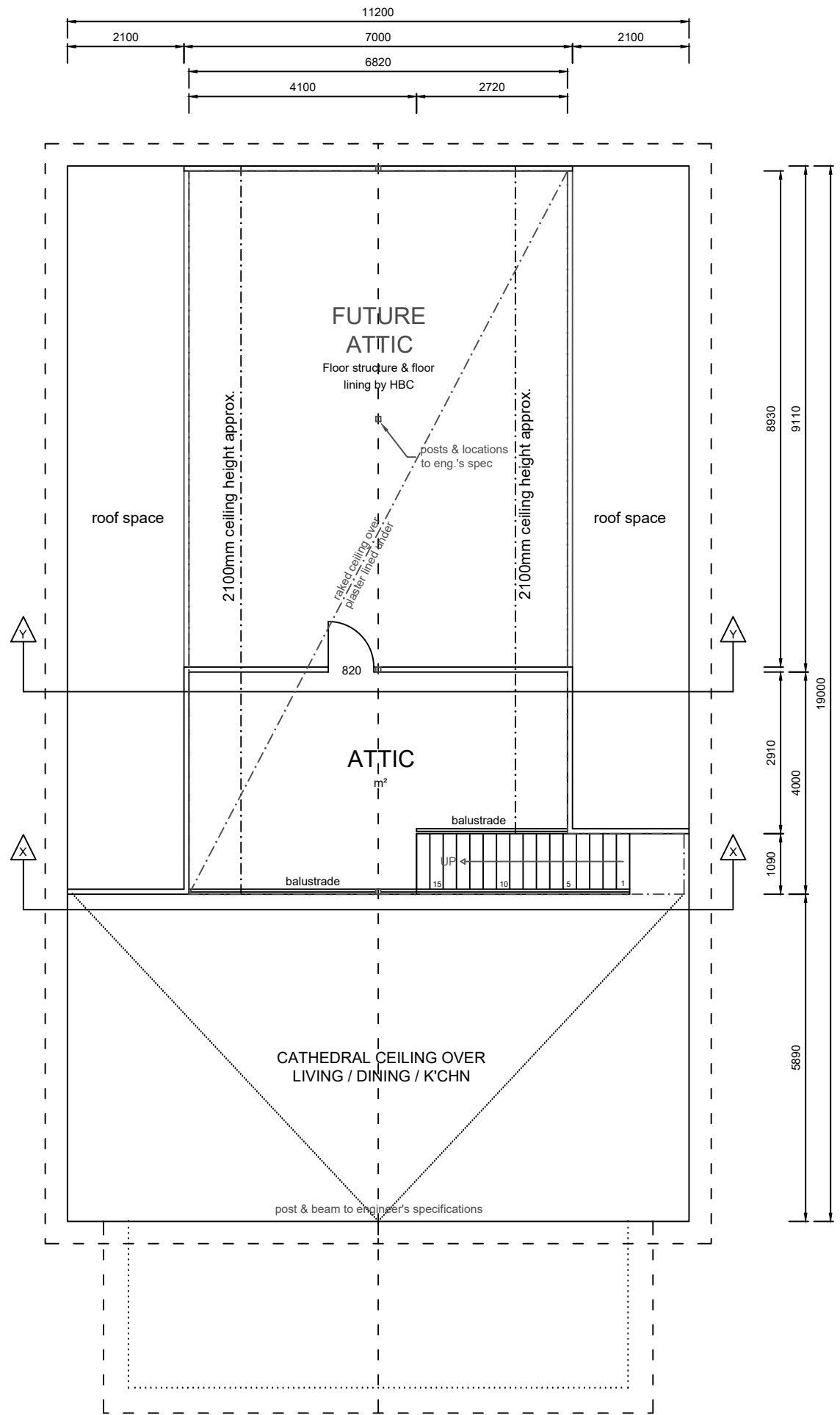


**Notes:**

- a) All internal walls are 90mm thick timber
- b) All external walls are 90mm thick timber
- c) Dimensions are to Wall Frames (unless otherwise noted)
- d) 35° roof pitch
- e) 450mm Eaves where shown
- f) 450mm Overhangs where shown
- g) 88.71m<sup>2</sup> Upper Level Internal Area
- h) 88.71m<sup>2</sup> Upper Level Total Area
- i) 212.80m<sup>2</sup> Lower Level Internal Area
- j) 239.80m<sup>2</sup> Lower Level Total Area
- k) 328.51m<sup>2</sup> Total Area
- l) C2 Wind Rating
- m) BAL TBA



**Lower Level**



**Upper Level**

