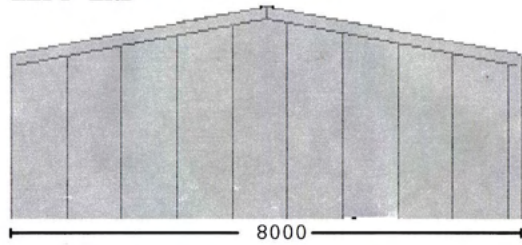
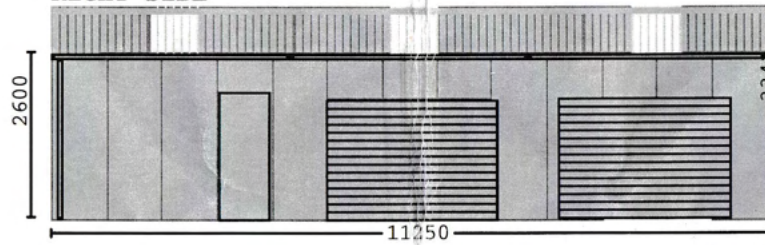


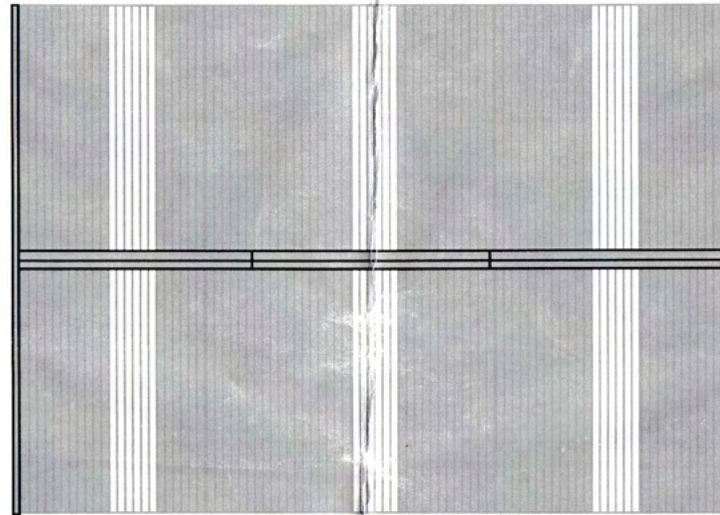
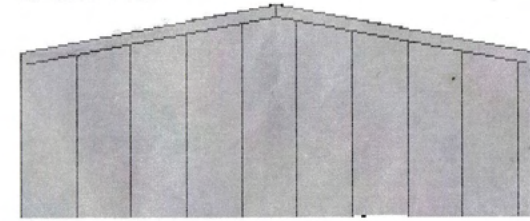
LEFT END



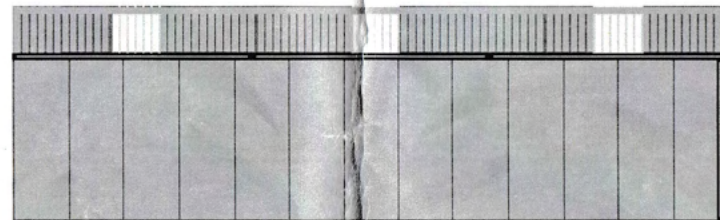
RIGHT SIDE



RIGHT END



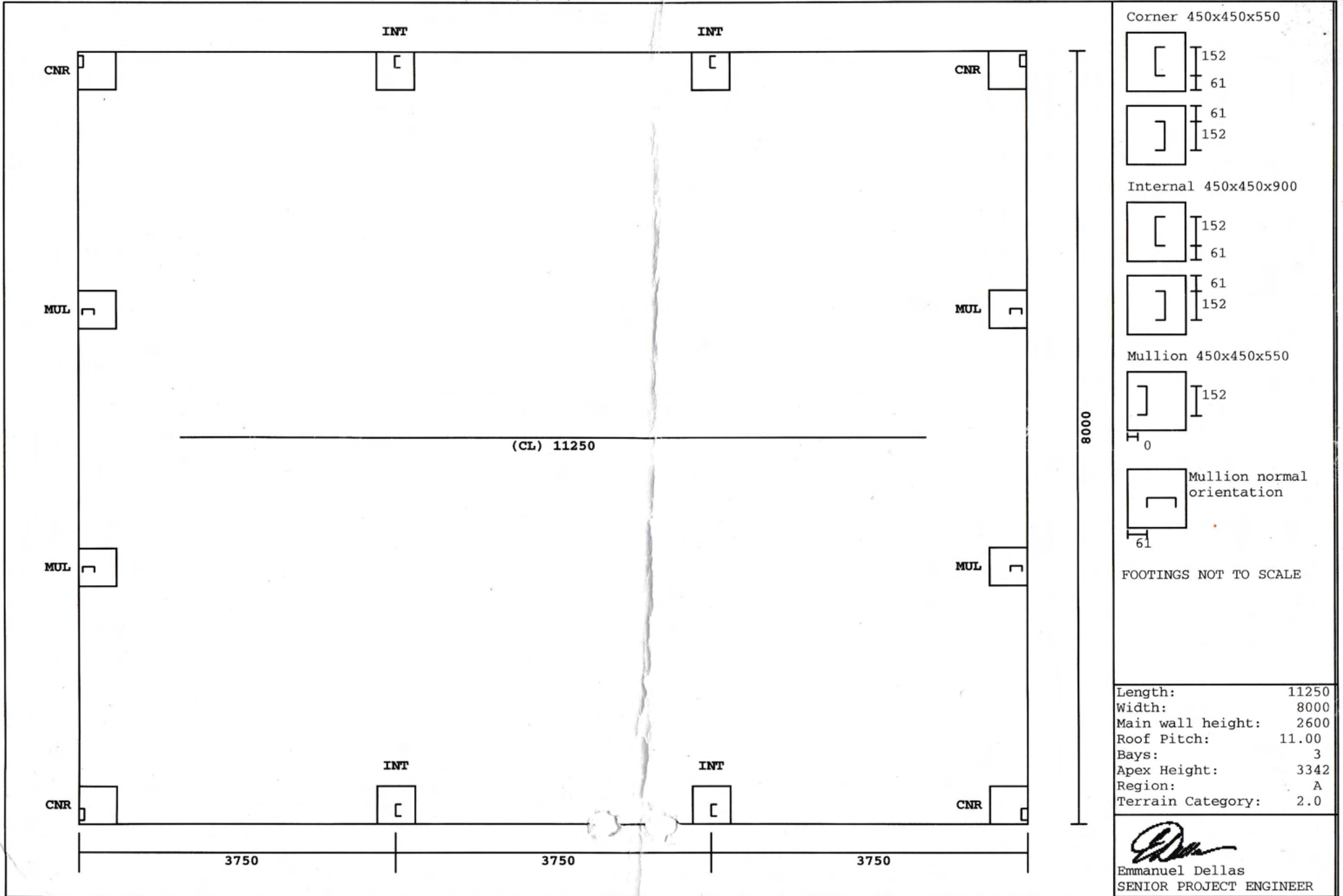
PLAN



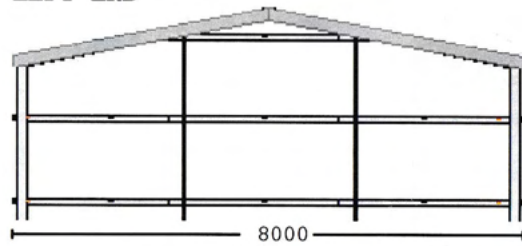
LEFT SIDE

Length:	11250
Width:	8000
Main wall height:	2600
Roof Pitch:	11.00
Bays:	3
Apex Height:	3342
Region:	A
Terrain Category:	2.0

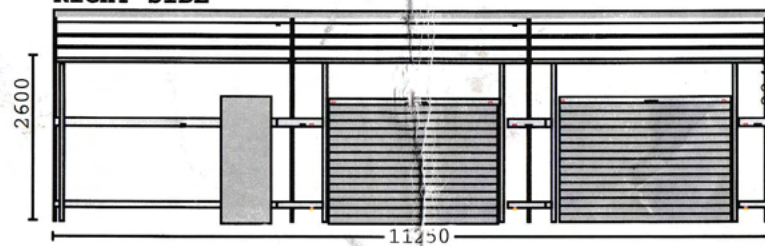
Emmanuel Dellas  
SENIOR PROJECT ENGINEER



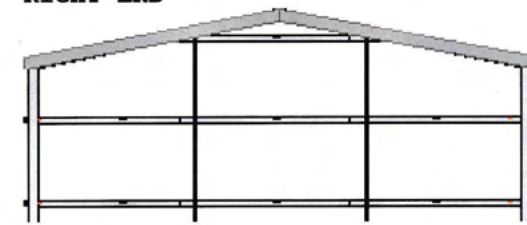
LEFT END



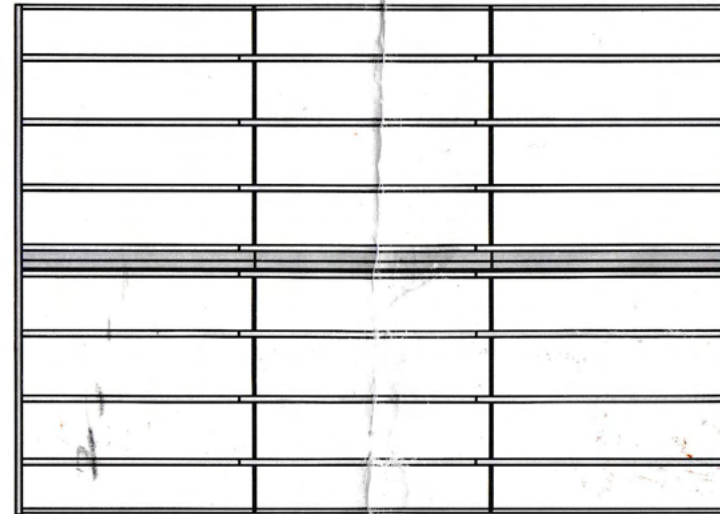
RIGHT SIDE



RIGHT END



Roof 24 TH



PLAN



LEFT SIDE

Length:	11250
Width:	8000
Main wall height:	2600
Roof Pitch:	11.00
Bays:	3
Apex Height:	3342
Region:	A
Terrain Category:	2.0

  
 Emmanuel Dellas  
 SENIOR PROJECT ENGINEER

326. W+2 P x 2  
R x 1 RD x 2

---

## Material Delivery Sheet (Customer copy)

---

**Distributor:**

SHEDS R US (Tas) Pty Ltd  
 PO Box 474  
 4 Export Drive  
 Ulverstone, 7315  
 03 6425 3333, shedsrus@internode.on.net

**Order:**

**Invoice:** UTON2992-Peter Clarke

**Customer name:** REECE HIGH SCHOOL

**Address:** PO Box 1261 Site: Middle Road

**Town:** DEVONPORT

**Post code:** 7310

**Order description:**

**Delivery details:**

## Bill of Materials

Part Code	Quantity	Length	Item	Colour	Description
A-3	254	0.000	Rivets 4-3	WINDSPRAY	RIVET
6-311-0575 CS	792	0.000	Hex No Neo 14-20x22 CL3 Frame Screws		FRAMESCREWS
RZM650 ??	620	0.000	Roof Zip M6-50 All sheet types CB	WINDSPRAY	ROOFSCREWS
6-311-0151-4CS	751	0.000	Hex No Neo 10-16x16 CL3 Wall Screws	WINDSPRAY	WALLSCREWS
DP12075H	10	0.000	DYNABOLT 12x75 Hex Head		BASECLEATDYNABOLT
DP12105H	24	0.000	DYNABOLT 12x105 Hex Head		BASECLEATDYNABOLT
PBSM16030	168	0.000	M16 x 30 Purlin assembly		FRAMEBOLT
6-311-0352-7	72	0.000	Button Heads 8-18x12 Gutter Brkt Fix (Screws)	ZINCALUME	SCREWBUTTONHEAD
SBT	8	0.000	Strap Brace Tensioner		BRACING
6-311-0150-6MP	20	0.000	Wafer Head No Neo 10-16x16 CL3 Stud Cap	ZINCALUME	WAFERHEAD
FAS12030	8	0.000	M12x30 FASCIA bolt and nut		FRAMEBOLT - FASCIA
C42X---	24	4.112	CLADDING Corrugated, .42 BMT, .47 TCT, CB	WINDSPRAY	CLADDING Roof
TSPCCGRYLL	6	4.200	Polycarb Corrugated, 0.80, Grey		SKYLIGHT Roof
KP35CB	1	2.667	CLADDING MINICLAD, .35 BMT, .40 TCT, CB	WINDSPRAY	CLADDING End wall
KP35CB	21	2.625	CLADDING MINICLAD, .35 BMT, .40 TCT, CB	WINDSPRAY	CLADDING Side wall
KP35CB	2	3.466	CLADDING MINICLAD, .35 BMT, .40 TCT, CB	WINDSPRAY	CLADDING End wall
KP35CB	2	3.339	CLADDING MINICLAD, .35 BMT, .40 TCT, CB	WINDSPRAY	CLADDING End wall
KP35CB	5	0.725	CLADDING MINICLAD, .35 BMT, .40 TCT, CB	WINDSPRAY	CLADDING Side wall
KP35CB	2	3.171	CLADDING MINICLAD, .35 BMT, .40 TCT, CB	WINDSPRAY	CLADDING End wall
KP35CB	2	2.793	CLADDING MINICLAD, .35 BMT, .40 TCT, CB	WINDSPRAY	CLADDING End wall
KP35CB	2	3.003	CLADDING MINICLAD, .35 BMT, .40 TCT, CB	WINDSPRAY	CLADDING End wall
KP35CB	2	3.298	CLADDING MINICLAD, .35 BMT, .40 TCT, CB	WINDSPRAY	CLADDING End wall
KP35CB	2	3.129	CLADDING MINICLAD, .35 BMT, .40 TCT, CB	WINDSPRAY	CLADDING End wall
KP35CB	2	2.961	CLADDING MINICLAD, .35 BMT, .40 TCT, CB	WINDSPRAY	CLADDING End wall
KP35CB	2	2.835	CLADDING MINICLAD, .35 BMT, .40 TCT, CB	WINDSPRAY	CLADDING End wall
C15015P	8	3.828	C15015,PUNCHED		RAFTER
C15019P	8	2.600	C15019,PUNCHED		COLUMN
C15019P	4	3.083	C15019,PUNCHED		MULLION
C10012U	6	3.750	C10012,UNPUNCHED		EAVEPURLIN

C10012U	0	2.600	C10012,PUNCHED Roller door jamb diam 14.00, centres 50: W 40		DOOR JAMB
C10012U	2	2.710	C10012,UNPUNCHED Roller door header		DOOR HEADER
TH61100ZA	16	3.987	61x0.95 Top Hat <i>lock</i>		PURLIN/GIRT
TH61100ZA	8	2.691	61x0.95 Top Hat		PURLIN/GIRT
TH61100ZA	8	4.225	61x0.95 Top Hat		PURLIN/GIRT
TH61100ZA	6	3.078	61x0.95 Top Hat		PURLIN/GIRT
TH61100ZA	6	3.987	61x0.95 Top Hat		PURLIN/GIRT
TH61100ZA	2	4.225	61x0.95 Top Hat		PURLIN/GIRT
TH61100ZA	1	4.225	61x0.95 Top Hat		PURLIN/GIRT
TH61100ZA	1	3.183	61x0.95 Top Hat		PURLIN/GIRT
QV115PX---	6	3.850	Quad Gutter 115, High Tensile, CB longer by pc	WINDSPRAY	GUTTER
DP10050X---24	2	0.000	Down Pipe, Plain Face, 0.40 BMT, 2.400 100x50 CB	WINDSPRAY	DOWNPIPE
DP10050X---18	2	0.000	Down Pipe, Plain Face, 0.40 BMT, 1.800 100x50 CB	WINDSPRAY	DOWNPIPE
CF055X---	2	2.910	Corner Flashing 50x50 CB	WINDSPRAY	EXTCNRFLASH
CF055X---	4	2.300	Corner Flashing 50x50 CB	WINDSPRAY	EXTCNRFLASH
CF055X---	4	2.625	Corner Flashing 50x50 CB	WINDSPRAY	EXTCNRFLASH
SIDSGBX---	4	4.362	Garage Barge,CB	WINDSPRAY	BARGE
RTR42X---	3	3.850	Roll Top Ridge Cap, .42 BMT, CB longer by pc	WINDSPRAY	RIDGECAP
NOZ10050ZA	2	0.000	Pop 100x50 Rectangle ZA	ZINCALUME	POP
AST10050X---	2	0.000	Down Pipe Strap 100x50 CB	WINDSPRAY	STRAPS
C15012U	4	2.600	C15012,UNPUNCHED rdoor jams by pc		CTYPE_LAST
FC5050??	1	0.970	PA Door Flash 50x50 CB 1.000	WINDSPRAY	PAFLASH
WMAUS500	0	0.000	Wire Builders Safety 2mm 50mx1.8m Ausmesh		WIRE
QV115SELX---	2	0.000	Quad Stop End 115 L/H CB	WINDSPRAY	STOPEND
SBS6912UGA2.7	2	0.000	Door Jamb, 69x33x1.2bmt, 2.700 Long		DOORJAMB
FLM 300	0	0.000	Aluminium Foil Sisalation, Medium, 60mx1.35m		INSULATION
QV115SEFX---	2	0.000	Quad Stop End 115 R/H CB	WINDSPRAY	STOPEND
QV115---ZA	24	0.000	Quad 115 Internal/Concealed Bracket	ZINCALUME	GUTTERBRACKET
BST321220	2	0.000	Bracing Strap 32x1.2, 20m roll		BRACING
650/37-CB	1	0.000	Sentry 650/37, 180 Deg Opening, PA Door 820x2040 CB	WINDSPRAY	PADOOR
BC100	4	0.000	BC100 Base Cleat		BASECLEAT
BC150	12	0.000	BC150 Base Cleat		BASECLEAT
FBP1003	0	0.000	C100 Roller Door Connector Bracket, unpunched		FPB
MFA165	8	0.000	C150 Mullion Angle Connector		FIXINGANGLE
HB11LP	4	0.000	C150 11 deg L/H Knee Brkt Punched 1.9mm		KNEECONN
HB11RP	4	0.000	C150 11 deg R/H Knee Brkt Punched 1.9mm		KNEECONN
APB11P	4	0.000	C150 11 deg Ridge Brkt Punched 1.9mm		RIDGECONN
EWG64	22	0.000	End Wall Girt Bracket - 50x50x100 edited by pc		EWGB
EPB61S	8	0.000	Single Eave Purlin Brkt C100 TH61100 C15019		EAVEPURLINBRACKET
AC50	2	0.000	50mm Angle Connector		ANGLECONN
R1DF22COL2770	2	0.000	2200HX2770W R1F Roller Door, CB - Keyed Alike	WINDSPRAY	ROLLERDOOR

## PLEASE CHECK MATERIALS for SHORTAGES and DAMAGE

No claims will be accepted later than four (4) days from delivery

Delivery received by:

..... on

.....

Delivery made by:

..... on  
.....

Received from:

.....  
.....

the sum of (words):

.....  
.....

\$.....

Date:

.....

Signed on behalf of

distributor :

.....  
.....

**BMT Engineering P/L**

**From:** "Liz Dewis" <Liz@sidach.com.au>  
**To:** <bmteng@bigpond.net.au>  
**Sent:** Wednesday, 14 May 2008 1:06 PM  
**Subject:** uton 0524

**v-zsiduton****Invoice to:**

SHEDS R US (Tas) Pty Ltd  
 PO Box 474  
 4 Export Drive  
 Ulverstone, 7315  
 03 6425 3333, shedsrus@internode.on.net

**Order:** UTON0524**Customer name:** REECE HIGH SCHOOL**Address:** PO Box 1261 Site: Middle Road**Town:** DEVONPORT**Post code:** 7310**B.M.T ENGINEERING PTY LTD**

Part Code	Quantity	Length	Item	Colour	Description
BC100	4	0.000	BC100 Base Cleat		BASECLEAT
BC150	12	0.000	BC150 Base Cleat		BASECLEAT
MF 5	8	0.000	C150 Mullion Angle Connector		FIXINGANGLE
HB11LP	4	0.000	C150 11 deg L/H Knee Brkt Punched 1.9mm		KNEECONN
HB11RP	4	0.000	C150 11 deg R/H Knee Brkt Punched 1.9mm		KNEECONN
AP P	4	0.000	C150 11 deg Ridge Brkt Punched 1.9mm		RIDGECONN
EWG64	22	0.000	End Wall Girt Bracket - 50x50x100 edited by pc		EWGB
EPB61S	8	0.000	Single Eave Purlin Brkt C100 TH61100 C15019		EAVEPURLINBRACKET
AC50	2	0.000	50mm Angle Connector		ANGLECONN