

QUOTATION

Kyel Mitchell
4 E Parkham Rd
Elizabeth Town
TAS, 7304
Australia

Quote # : LTH2105006
Date : 07 May 2021
Distributor : Luke Thomson
Phone : 0437120410
Email : luke.thomson@shedsnhomes.com.au

Thank you for the opportunity to provide you with information for your proposed building. We have set out below the specifications and the information for your approval. This proposal is valid for 30 days and is subject to the site classification, we look forward to being of assistance to you.

BUILDING SPECIFICATIONS

Span	15 metres
Length	20 metres (5 Bays: 3.75 metres, 3.5 metres, 4.25 metres, 4.25 metres, 4.25 metres)
Height	6 metres
Roof Type	Gable, 10 degree pitch
Roof	COLORBOND® steel CORODEK® 0.42 BMT (0.47TCT) sheeting, BlueScope
Walls & Trim	COLORBOND® steel TRIMCLAD® 0.42 BMT (0.47TCT) sheeting, BlueScope
Weight	11,400

KIT PRICE

Steel Building Kit	\$55,918.18
GST	\$5,591.82
Total Kit Price	\$61,510.00

DELIVERY

From Launceston, TAS	\$0.00
----------------------	--------

TOTAL PRICE

Kit Price	\$61,510.00
Delivery	FREE*
Promotional Discount	\$1,850.00
Grand Total	\$59,660.00

Anything that has been discussed or implied that is not detailed in this quote or general specifications has not been allowed for in the quote price. If you require anything extra to the above, then please contact us and we will send you a revised quotation.

DELIVERY

*Free delivery offer applies to delivery fees for the standard delivery area. Any additional fees for delivery outside the standard area are not included in this promotion. Conditions apply, refer to your purchase agreement for more information.

PAYMENT SCHEDULE

- 25% initial deposit to be paid to receive all appropriate plans, engineering specifications & certificates.
- 25% further deposit to be paid to commence manufacturing.
- 50% to be paid 7 working days prior to pick up or delivery of your steel building.

BUILDING DETAILS

Span	15 metres
Length	20 metres (5 Bays: 3.75 metres, 3.5 metres, 4.25 metres, 4.25 metres, 4.25 metres)
Height	6 metres
Roof Style	Gable, 10 degree pitch
Roof Material	COLORBOND® steel CORODEK® 0.42 BMT (0.47TCT) sheeting, BlueScope
Wall Material	COLORBOND® steel TRIMCLAD® 0.42 BMT (0.47TCT) sheeting, BlueScope
Roller Doors	Two (2) COLORBOND® steel 2.83m high x 2.75m wide roller doors (with 2 motorised unit operated by remote handpieces, roller door is wind rated). One (1) COLORBOND® steel 4.2m high x 4.27m wide roller door supplied with a planetary gearing system (roller door is wind rated). One (1) COLORBOND® steel 3m high x 3m wide roller door (roller door is wind rated). Refer to the General Specification (# Access Doors) in relation to opening sizes. The Roller Doors are boxed or steel wrapped for protection during transport. Refer to the Building information for details on Industrial Door Handling.
Access Doors	One (1) 2040 x 820 COLORBOND® steel door. Single skin metal clad door with COLORBOND® steel facings and fold-down vertical sides for strength and appearance. On a welded RHS frame, the door is pre-hung into a powdercoated frame. Supplied with a Knob/Knob entrance set;
Insulation	Safety wire is provided to the roof of the main building (Insulation to be provided by others).
Bracing	The building will have Apex braces. Minimum internal apex clearance is: 6.361m.
Mezzanine	Two (2) bays, starting at bay One (1). Height under joist to be 3.3m, with a clearance under the bearer of 3m. Steel bearers and joists only. Bearers supported by Three (3) mid columns. Stairs, balustrading and timber flooring supplied by others. Allowable floor load is 3.0kPa uniformly distributed. (Suitable for a office for general use or General storage up to 1.2m high - No concentrated loads).
Roof Purlins & Wall Girts	Z sections bolted to rafters & columns with a minimum overlap of 10% of the bay width. The purlins and girts are Z100.
Fixing to Concrete	Screw-Bolts fitted after concrete is cured.
Weight	Approximately: 11,400 kg

ADDITIONAL ITEMS QUOTED - INCLUDED IN TOTAL PRICE ABOVE

5 x Rolls 456 Heavy Duty Sisal to cover roof area.	\$850.00
Total Cost of Additional Items	\$850.00

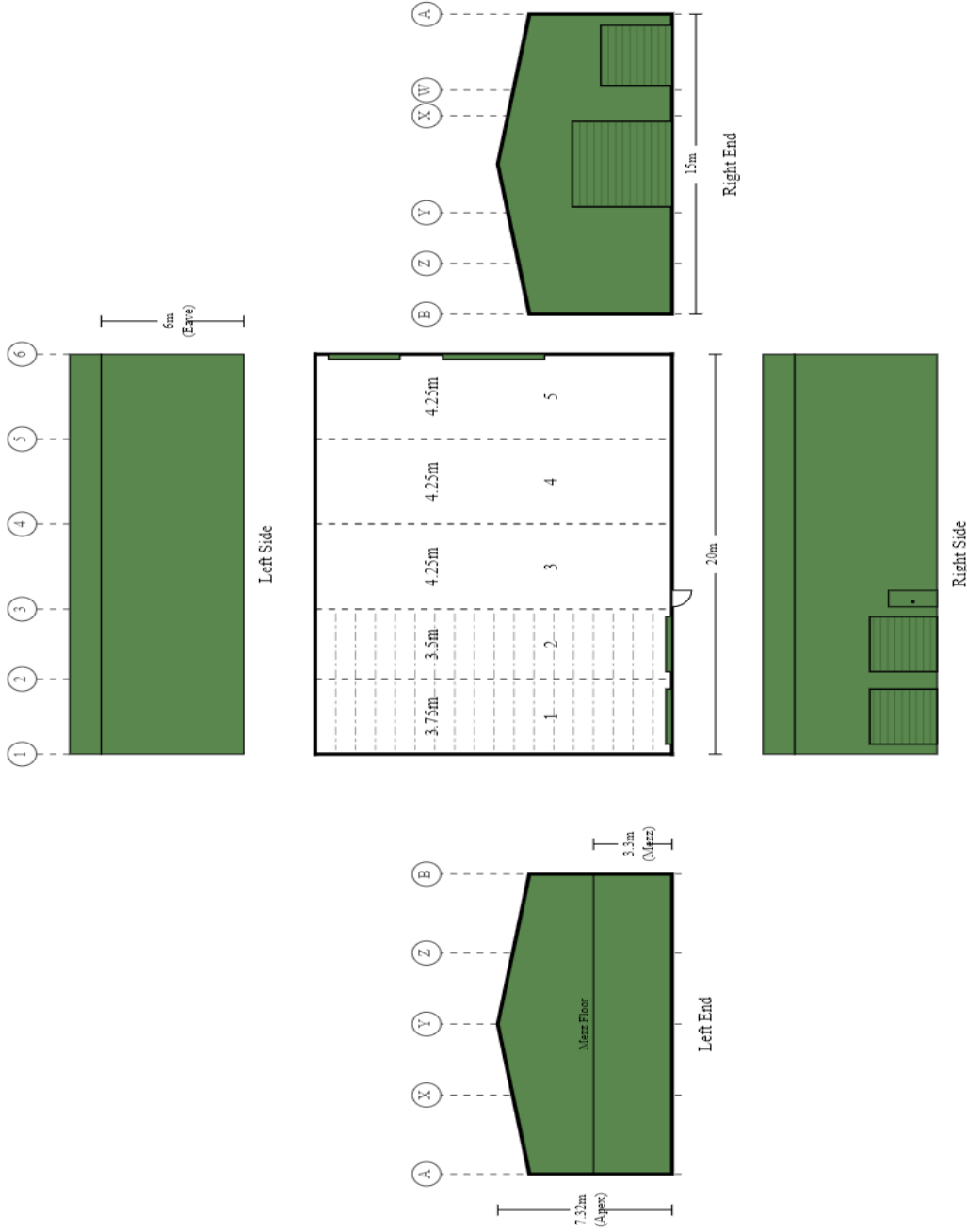
SPECIFIC INCLUSIONS OF STEEL BUILDING

- Determination of the design criteria by the engineer. This includes assessment in 8 cardinal directions to determine the site design wind speed based on the building orientation.
- A comprehensive step by step Construction Kit. This kit is specific to your building and gives step by step, simple to follow instructions on how to build your building.
- Engineering certification of the steel building to the appropriate Australian Standards.
- Slab or Pier designs for soil classes A, S, M, H1 and H2.
- Materials as nominated above supplied as per the attached "General Specification".
- BlueScope - product warranties of up to 15 years apply.

SPECIFIC EXCLUSIONS

- Drawings other than detailed above.
- Consent authority including any building, development or construction certificate application(s).
- Construction of the steel building and any foundations (building is supplied as a kit).
- Insurance of the steel building once delivered to site or collected from depot.





Purchaser Name: Kyril Mitchell

Site Address:

Ref # LTH2105006

Print Date: 07/05/21

Building Layout

Ref# LTH2105006

Seller: Sheds n Homes Launceston
 Name: Luke Thomson
 Phone: 0437120410
 Fax:
 Email: luke.thomson@shedsnhomes.com.au



SITE LOCATION

Site Address	4 E Parkham Rd Elizabeth Town TAS 7304 Australia
Building Orientation	Left Side of building orientated to 349° (northerly direction)
Building Class	10
Design Wind Criteria	Region A3; TC = 2.0; Mt = 1.01; Ms = 1.0; giving a Vdes of 42.7 m/s.
Importance Level	2 with a Vr of 45 m/s
Terrain Category	2.0
Other Design Factors	No Snow Loading allowed. No Earthquake Loading allowed.



BUILDING INFORMATION

The design criteria nominated has been assessed by your trained sales consultant. This assessment is subject to the certifying engineers confirmation. Final assessment by the engineer may result in a change to the materials and price.

From the site location and the usage information we have at hand, it is likely that the building is subject to a Marine Influence and/or Industrial Influence. We refer you to BlueScope Technical Bulletins (in particular TB1A, TB1B, TB4, TB30 and TB35) to consider the environmental conditions and the materials that have been specified in your quotation. It is likely that the BlueScope and any other warranties will be limited for the specified materials. If you contact BlueScope on 1800 800 789, they will be able to discuss this further with you. Should you wish to consider changing any materials, your sales consultant will be able to assist.



www.shedshomes.com.au

GENERAL SPECIFICATIONS

Due to ongoing product development, the seller reserves the right to make design and engineering changes up to the point of commencing manufacture. The engineer's final design requirements may override anything nominated.

Standards & Codes - All buildings are designed in accordance with test results, computer analysis, NCC, AS/NZS 1170, AS 3600, AS 4100 and AS 4600.

Design Criteria - Prior to issuing engineering certification, the engineer does a site specific check of the wind speed and a structural design check. This design takes into account the building orientation. Changes to the site wind speed may result in a price increase or decrease. Unless nominated, no allowance has been made for earthquake or snow loading. The building is not suitable for lining with gyprock.

Dimensions - all dimensions nominated are nominal sizes only Length and span are to inside of sheeting. Height is to top of gutter. Length and span may vary when sides are fully open by up to 200mm per side/end. If an exact opening or clearance is required, then this must be specifically nominated as "exact size" in the quotation.

Environmental Characteristics - All components of the steel building are designed to suit the conditions generally described as Non aggressive. Care must be taken with any steel building to ensure that regular maintenance is carried out. The suitable conditions and Maintenance requirements are defined in the various BlueScope Technical Bulletins.

Roof & Wall Sheeting - COLORBOND® steel or ZINCALUME® steel as nominated. TCT refers to Total Coated Thickness. BMT refers to Base Metal Thickness. Refer to BlueScope TB-1a&1b

GALVSPAN® steel Sections - GALVSPAN® steel C-sections, Z-sections, purlins and girts have a minimum coating of 350-gm/m² (Z350) and a minimum yield strength of 450Mpa. Refer to BlueScope TB-17

Fasteners - All major connections including Z purlins and girts are bolted. All other connections are tec screwed. Roof screws with cyclonic washers are ONLY provided where the building is rated cyclonic. Should conditions be severe (ISO Category 4 or 5), the purchaser should advise the seller of any special requirements. (Refer to BlueScope TB-16 and manufacturers warranty data.)

Bracing

Wall & Roof : Cross and Fly bracing as per the engineering plans, steel strapping will be supplied unless otherwise nominated. In open bays, a double eave purlin is provided for bracing purposes. Subject to engineering cross bracing in some open bays and over windows may be required.

Apex: Where nominated by the engineering, apex braces are supplied. Apex braces will reduce the apex clearance height. rafters.

Knee Braces: Where nominated by the engineering, lateral and/or transverse knee braces are provided. Knee braces will reduce the clearance heights.

End Wall Mullions - Fixed at 90 degrees to the columns and inside the rafter. These will reduce internal clearance.

Gutters - The gutter type supplied will be nominated by our supplier as the most common type for the area.

Piers and Slab - Designs are for a safe bearing value $\geq 100\text{kPa}$. (400kPa ultimate). Where a concrete slab, or concrete slab and piers is nominated, the wall sheeting will be supplied to extend 35 mm past the slab (building height + 35 mm). When concrete piers only are nominated, wall sheeting is provided to building height. Where a 50mm step down is nominated, the wall sheeting is not extended any further.

Fixing Method - The fixing method nominated is for the main side columns. Other columns are supplied as per engineering design. Where chemical studs are nominated, due to hazardous transport laws, the chemical is to be supplied by others. The Engineers design may override your request.

Marking, Cutting and Drilling - Most components are marked for easy identification and placement. Most are also cut to length and drilled to suit bolt placement. It will be necessary to cut and/or drill some components on site.

symbol indicates items that are only included when specifically nominated in your quotation.

Access Doors - All roller doors, sectional doors, shutters, steel sliding or bifold doors and PA doors are NOT wind rated. Roller doors can be supplied wind rated at an additional cost. The sizes quoted are approximate door sizes - NOT clear opening sizes. Clear opening sizes may be reduced due to the building height, widths, motors or chains. At least 70mm in height will be lost due to the 'lead in'. All roller door keys (where included) are keyed alike, unless otherwise stated. All Stable shutters will be provided in the same colour as the wall colour. Sliding doors are supplied so that each door will slide across the door bay plus one other bay as per shed layout.

All comments regarding roller doors, sectional doors & shutters are based from inside the building looking out.

Colours - Not all colours are available from all manufacturing depots. 0.40 TCT wall sheeting has limited colours in most areas.

Delivery - Delivery is quoted to within the normal delivery runs. Additional fees apply where the address is off the run. Alternatively delivery is to be ex works. Unloading of the whole kit is not included where any length exceeds 11.8m. Semi trailer access required. Where a body truck is requested it is subject to availability. Should a body truck be requested and it is not available for the site then the building shall be either ex works or delivered to an alternative address by a semi trailer.

Downpipes - 100 x 75 or 90 dia PVC as provided by our supplier.

Ex Works - Collection will be from our supplier's depot nominated as the manufacturing location in the quote letter.

Insulation + Wire - Of the type nominated in the quote.

Internal Stud Walls - No sheeting provided.

Mezzanine Floors - Supply is for bearers and joists only. Flooring, stairs and balustrading are not supplied. Joist spacing a maximum of 600mm. Support posts fitted under bearers in line with End Wall Mullion positions.

Pricing - Pricing is valid for 30 days, unless notified of an impending price rise where the price rise date will become the new validation date.

Roller Door Transport Protection - All doors are either steel wrapped or cardboard boxed to protect them during transport. Any damage to a door will be accessed in accordance with the AGDA guide to visual inspection of garage doors.

Sectional Door Transport Protection - All doors are either cardboard boxed to protect them during transport. Any damage to a door will be accessed in accordance with the AGDA guide to visual inspection of garage doors.



FEATURES & BENEFITS

Understand your Sheds n Homes steel building

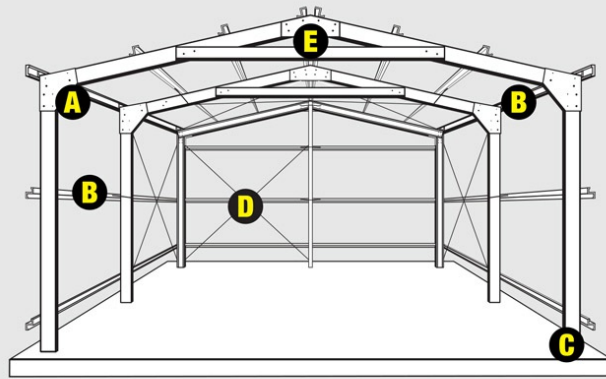
BEFORE YOU BUY A SHED

There are 6 essential questions you should ask potential steel building suppliers

- 1 Do they supply a fully bolted portal frame shed across their entire range?
- 2 Are their brackets manufactured from high tensile 450+ MPa Steel?
- 3 Steel manufacturers require 100mm +10% overlap on purlins and girts.
- 4 Has your building been designed for site specific engineering?
- 5 Are you provided with a comprehensive job specific construction kit?
- 6 Are all major components marked for easy identification and erection?

WHY SHEDS N HOMES?

- + Flexible design parameters
- + Multiple layout combinations
- + Heights up to 12 metres*
- + Clear span up to 30 metres*
- + Lengths in excess of 200 metres
- + Ability to alter span, width and height to suit your planned use and storage requirements
- + Combinations of open and enclosed shed configurations
- + Uneven bay widths
- + Various roof pitches available
- + Commercial-sized metal sliding doors
- + Lean-tos to extend the covered space
- + Converter beam options for larger bay openings
- + Both ZINCALUME® and COLORBOND® steel options available
- + Roller doors in varying sizes
- + Range of optional extras to deliver value
- + Capacity for cyclone rating, snow and earthquake loading
- + Designed to the latest engineering standards
- + Speed of design and delivery
- + Buildings designed specifically to suit your needs
- + Individual customised construction kit on all jobs
- + All materials marked for easy identification
- + 24/7 online facility to download documents, plans, construction and track the progress of your building.



A HAUNCH BRACKET

- + Designed to strengthen the rafter-over-column haunch joint and prevent axial torque (twisting)
- + In larger buildings knee braces are provided to strengthen the haunch connection

B PURLINS AND GIRTS

- + 450+ MPa BlueScope Steel
- + Option of top hat or fully bolted Z purlins and girts
- + Overlaps are 10% of the bay width PLUS an extra 100mm
- + Larger overlaps add significant strength

C FOOTING FIXING

- + A number of fixing methods are available

D BRACING

- + Cross bracing and fly bracing

E APEX SYSTEM

- + Apex bracket to full depth of the rafter 'C' sections with full width return flanges for strength
- + Apex brace (collar tie in tension) is vital in the construction process and aids greatly in maintaining structural integrity in high winds

Galvaspan® Zinalume® Colorbond®



FREECALL: 1800 764 764 www.shedsnhomes.com.au

SHEDS n HOMES



www.shedsnhomes.com.au



FEATURES & BENEFITS

Understand your Sheds n Homes steel building

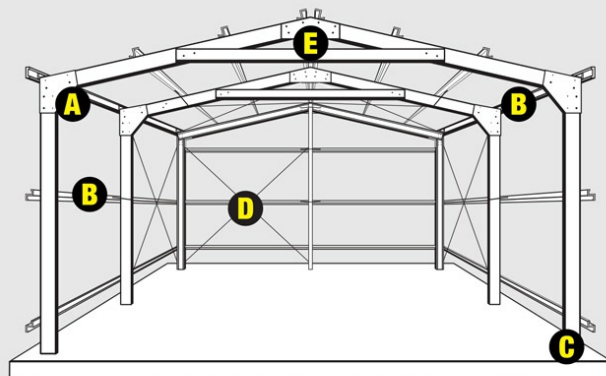
BEFORE YOU BUY A SHED

There are 6 essential questions you should ask potential steel building suppliers

- 1 Do they supply a fully bolted portal frame shed across their entire range?
- 2 Are their brackets manufactured from high tensile 450+ MPa Steel?
- 3 Steel manufacturers require 100mm +10% overlap on purlins and girts.
- 4 Has your building been designed for site specific engineering?
- 5 Are you provided with a comprehensive job specific construction kit?
- 6 Are all major components marked for easy identification and erection?

WHY SHEDS N HOMES?

- + Flexible design parameters
- + Multiple layout combinations
- + Heights up to 12 metres*
- + Clear span up to 30 metres*
- + Lengths in excess of 200 metres
- + Ability to alter span, width and height to suit your planned use and storage requirements
- + Combinations of open and enclosed shed configurations
- + Uneven bay widths
- + Various roof pitches available
- + Commercial-sized metal sliding doors
- + Lean-tos to extend the covered space
- + Converter beam options for larger bay openings
- + Both ZINCALUME® and COLORBOND® steel options available
- + Roller doors in varying sizes
- + Range of optional extras to deliver value
- + Capacity for cyclone rating, snow and earthquake loading
- + Designed to the latest engineering standards
- + Speed of design and delivery
- + Buildings designed specifically to suit your needs
- + Individual customised construction kit on all jobs
- + All materials marked for easy identification
- + 24/7 online facility to download documents, plans, construction and track the progress of your building.



A HAUNCH BRACKET

- + Designed to strengthen the rafter-over-column haunch joint and prevent axial torque (twisting)
- + In larger buildings knee braces are provided to strengthen the haunch connection

B PURLINS AND GIRTS

- + 450+ MPa BlueScope Steel
- + Option of top hat or fully bolted Z purlins and girts
- + Overlaps are 10% of the bay width PLUS an extra 100mm
- + Larger overlaps add significant strength

C FOOTING FIXING

- + A number of fixing methods are available

D BRACING

- + Cross bracing and fly bracing

E APEX SYSTEM

- + Apex bracket to full depth of the rafter 'C' sections with full width return flanges for strength
- + Apex brace (collar tie in tension) is vital in the construction process and aids greatly in maintaining structural integrity in high winds

Galvaspan® Zinalume® Colorbond®



FREECALL: 1800 764 764 www.shedsnhomes.com.au

**SHEDS
n
HOMES**



BUYER PROTECTION

These are our guarantees to you



NO QUESTIONS ASKED GUARANTEE

Sheds n Homes guarantees that your steel kit building will be supplied in full and undamaged. Careful cross-checking is in place to ensure this happens first time. However, in the event that there are any missing or damaged components, we will arrange for these to be replaced at the first available opportunity.

For more information, visit:

www.shedsnhomes.com.au/no-questions-asked-guarantee



GUARANTEE OF SUPPLY

By making all payments directly to the account of Sheds n Homes Australia in accordance with the invoices issued, Sheds n Homes Australia guarantees that you will receive the kit building, as ordered by you through your Sheds n Homes Distributor, as described in your purchase agreement. This guarantee has been developed to provide our customers with the confidence of dealing with a brand that has national strength and financial security - whilst still buying locally.

For full terms and conditions, visit the Sheds n Homes website:

www.shedsnhomes.com.au/guarantee-of-supply



BLUESCOPE STEEL GUARANTEE

Sheds n Homes guarantees that your steel kit building will be manufactured in Australia and that all structural components supplied will be made entirely from premium hi-tensile Australian 450MPa or greater, BlueScope Steel.

For more information, visit:

www.shedsnhomes.com.au/steel-guarantee



SITE SPECIFIC ENGINEERING

Once your local Sheds n Homes store has created your building design, it is then certified and cross-checked by a specialist team at head office. This ensures that all factors have been correctly identified to ensure that in the event of a serious weather event, your structure will withstand the forces of a design event.

For more information, visit:

www.shedsnhomes.com.au/site-specific-engineering



SHEDSAFE ACCREDITED

ShedSafe is a new industry benchmark for Australian manufactured steel sheds. It is an independent accreditation program designed to assist shed buyers in making an informed purchase decision. ShedSafe accreditation means that both the shed manufacturer and seller are committed to ensuring sheds meet Australian Standards and are the best fit for your site and circumstance.

For more information, visit:

www.shedsnhomes.com.au/shedsafe

FREECALL: 1800 764 764 www.shedsnhomes.com.au

**SHEDS
n
HOMES**



SHEDS. MADE. TOUGH.

Download the App today:



STEP 1: DOWNLOAD

Download our app from either the Google Play store if you are using android or the App Store if you are using IOS.



STEP 2: SCANNING QR CODE

Launch the app and by using the QR Scanner, scan the QR code found at the top left of this page.



STEP 3: LAUNCH 3D MODEL

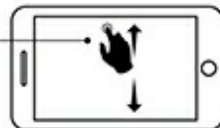
After scanning your QR code, point your device at this page and your building will appear in 3D.



STEP 4: MANEUVERING MODEL

ROTATE

Use your finger to rotate the building either up or down, left or right



ZOOM IN & OUT

Bring your thumb and first finger close together to zoom in. Expand them to zoom out

STEP 5: APPLYING COLOURS



COLOURS

Click button to reveal the components menu. Choose your component and then click the colours bar to change the colours as you go

Change and apply your colour selections to the building and your quote in real-time.

STEP 6: USEFUL TIPS

MENU

Tap to reveal menu for useful information



PHONE

Tap phone icon to speak directly with one of our shed experts

DOWNLOADS

Tap menu icon to reveal access to the 'Download' options

