

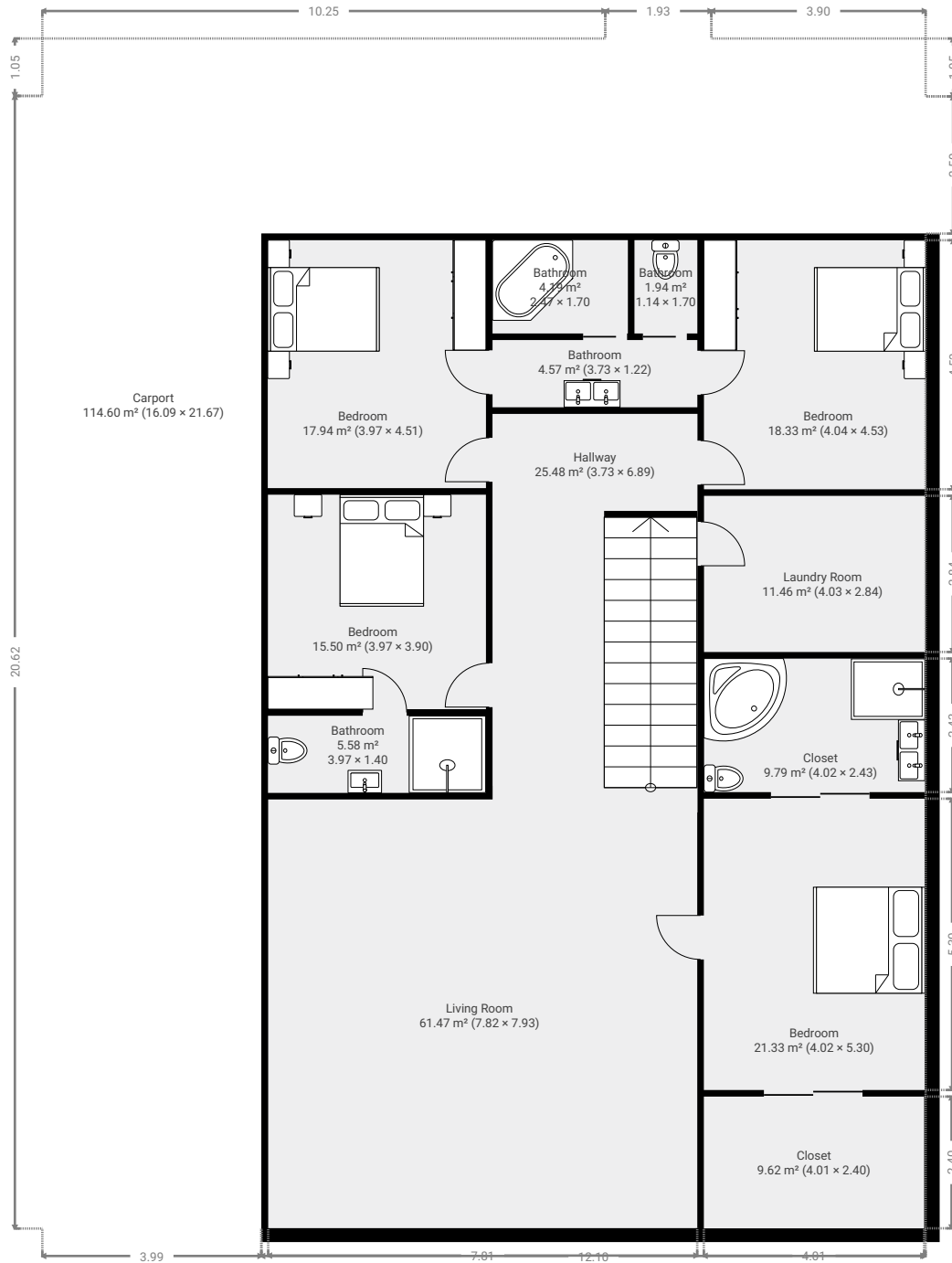
House builds

TOTAL AREA: 905.22 m² • LIVING AREA: 523.33 m² • FLOORS: 3 • ROOMS: 27



▼ Higher Ground Floor

TOTAL AREA: 321.68 m² • LIVING AREA: 207.10 m² • ROOMS: 13



THIS FLOOR PLAN IS PROVIDED WITHOUT WARRANTY OF ANY KIND. SENSOPIA DISCLAIMS ANY WARRANTY INCLUDING, WITHOUT LIMITATION, SATISFACTORY QUALITY OR ACCURACY OF DIMENSIONS.

0 2 4 6m 1:126

Page 2/3

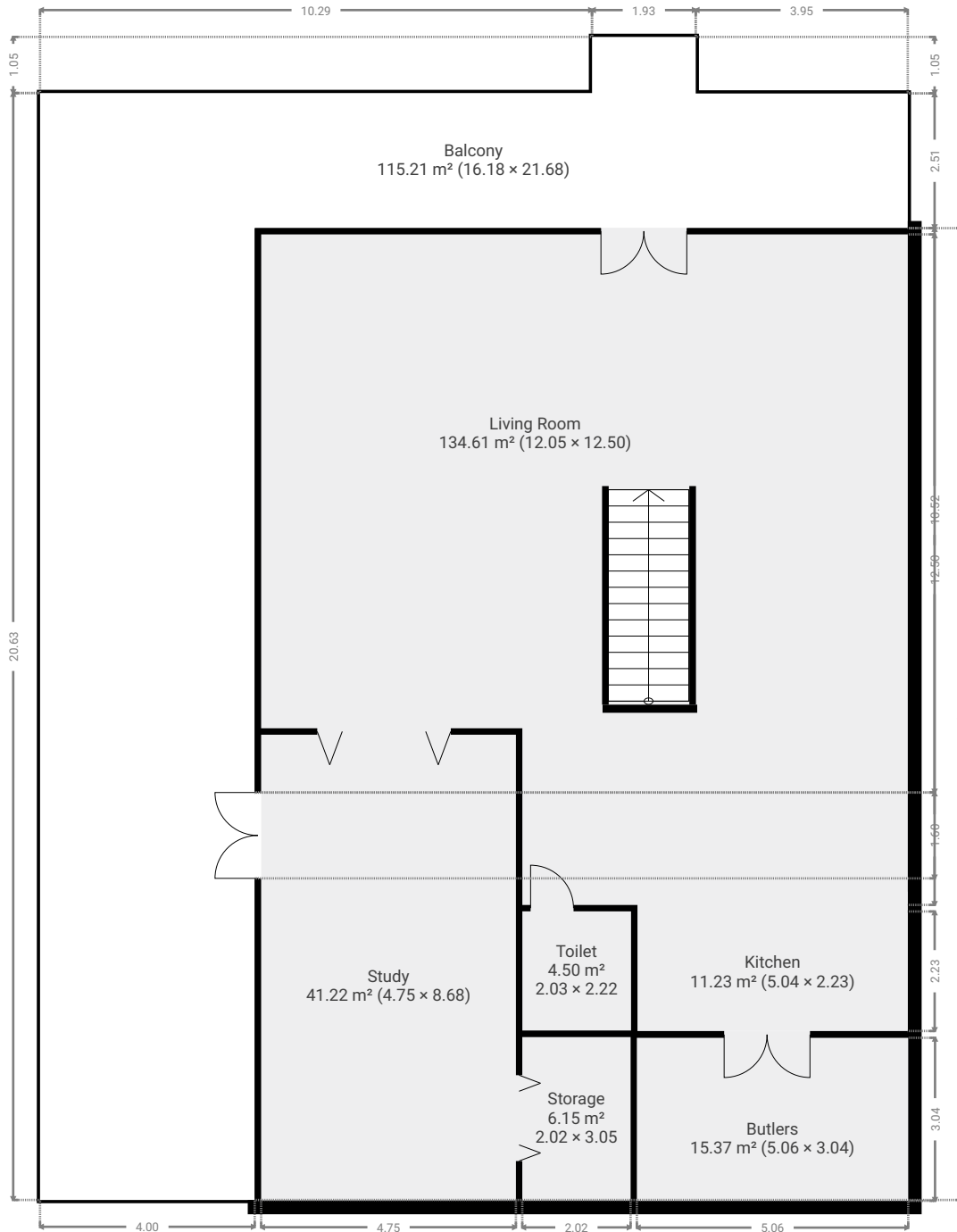
House builds

TOTAL AREA: 905.22 m² • LIVING AREA: 523.33 m² • FLOORS: 3 • ROOMS: 27



▼ 1st Floor

TOTAL AREA: 328.21 m² • LIVING AREA: 213.00 m² • ROOMS: 6



THIS FLOOR PLAN IS PROVIDED WITHOUT WARRANTY OF ANY KIND. SENSOPIA DISCLAIMS ANY WARRANTY INCLUDING, WITHOUT LIMITATION, SATISFACTORY QUALITY OR ACCURACY OF DIMENSIONS.

0 2 4 6m 1:126

Page 3/3