

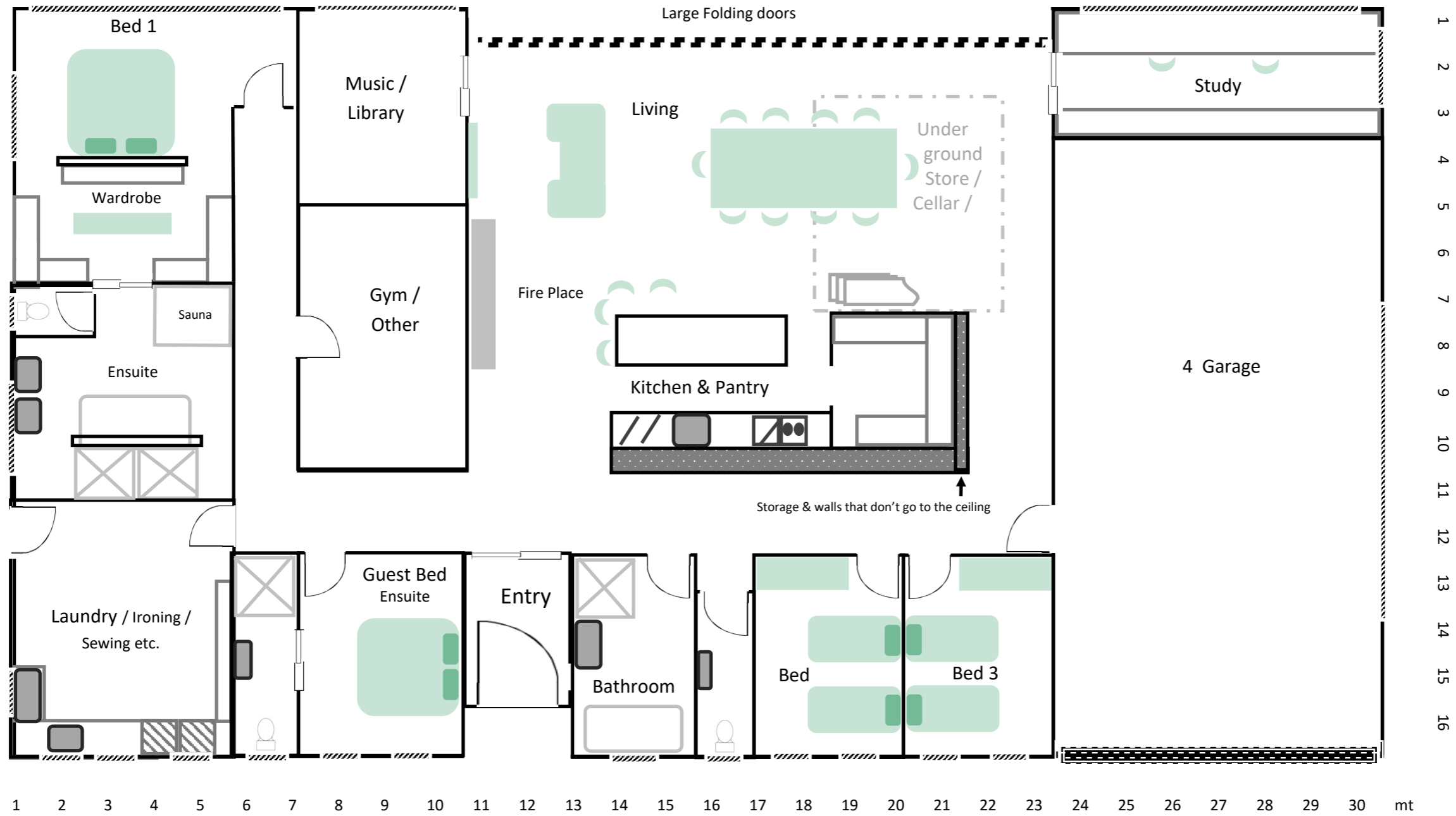
Main aim, wishes and ideas of the house design:

- Space and loads of natural light, especially in the living area.
- Fire place—Energy Efficient Masonry Fireplace - Happy to source the building of the fire place externally.
- Large bath in ensuite
- One gutter for the roof line?
- We have an interest to use S.I.P panelling due to the insulation, cost effectiveness, no large frame work needed and fire retardant properties.
- Solar based energy - with battery & grid feed in properties? Solar panels on the visitor par port & shed roof?
- Utilise rainwater for most areas. Mains will be connected more so for fire fighting sprinklers and back up water use.
- Rainwater storage under house? As fencing?
- Possible cellar - thinking outside the square of cost efficient ideas such as large concrete rainwater tank?
- Have the internal wall of the kitchen not go to the roof to allow for air flow from the fire to warm the house.
- Using options and ideas—thinking out side the square to the building of this house to keep costs down btu the finished product clean and current.
- 11 Deg roof angle to match the existing shed roof line.
- Large folding / sliding doors in the living area that lead out to a decking area which will over look the paddock and River Torrens bank.
- Not clad the side of the garage area with the house walling, simply seal it with what ever the outside of the house is finished with in a bid to save cost.
- Open to ideas of how to clad / finish the house ie: matte colour bond
- Big entrance door
- Roller door on garage
- Have the roof line give a veranda around the house include a larger veranda over the back decking area. Aluminium in finish not painted.
- Low maintenance on this house is the key.
- The land that the house is set to be on is on a slight slope going down toward the back of the house.
- Have a natural finish feel that sits with in the surrounding of the environment. / river side
- Have uniformed windows on the front & back side of the house to make an appealing look of the house ie: toilet windows the same as the bedroom windows but frosted?
- Current colours of established construction are a Colourbond green shed and cream fencing.
- Minimum 2.7mt ceilings in lower part of the roof pitch house.
- Sauna noted on the plan is already purchased.

Rough mud map of house design

A

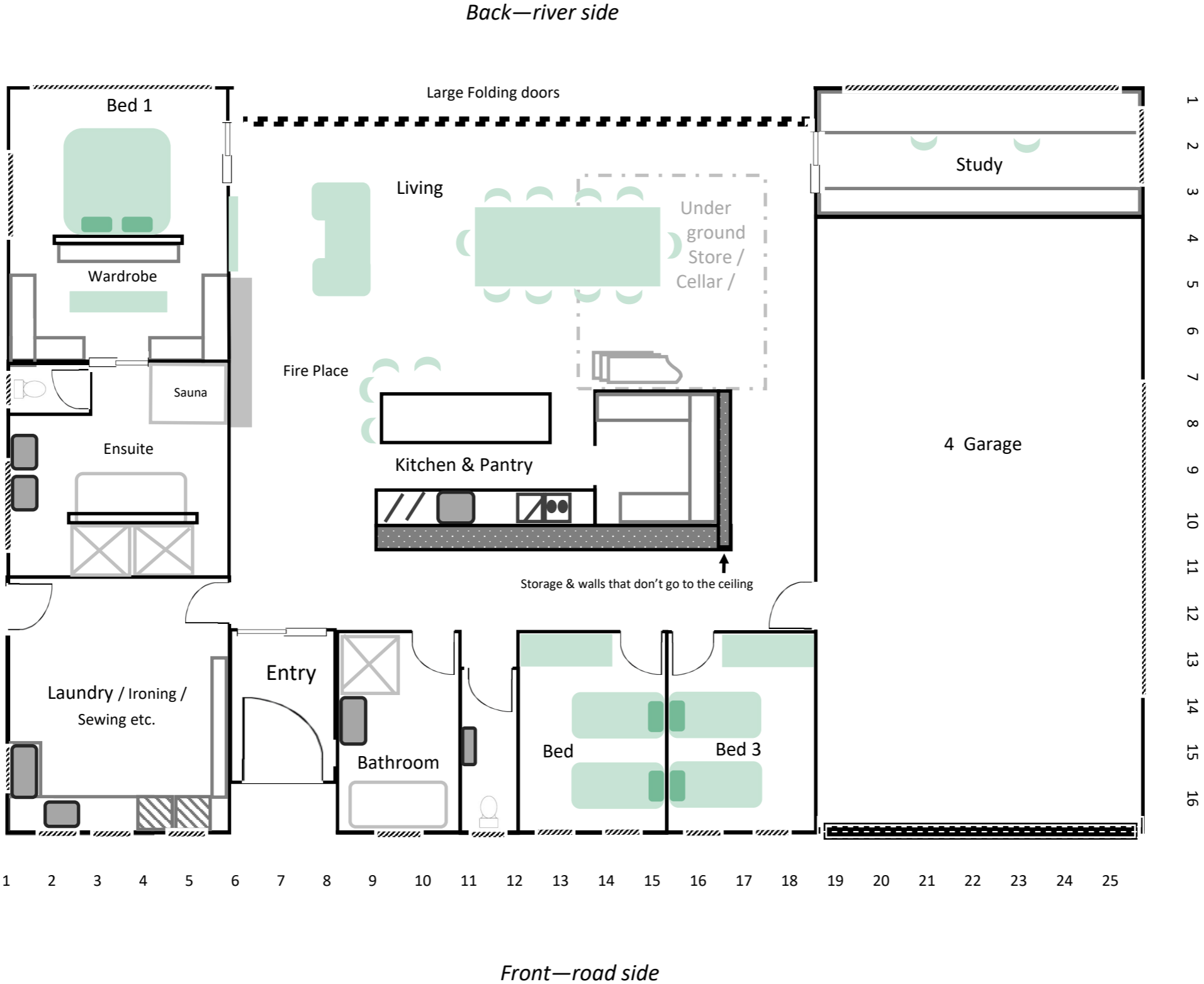
Back—river side



Front—road side

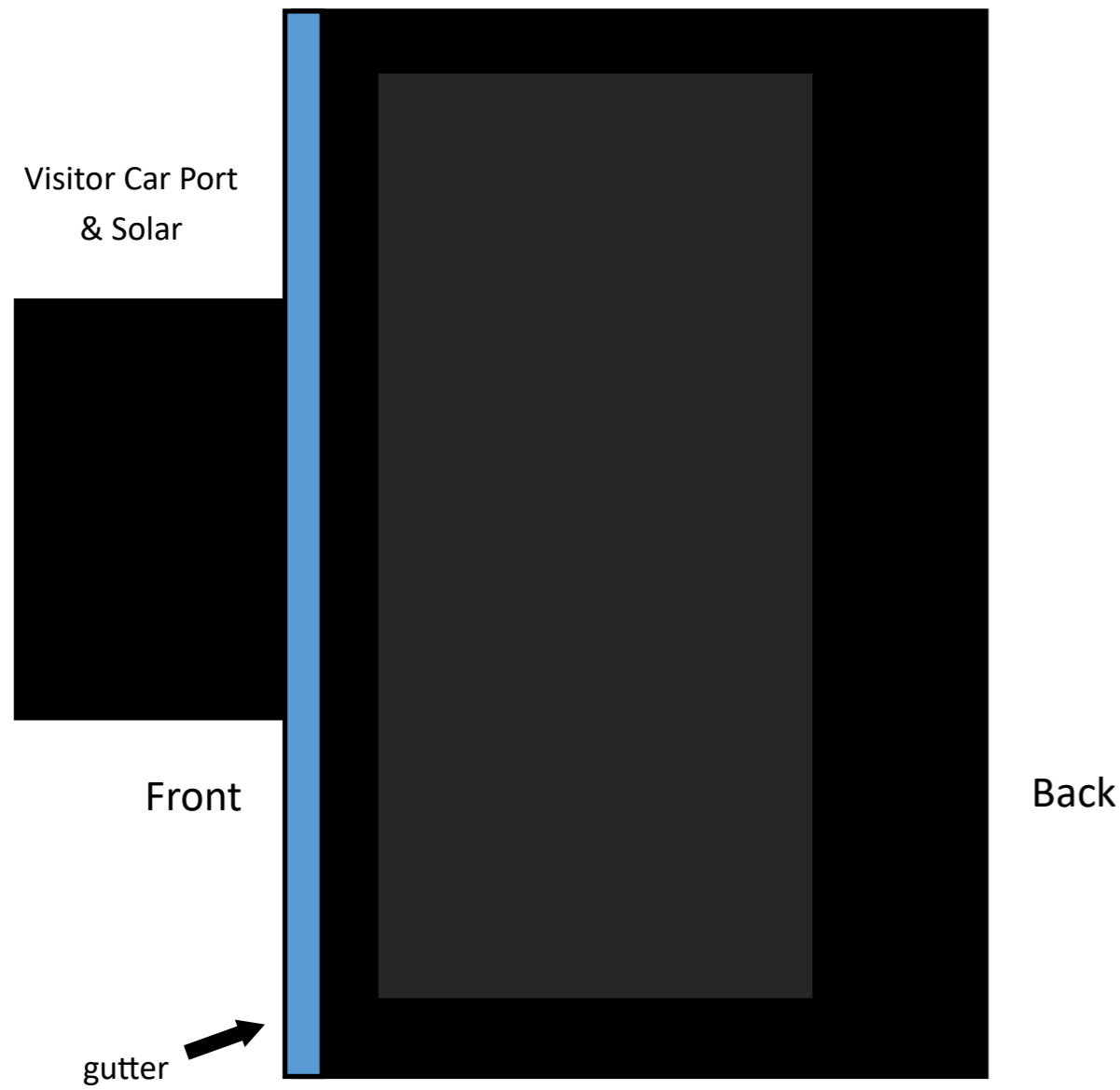
Rough mud map of house design

B

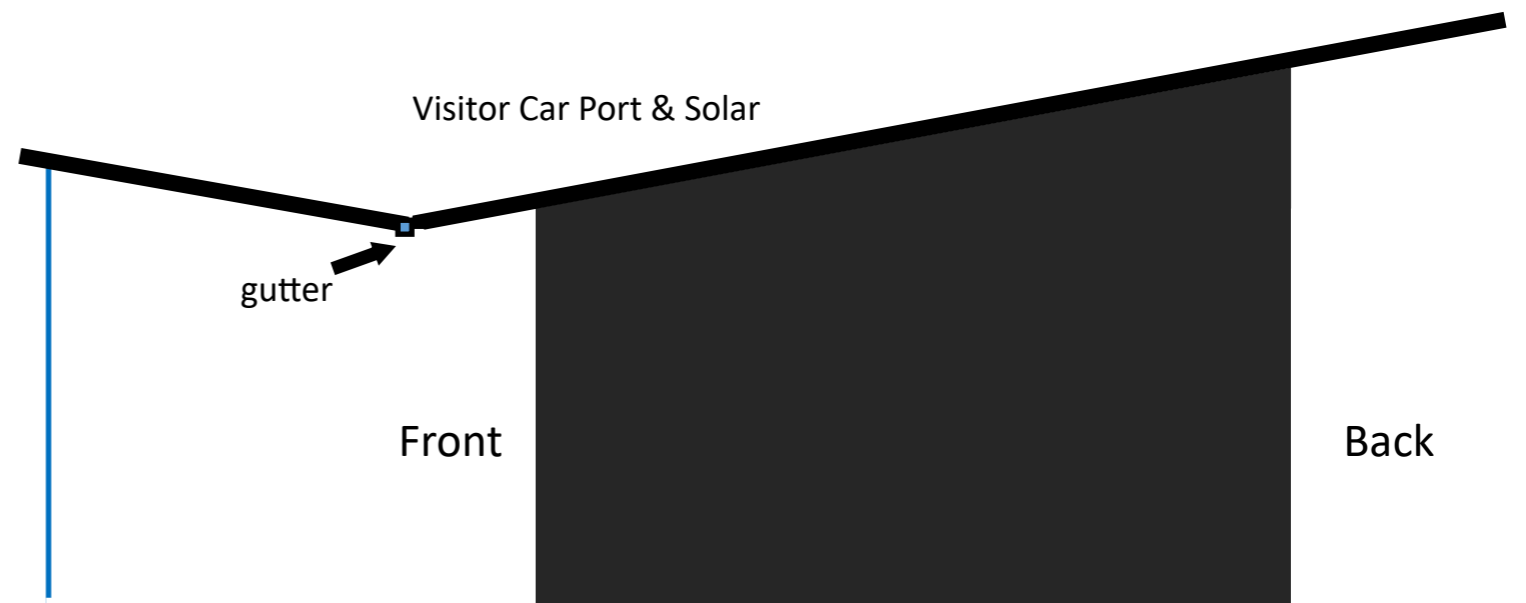


Option 1

Roof line - Main house top view with verandah

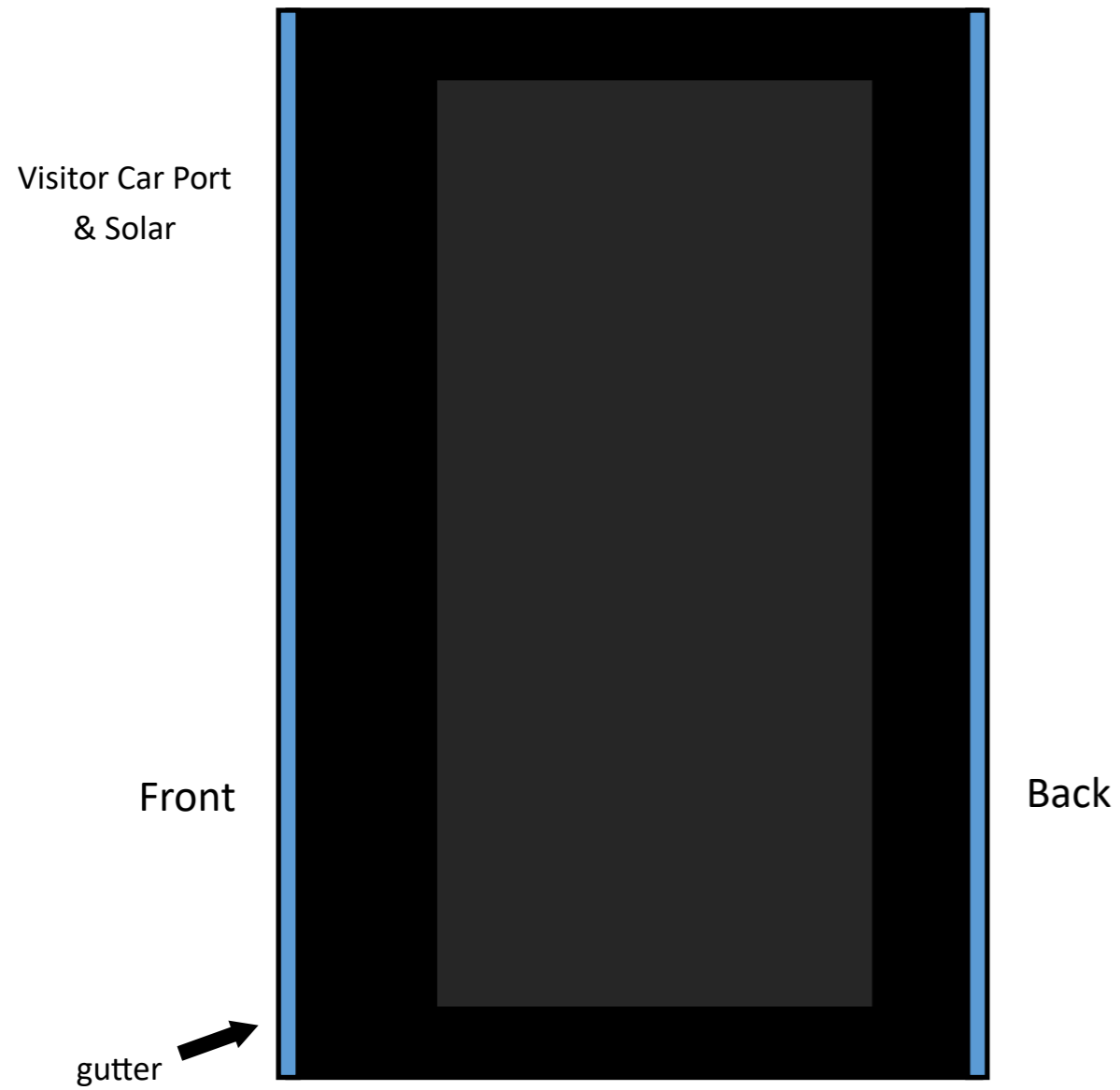


Main house side view with veranda

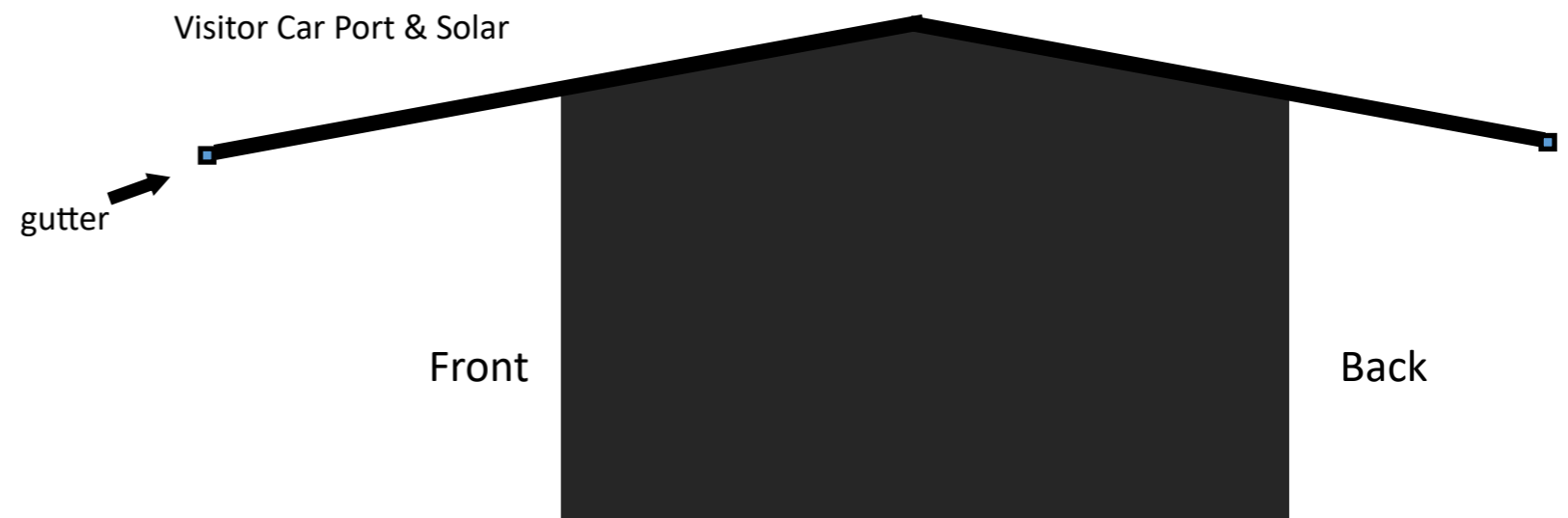


Option 2

Roof line - Main house top view with veranda



Main house side view with veranda



Rough mud map of council flood line. Blue zones are the flood lines. Never seen before in 3 generations of Loechels.



Rough mud map of block subdivision with a rough town boundary line which is not accurate in red. Blue zones are the flood lines

