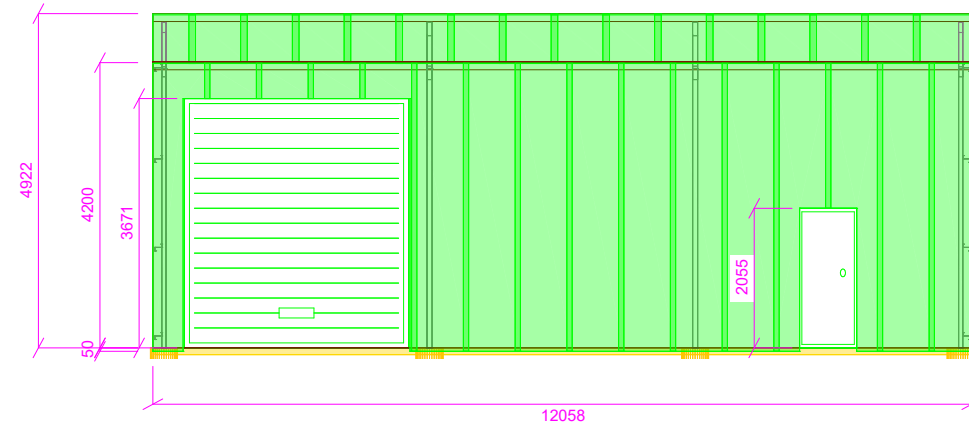
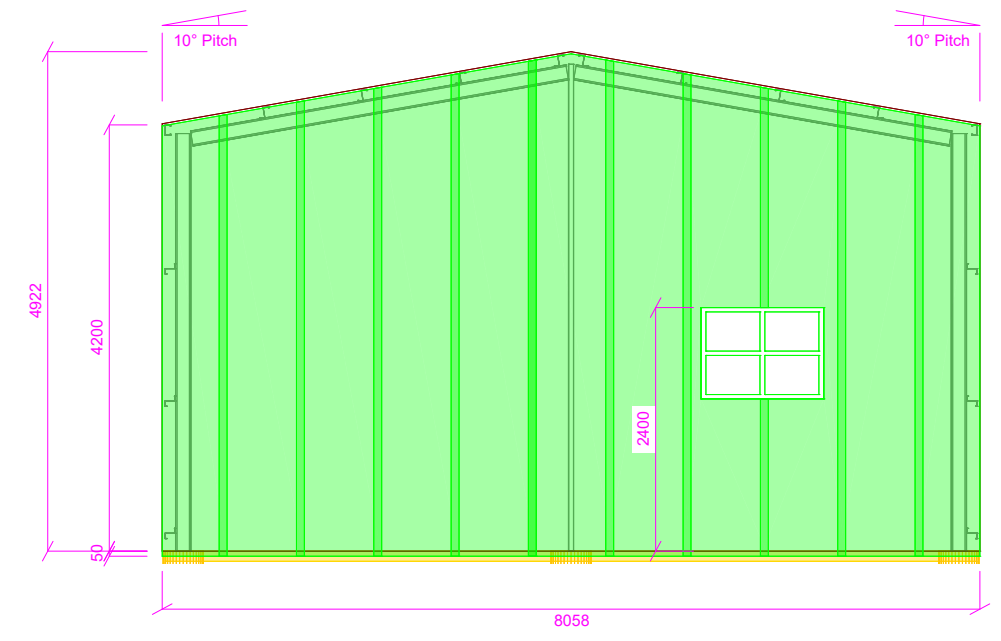


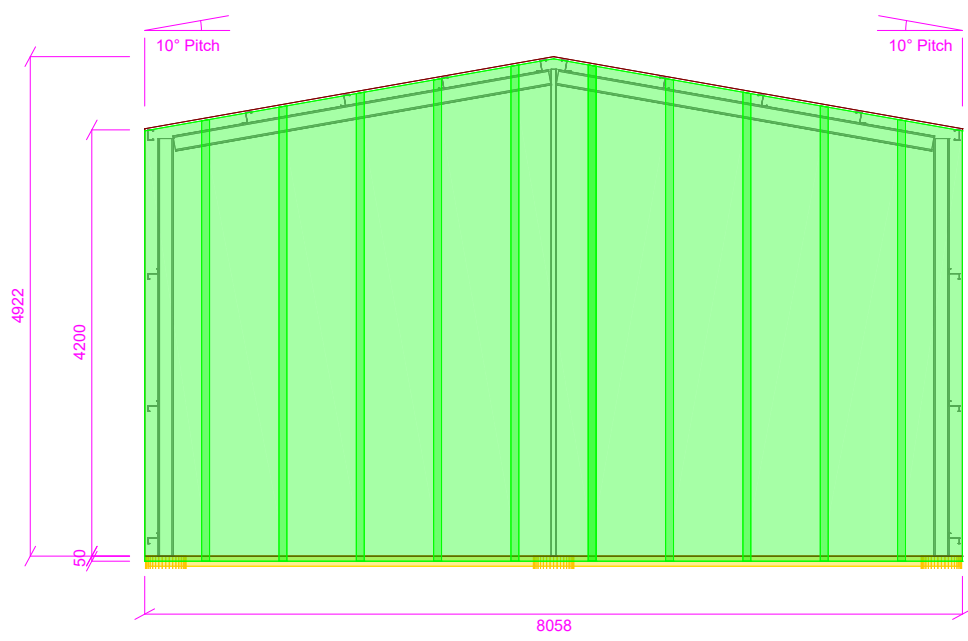
FRONT VIEW



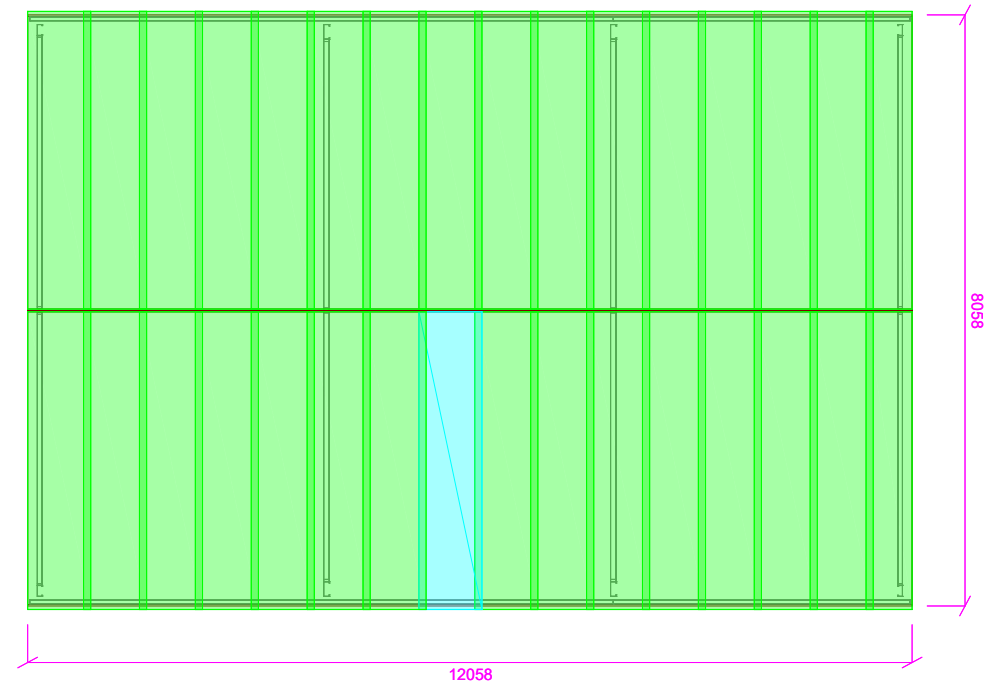
BACK VIEW



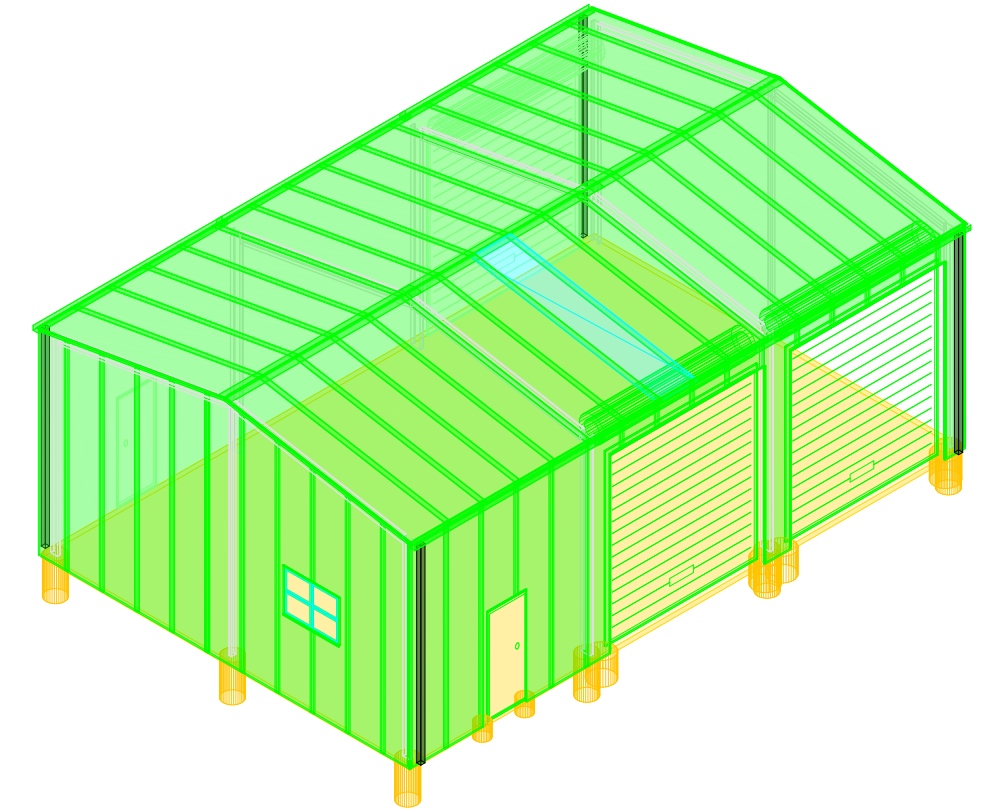
LEFT VIEW



RIGHT VIEW



PLAN VIEW

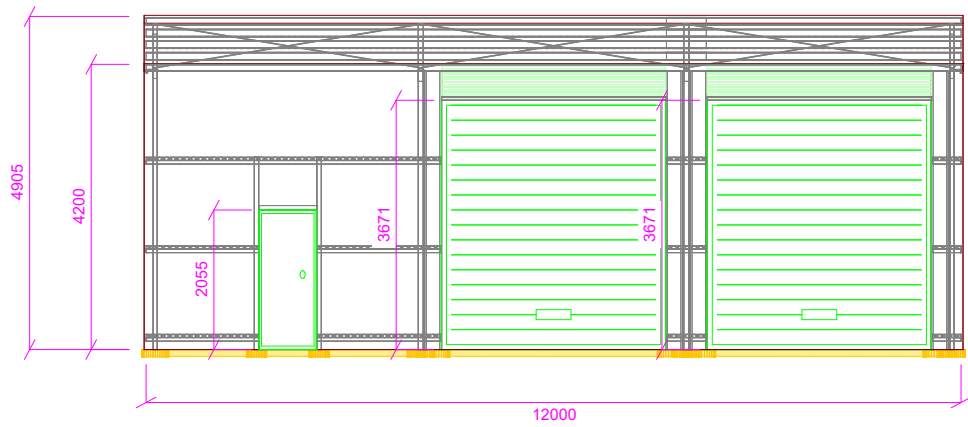


ISO FRONT LEFT VIEW

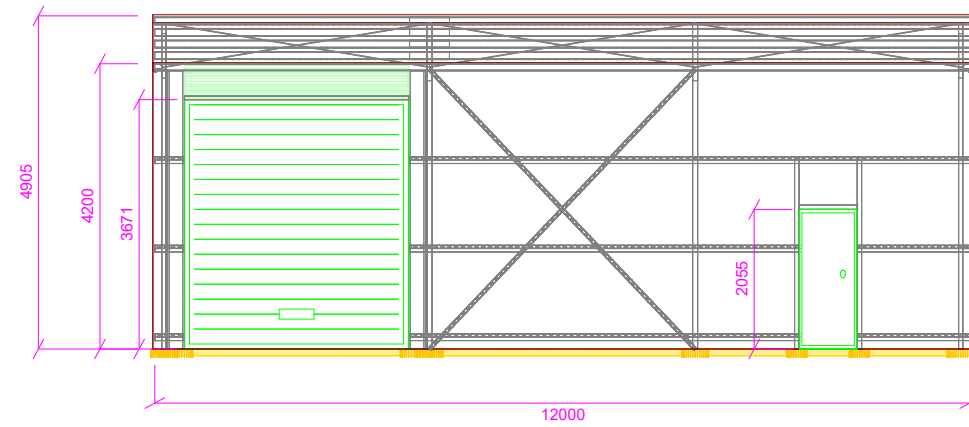
Elevation Multiview



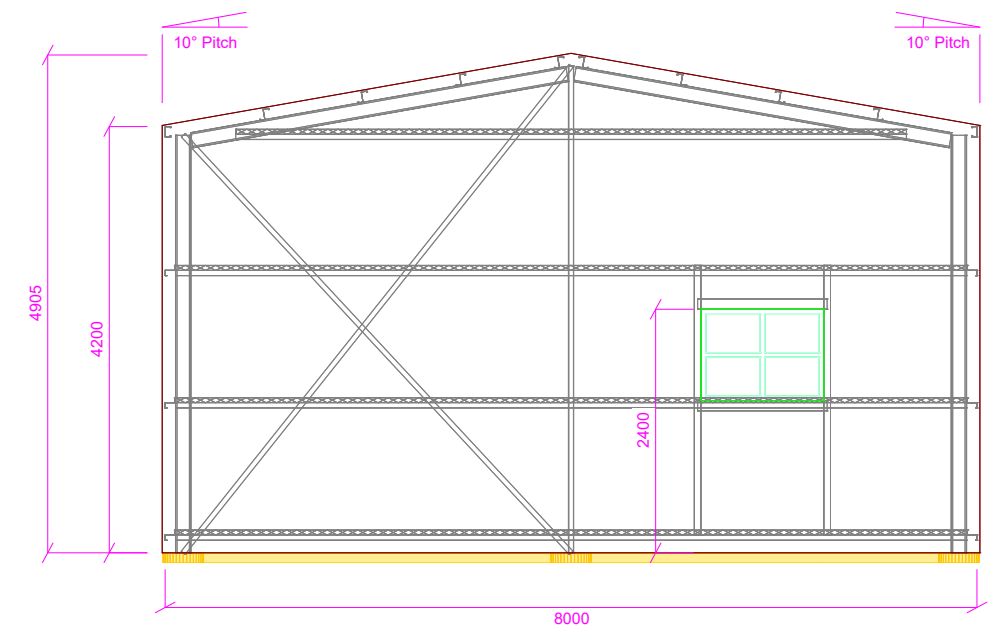
Signed:	Drawing Number: 1 of 6
	Project No: AMMSG02_256123
	Revision: 1 - 10 Jun 2021
	26 Bell Ct
	Teesdale, VIC 3328
	Scale: N/A



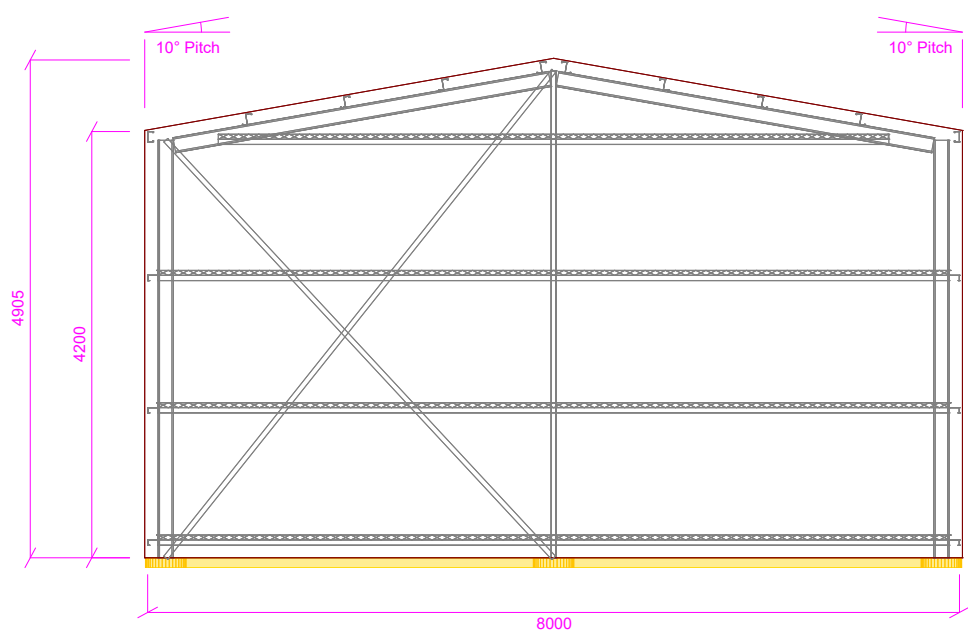
FRONT VIEW



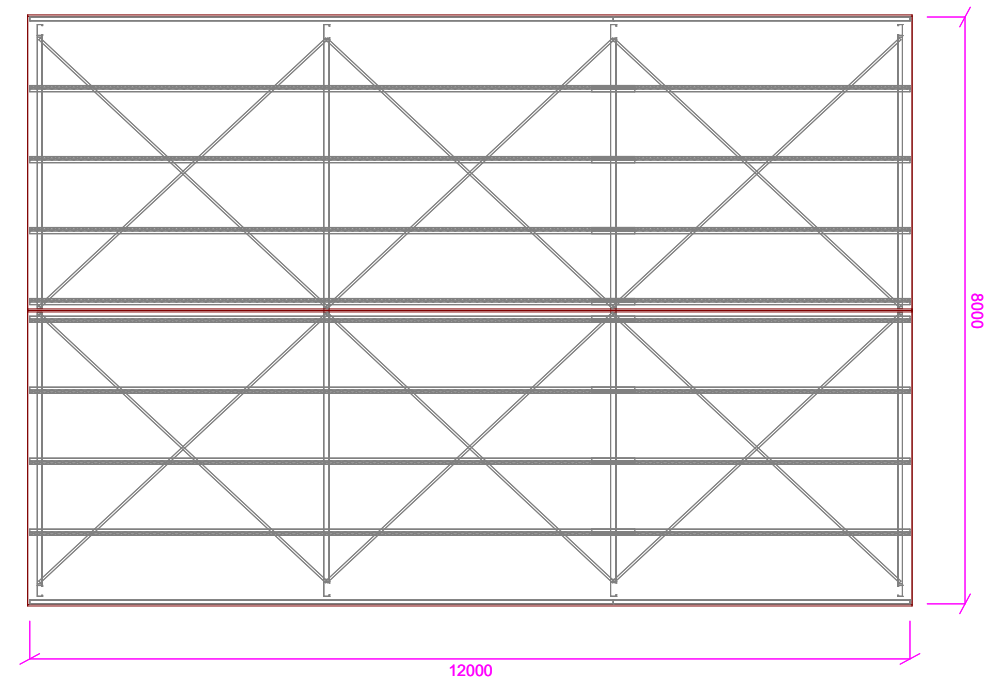
BACK VIEW



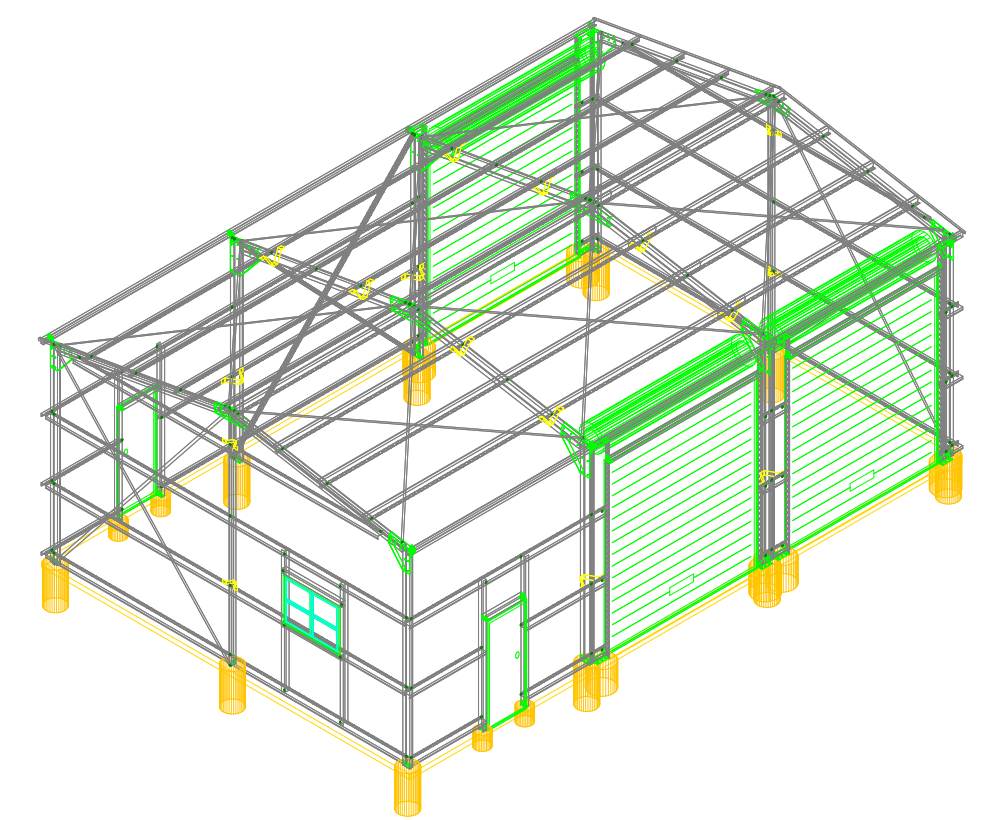
LEFT VIEW



RIGHT VIEW



PLAN VIEW

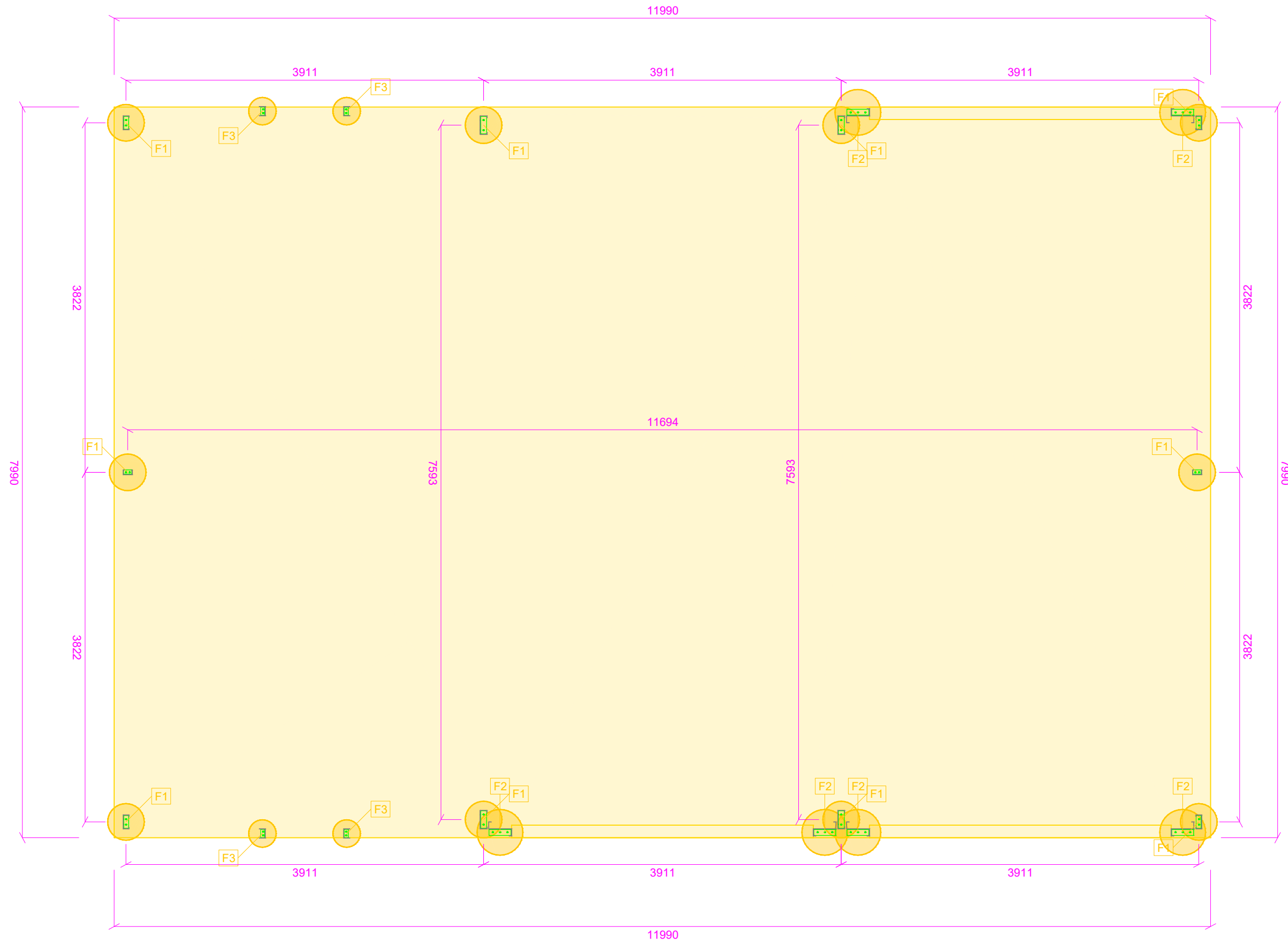


ISO FRONT LEFT VIEW

Assembly Multiview



Signed:	Drawing Number: 2 of 6
	Project No: AMMSG02_256123
	Revision: 1 - 10 Jun 2021
	26 Bell Ct
	Teesdale, VIC 3328
	Scale: N/A



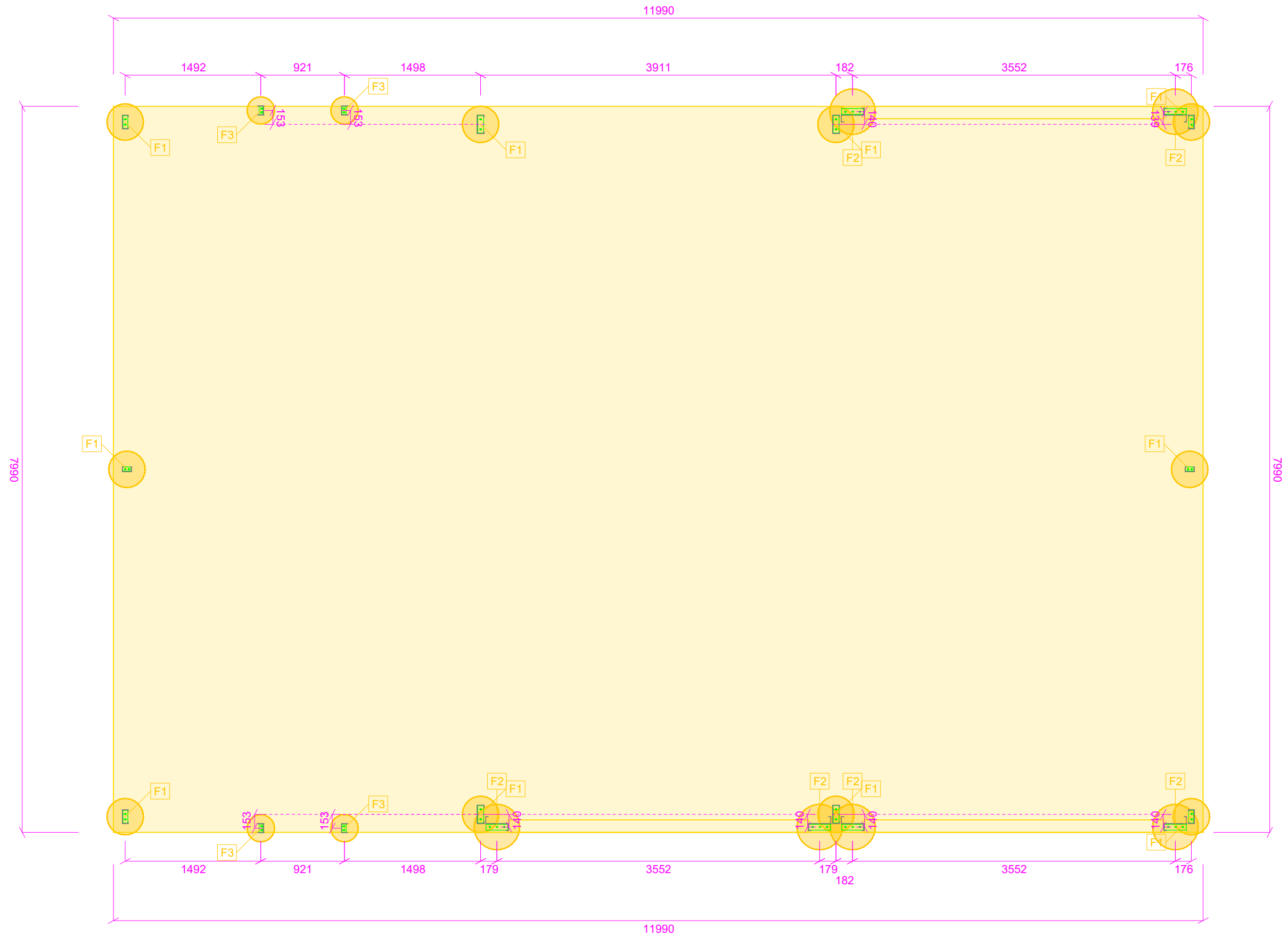
ALL MEMBER DIMENSIONS FROM
> MEMBER CENTRE <

Foundation Columns Plan View



Signed:

Drawing Number: 3 of 6
 Project No: AMMSG02_256123
 Revision: 1 - 10 Jun 2021
 26 Bell Ct
 Teesdale, VIC 3328
 Scale: 1 : 49 @ A3



ALL MEMBER DIMENSIONS FROM
> MEMBER CENTRE <

Foundation Mullions Plan View

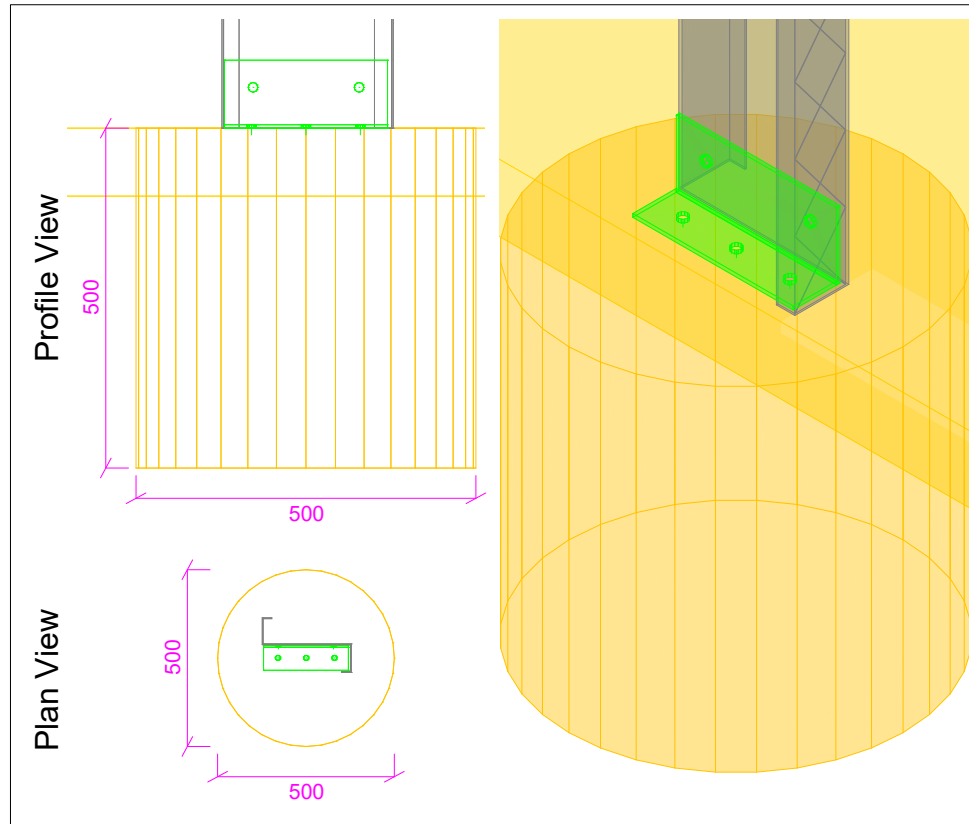


Signed:

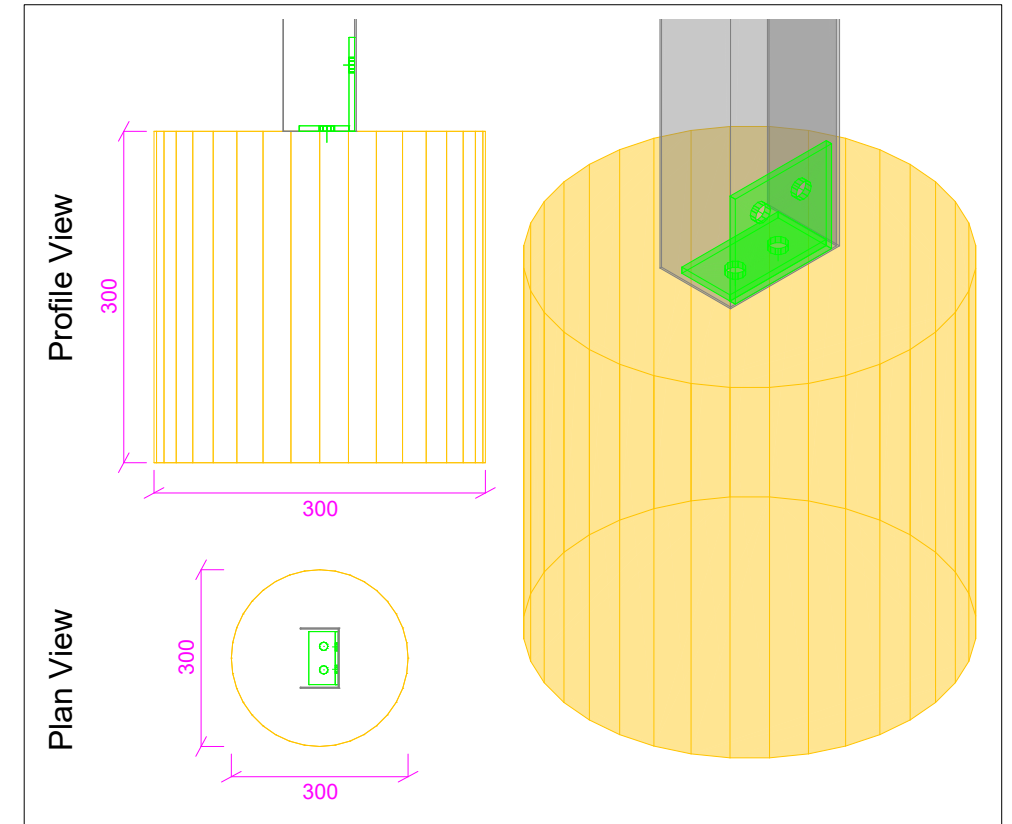
Drawing Number: 4 of 6
 Project No: AMMSG02_256123
 Revision: 1 - 10 Jun 2021
 26 Bell Ct
 Teesdale, VIC 3328
 Scale: 1 : 49 @ A3

FOOTING NOTES

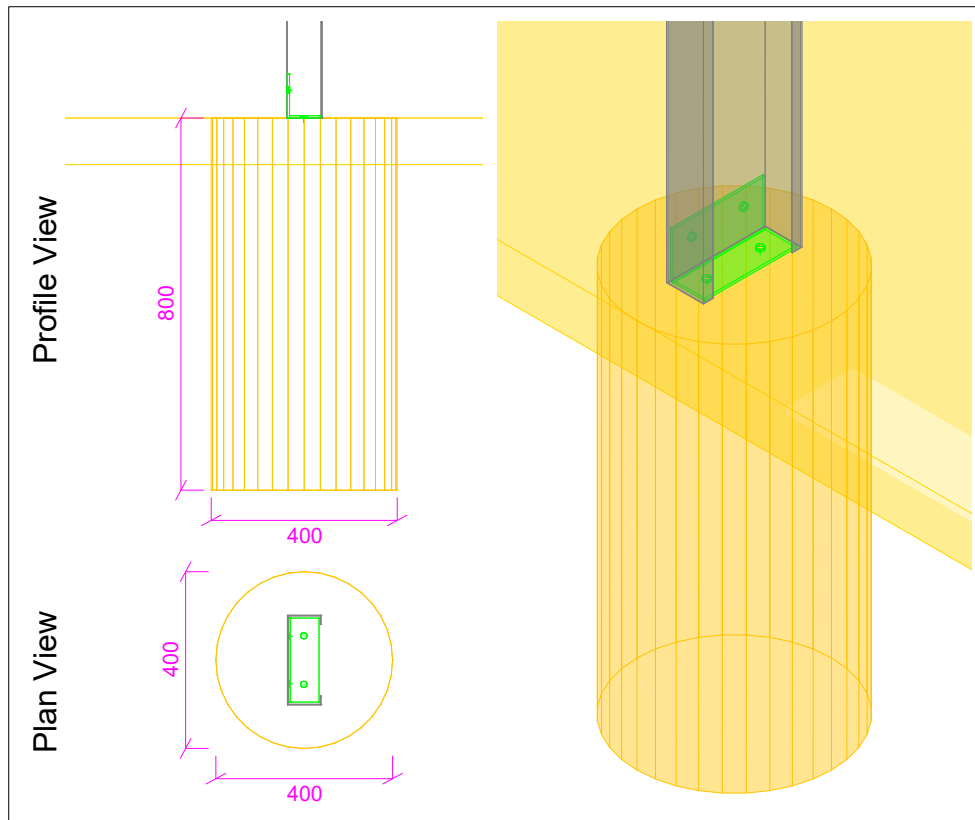
1. Footing depths shown on the following details are the minimum required for structural loads.
2. Where a shed's footings are required to comply with AS 2870 - Residential slabs & footings, the minimum footing depth (mm) shall be increased according to the site classification:
 Class A & S: 400
 Class M: 500
 Class M-D: 800
 Class H1: 1000
 Other Classes shall be determined by a geotechnical report.
3. Site = A or S - Slab 1 = 100mm with SL72 mesh 30 top cover 225mm laps.
 150 x 300 edge thickening at opening.
 Joints at 18mm centres.
 Slab 2 = 125mm -> then as per Slab 1.
 Site = M,H - Slab 1 = 100mm with SL72 mesh 40 top cover.
 Joints at 18MTR centres plus.
 Slab 2 = 125mm with SL72 mesh 40 top cover joints at 18MTR centres.



Footing: F2 (x6)



Footing: F3 (x4)



Footing: F1 (x10)

Footing Index Drawings



Signed:

Drawing Number: 5 of 6
Project No: AMMSG02_256123
Revision: 1 - 10 Jun 2021
26 Bell Ct
Teesdale, VIC 3328
Scale: N/A

Column / Mullion

Refer to detail DD-4 for column fixing detail.
Refer to certified drawings for specific sizing detail.

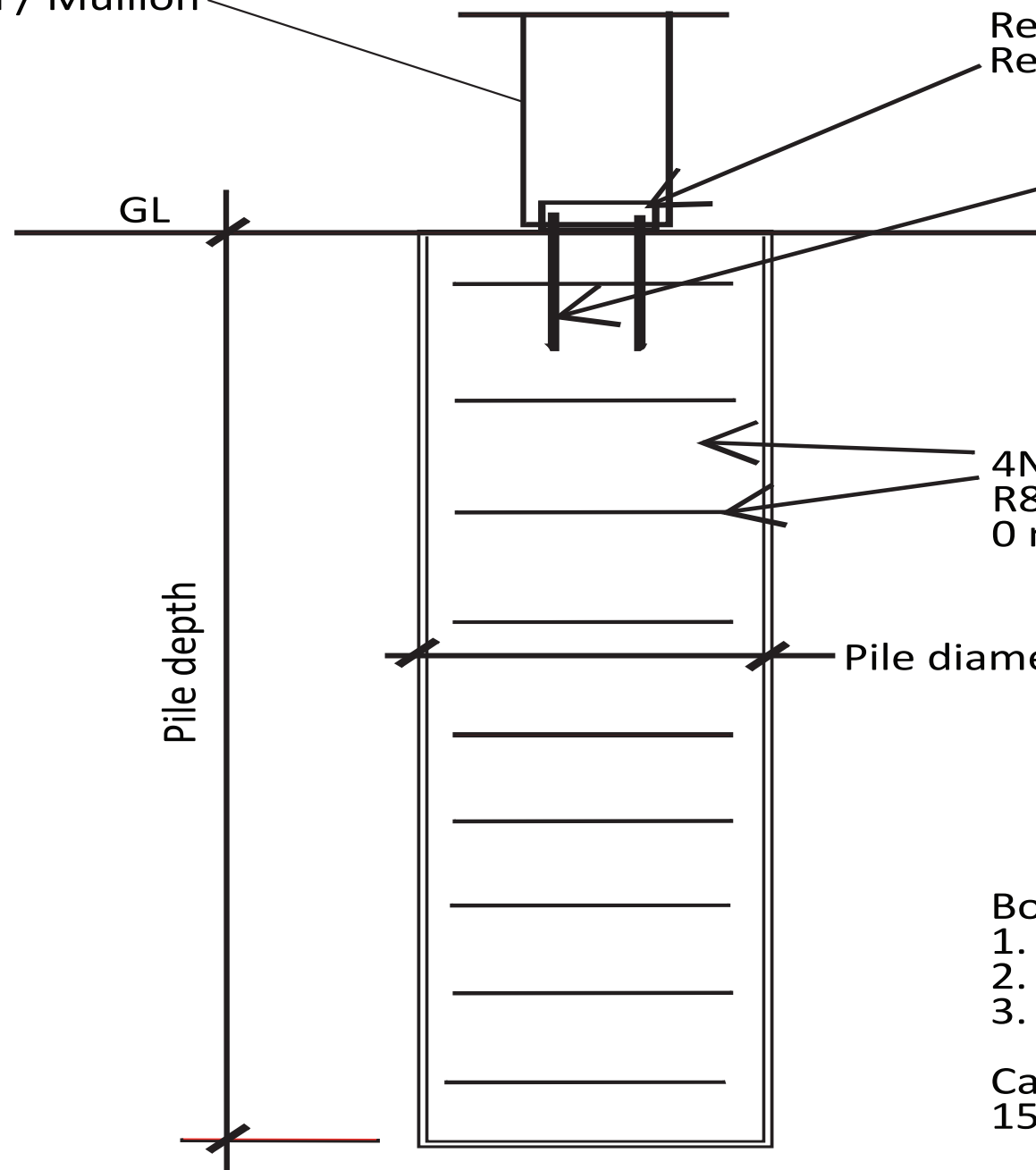
Anchor screw bolts.
M12 x 75mm / M12 x 100mm
M16 x 100mm / M16 X 125mm
Fixing anchor siz dependant of
loading and section sizing.
Please refer to your certified
drawings and bill of materials for
further detail.

4N12 at 300 CTS with 200 cogs.
R8 ligs at 300 cts.5
0 minimum cover.

Pile diameter

Bored pile notes:
1. Grade N25 concrete.
2. Use vibrator for placing concrete.
3. For use in stiff natural undisturbed soil.

Cage diameter should not extend closer than
150mm to edge of pier wall.



TYPICAL PILE DETAIL