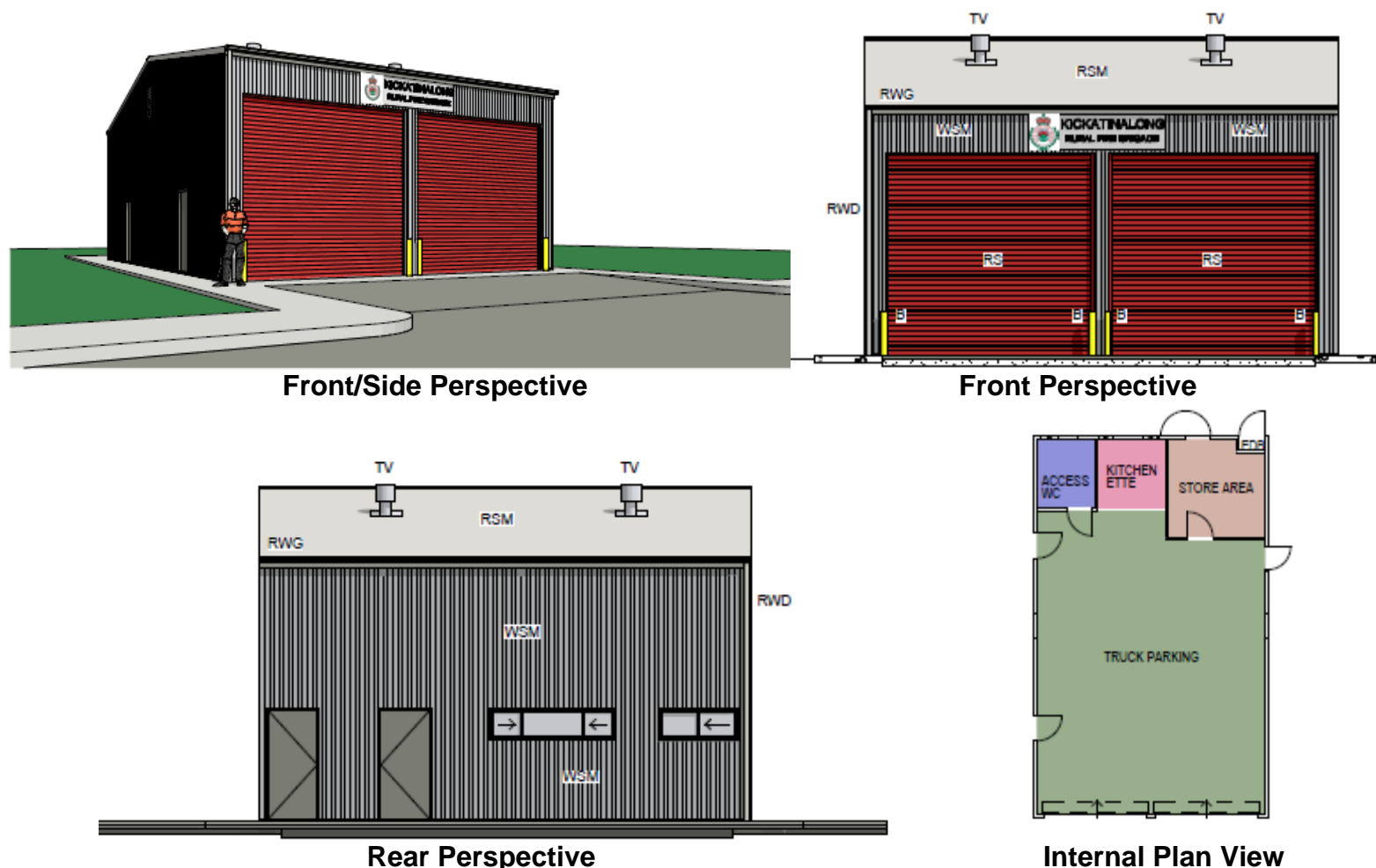


NSW RFS - CATEGORY 2A - STANDARD FIRE BRIGADE STATION

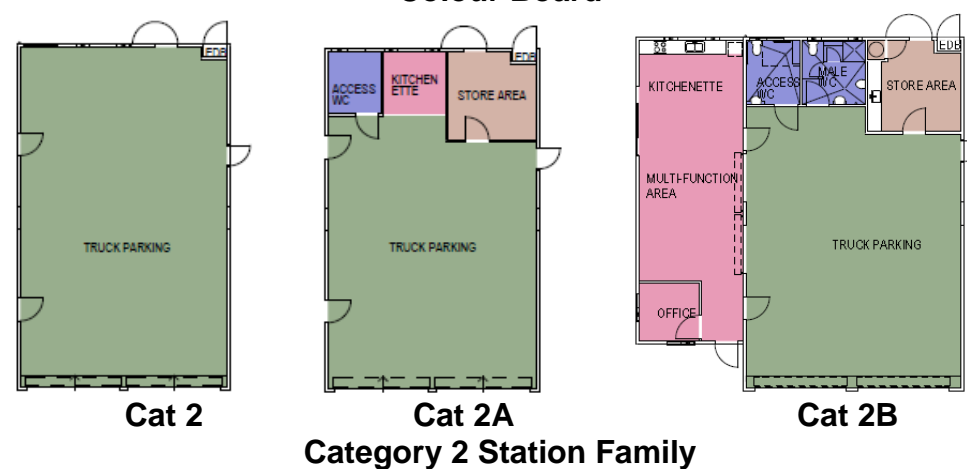


CATEGORY	OVERALL DEPTH (m)	OVERALL WIDTH (m)	Total Land Area for Building (sqm)
2A	15.260	9.340	142.53

Size



Colour Board



Category 2A Station

The Category 2A Station consists of a colour bond two bay station with amenities including:-

- One Unisex Access Toilet with Shower
- Kitchenette
- Store Area (to be fitted out by the brigade to meet their individual needs)

The station can comfortably fit two Category One Tankers

Limitations of designs

These designs are not intended to be seen as a 100% solution to all station issues. In some instances because of local government requirements (e.g. brigade stations having a dual use as a community meeting facility) or because of the block of land available (e.g. block is long and narrow) these designs may not be applicable. However it is predicted that they can be used in at least 90% of cases. Please refer to [5.1.11 — Standard Brigade Stations](#) for more details.

Where to obtain plans or find more information?

Contact Fixed Assets and Infrastructure