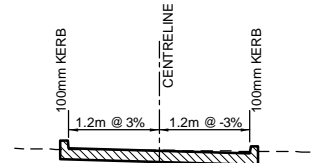
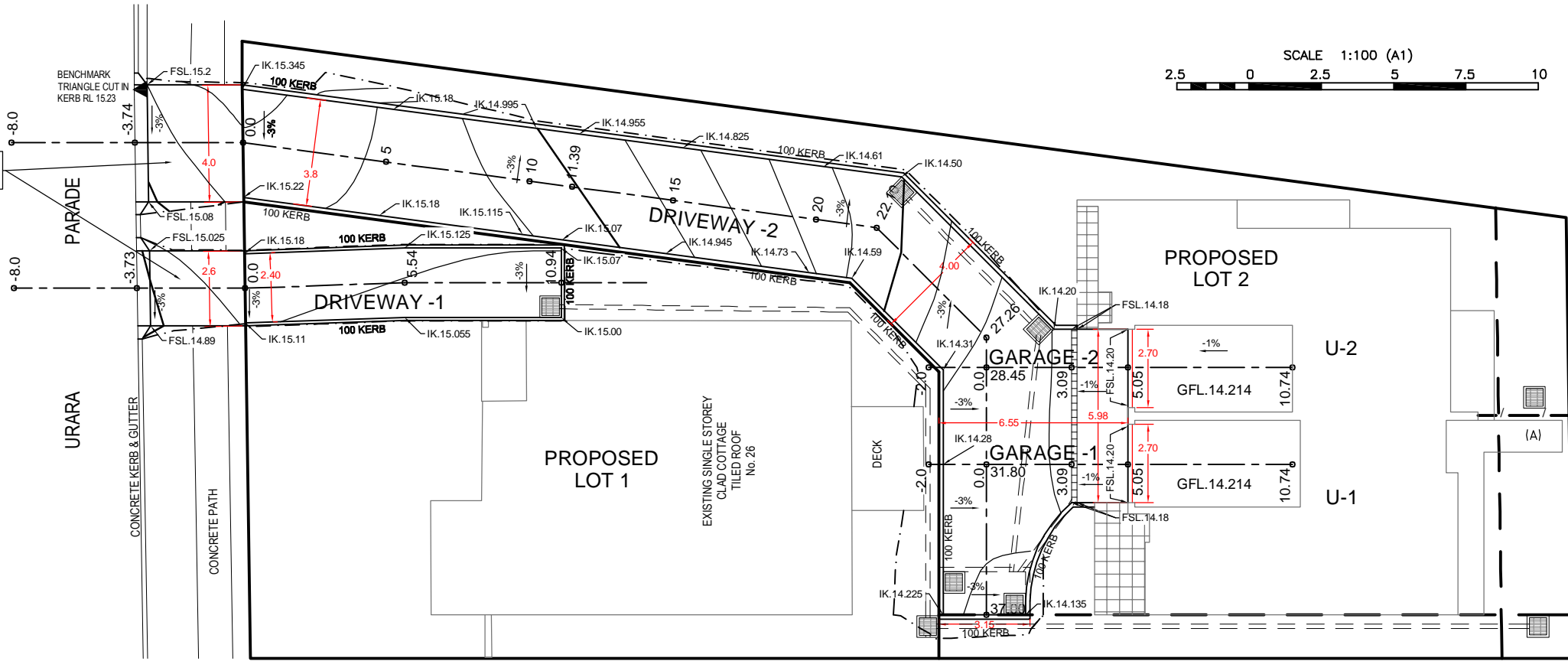
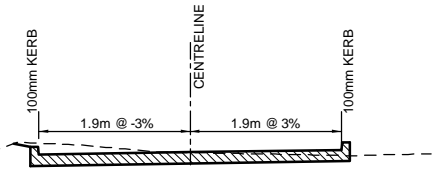


- LEGEND:**
- LOT BOUNDARY
  - EASEMENT
  - DESIGN CONTOURS @ 0.1m INTERVALS
  - DESIGN CONTOURS @ 0.5m INTERVALS
  - LIMIT OF SITE REGRADING
  - EXISTING CONCRETE
  - CENTRE LINE OF DRIVEWAY
  - PROPOSED CONCRETE DRIVEWAY
  - PROPOSED GRATED SURFACE INLET PIT
  - PROPOSED STORMWATER PIPE
  - PROPOSED CONCRETE DRIVEWAY

CONSTRUCT DRIVEWAY CROSSING IN ACCORDANCE WITH NCC STD DWG.A1300



CONC. DRIVEWAY TO DETAILS BY STRUCTURAL ENGINEER UNDER SEPARATE COVER  
**DRIVEWAY - 1**  
 TYPICAL SECTION  
 N.T.S.



CONC. DRIVEWAY TO DETAILS BY STRUCTURAL ENGINEER UNDER SEPARATE COVER  
**DRIVEWAY - 2**  
 TYPICAL SECTION  
 N.T.S.

URARA PARADE BOUNDARY

CONSTRUCT DRIVEWAY CROSSING IN ACCORDANCE WITH NCC STD DWG.A1300

CONCRETE PAVEMENT TO DETAILS BY STRUCTURAL ENGINEERS UNDER SEPARATE COVER

IP. GARAGE - 2  
IP. GARAGE - 1

Datum R.L. 9.00

DESIGN	NATURAL	CHAINAGE
	15.18	-8.00
	15.17	-7.50
	15.08	-5.00
	15.04	-3.74
	15.07	-3.59
	15.19	-3.59
	15.14	-3.29
	15.12	-3.29
	15.18	-2.50
	15.19	-2.50
	15.24	-1.80
	15.28	0.00
	15.28	0.01
	15.28	0.01
	15.24	2.00
	15.26	2.50
	15.23	2.50
	15.18	5.00
	15.12	7.50
	15.12	7.50
	15.04	10.00
	14.98	11.39
	14.97	12.50
	14.98	12.50
	14.89	15.00
	14.81	17.50
	14.76	19.00
	14.72	19.00
	14.67	20.00
	14.56	22.10
	14.54	22.50
	14.51	25.00
	14.39	25.28
	14.30	27.26
	14.27	27.30
	14.26	28.45
	14.26	28.59
	14.26	29.26
	14.25	30.00
	14.23	30.12
	14.23	31.80
	14.42	32.50
	14.20	35.00
	14.50	35.00
	14.20	37.00
	14.28	37.01
	14.28	37.16
	14.50	37.50
	14.44	38.45

URARA PARADE BOUNDARY

CONSTRUCT DRIVEWAY CROSSING IN ACCORDANCE WITH NCC STD DWG.A1300

CONCRETE PAVEMENT TO DETAILS BY STRUCTURAL ENGINEERS UNDER SEPARATE COVER

Datum R.L. 9.00

DESIGN	NATURAL	CHAINAGE
	15.04	-8.00
	15.02	-7.50
	14.94	-5.00
	14.89	-3.73
	14.89	-3.73
	14.89	-3.59
	14.89	-3.59
	14.89	-3.29
	14.89	-3.29
	15.05	-2.50
	15.08	-2.50
	15.10	-1.80
	15.14	0.00
	15.14	0.00
	15.12	2.50
	15.10	5.00
	15.09	5.54
	15.07	7.50
	15.05	10.00
	14.97	10.84
	14.97	10.96
	14.97	11.01
	14.93	11.05
	14.86	15.00
	14.80	17.00

BOUNDARY 100 KERB

IP. DRIVEWAY-1

200mm TRENCH DRAIN

14mm STEPDOWN

GFL UNIT 1 = 14.214

Datum R.L. 9.00

DESIGN	NATURAL	CHAINAGE
	14.42	-2.00
	14.28	-1.51
	14.28	-1.50
	14.28	-1.00
	14.23	0.00
	14.23	0.00
	14.22	1.00
	14.20	2.00
	14.18	3.00
	14.18	3.09
	14.18	4.00
	14.19	4.00
	14.20	5.00
	14.20	5.05
	14.21	5.20
	14.21	6.00
	14.21	7.00
	14.21	8.00
	14.21	9.00
	14.21	10.00
	14.21	10.74

BOUNDARY 100 KERB

IP. DRIVEWAY-1

200mm TRENCH DRAIN

14mm STEPDOWN

GFL UNIT 2 = 14.214

Datum R.L. 9.00

DESIGN	NATURAL	CHAINAGE
	14.48	-2.00
	14.33	-1.61
	14.33	-1.50
	14.33	-1.00
	14.33	0.00
	14.27	0.00
	14.24	1.00
	14.24	2.00
	14.21	3.00
	14.18	3.09
	14.18	4.00
	14.19	4.00
	14.20	5.00
	14.20	5.05
	14.21	5.20
	14.21	6.00
	14.21	7.00
	14.21	8.00
	14.21	9.00
	14.21	10.00
	14.21	10.74

**DRIVEWAY - 1**

**GARAGE - UNIT 1**

**GARAGE - UNIT 2**

CONSTRUCTION ISSUE

A	ISSUED FOR CONSTRUCTION	20/02/25
Ed.	Details of Revisions	Date

"COPYRIGHT NOTICE"  
 THIS PLAN AND THE INFORMATION IT CONTAINS ARE COPYRIGHT AND REMAIN THE PROPERTY OF LAND DEVELOPMENT SOLUTIONS Pty Ltd.  
 USE OF THE PLAN AND INFORMATION IT CONTAINS FOR ANY OTHER PURPOSE IS NOT PERMITTED UNLESS PRIOR WRITTEN APPROVAL HAS BEEN OBTAINED FROM LAND DEVELOPMENT SOLUTIONS Pty Ltd.

Client / Council Development Consent Number

Scale: 1:100 (A1) 1:200 (A3) Datum: AHD  
 Origin: - Contour Int: -  
 Designed: B.B. Drawn: AW  
 Checked: B.B. Approved: J.H.  
 Job Number: 7340 Drawing File: 7340-Driveway-C1

Registered Surveyor:

**LAND DEVELOPMENT SOLUTIONS**

Surveying • Planning • Engineering

PO Box 853 THE JUNCTION NSW 2291

Phone: (02) 4963 5520 Fax: (02) 4963 5521  
 E-mail: mail@lds.net.au

ABN: 42 110 897 928

**PROPOSED DRIVEWAY DETAILS**

No.26 URARA PARADE  
 WALLSEND

Drawing Number	Edition
<b>1</b>	<b>A</b>
Sheet 1 of 1	