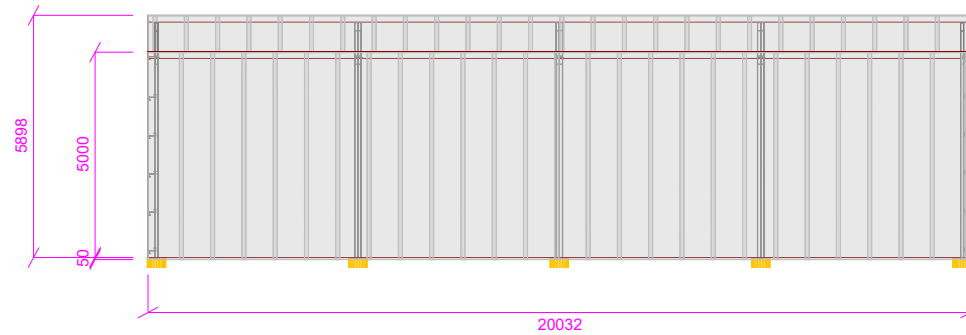
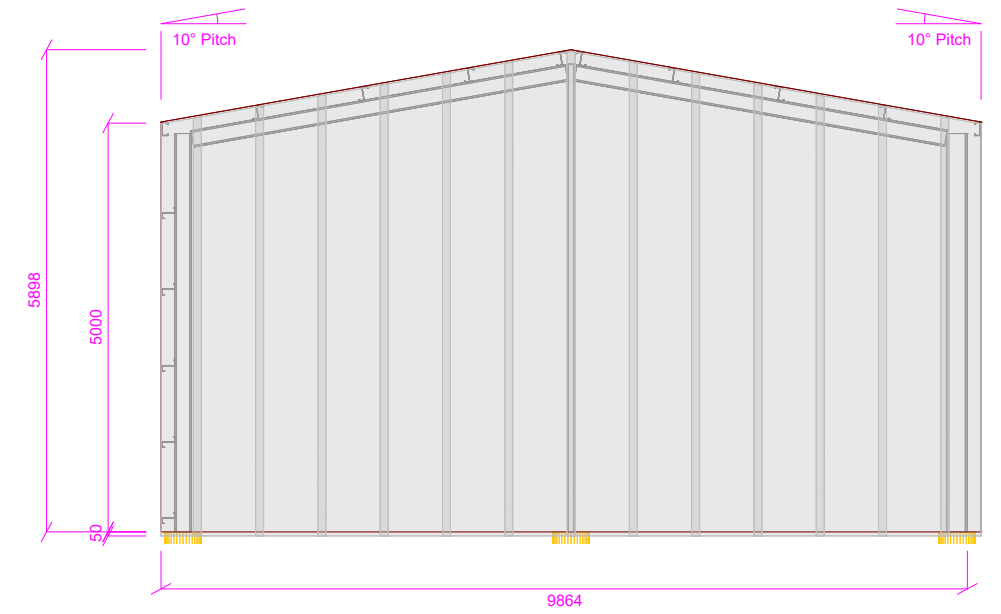


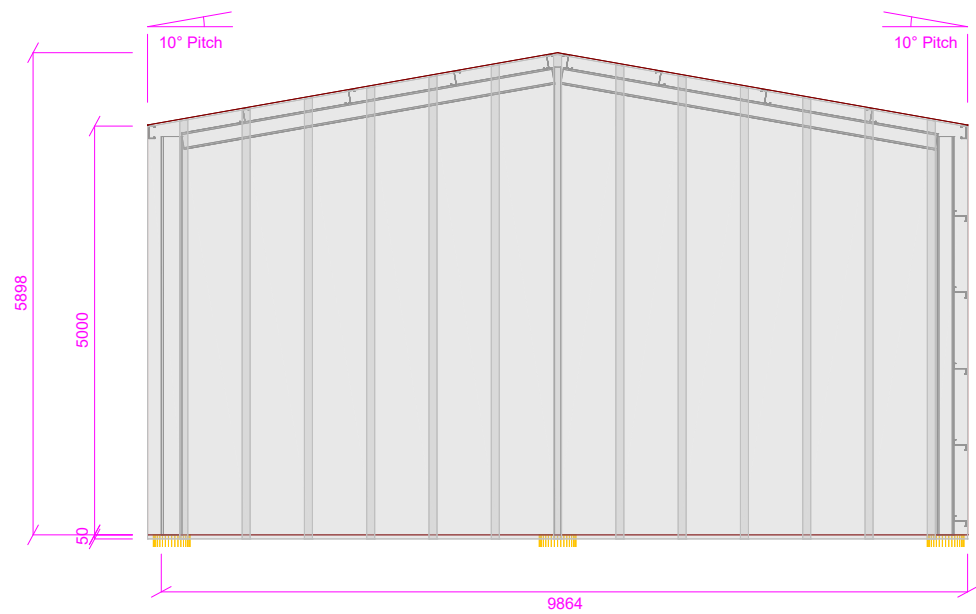
FRONT VIEW



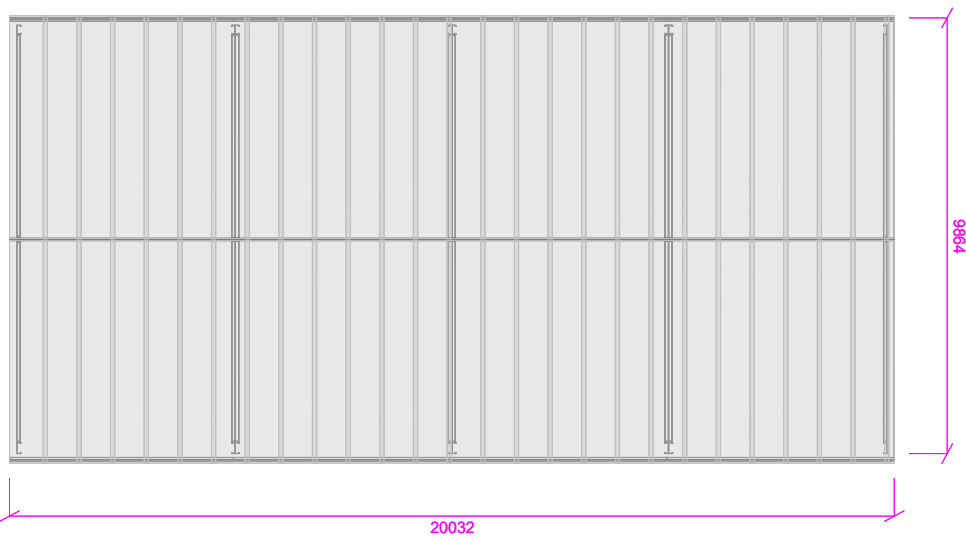
BACK VIEW



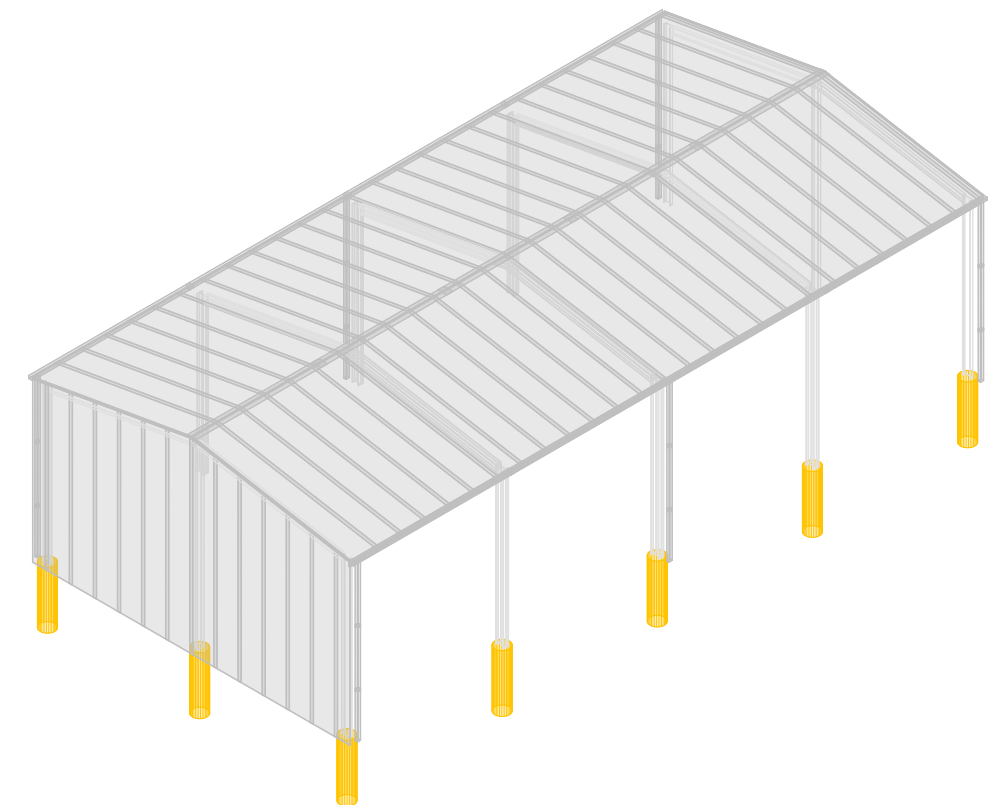
LEFT VIEW



RIGHT VIEW



PLAN VIEW

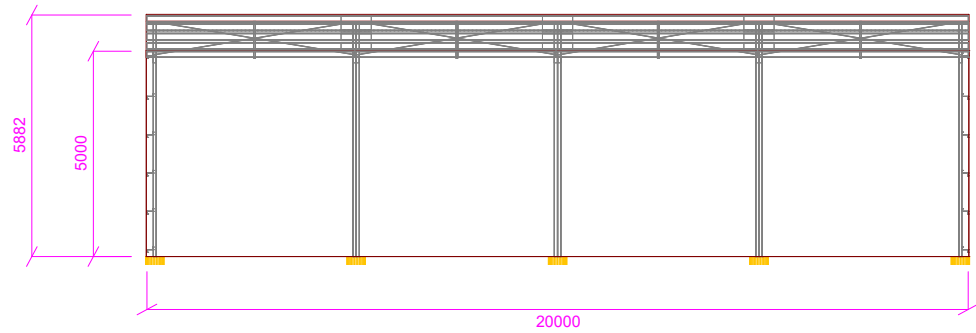


ISO FRONT LEFT VIEW

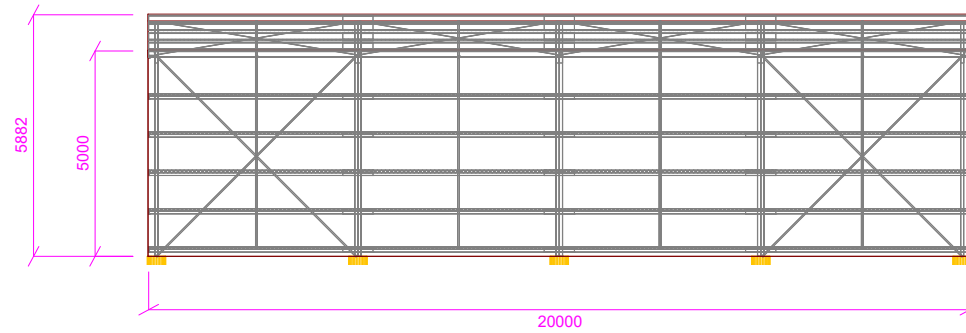
**Elevation Multiview**



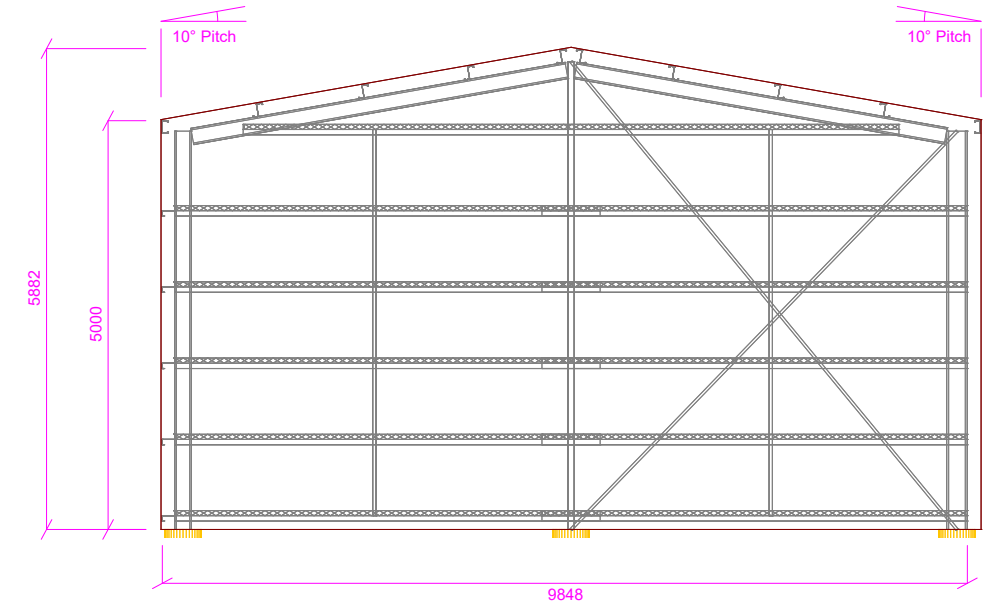
Signed:	Drawing Number: 1 of 5
	Project No: VSY02_26396
	Revision: 1 - 21 Jun 2021
	Coughlan Rd
	Oakvale, VIC 3540
	Scale: N/A



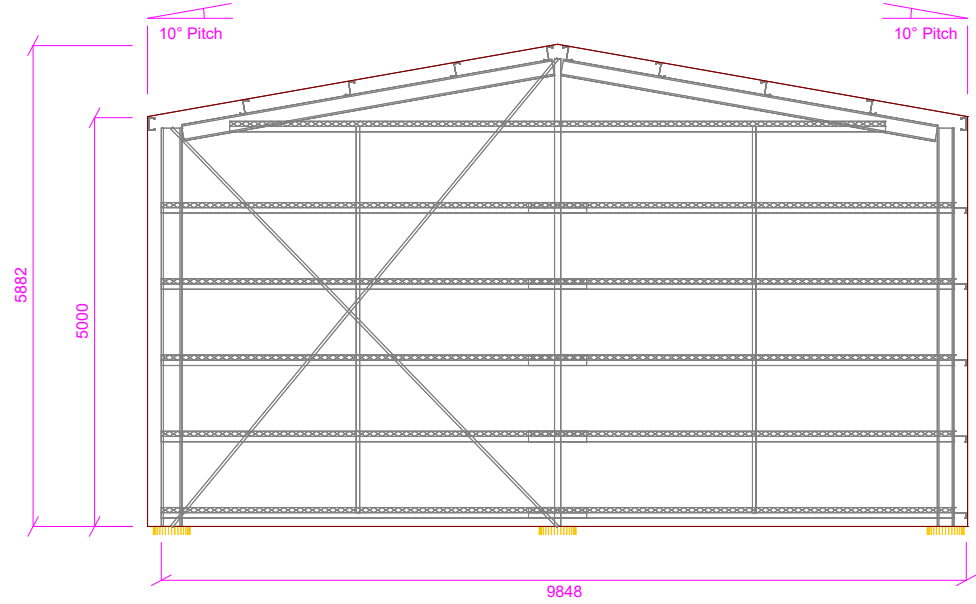
FRONT VIEW



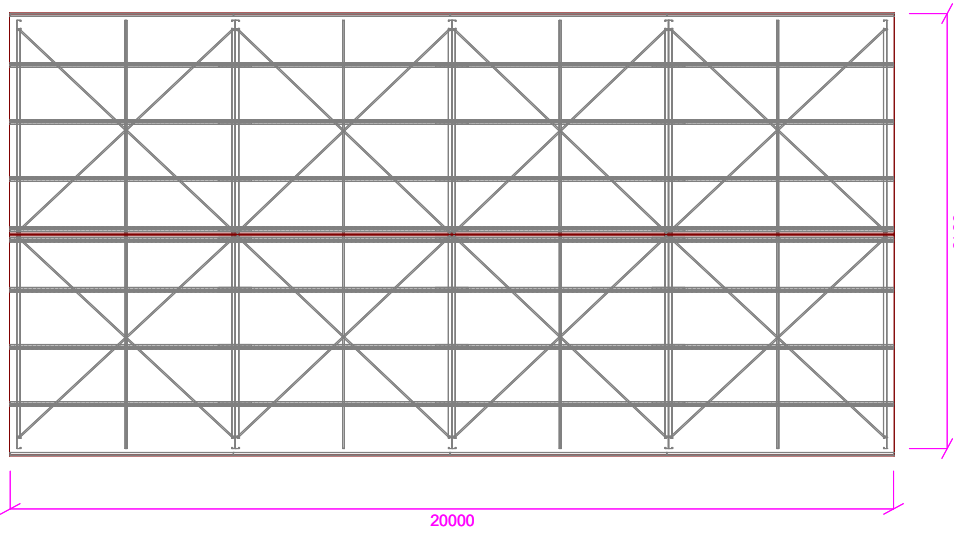
BACK VIEW



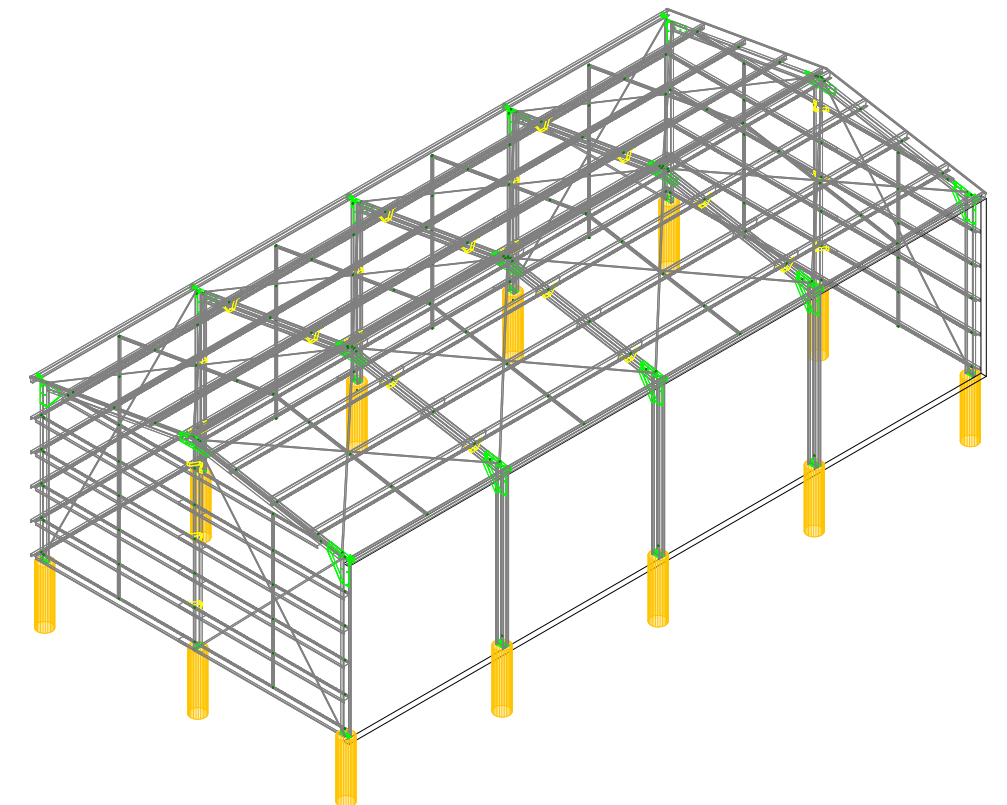
LEFT VIEW



RIGHT VIEW



PLAN VIEW



ISO FRONT LEFT VIEW

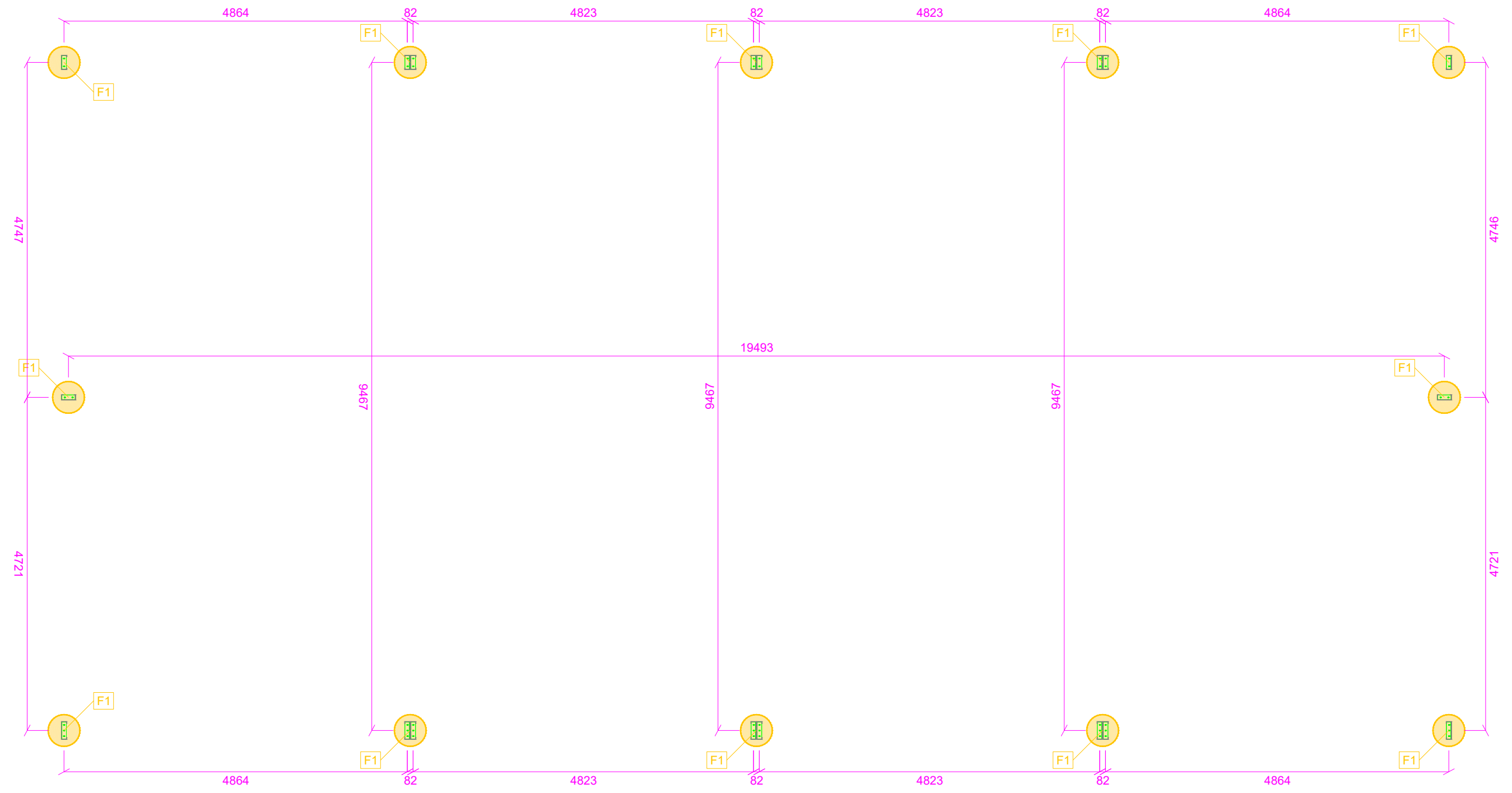
# Assembly Multiview



Signed:

Drawing Number: 2 of 5  
 Project No: VSY02\_26396  
 Revision: 1 - 21 Jun 2021  
 Coughlan Rd  
 Oakvale, VIC 3540  
 Scale: N/A

NOTE: Construction drawings must be used in conjunction with the Shed Plus Installation Manual.



ALL MEMBER DIMENSIONS FROM  
> MEMBER CENTRE <

### Foundation Columns Plan View

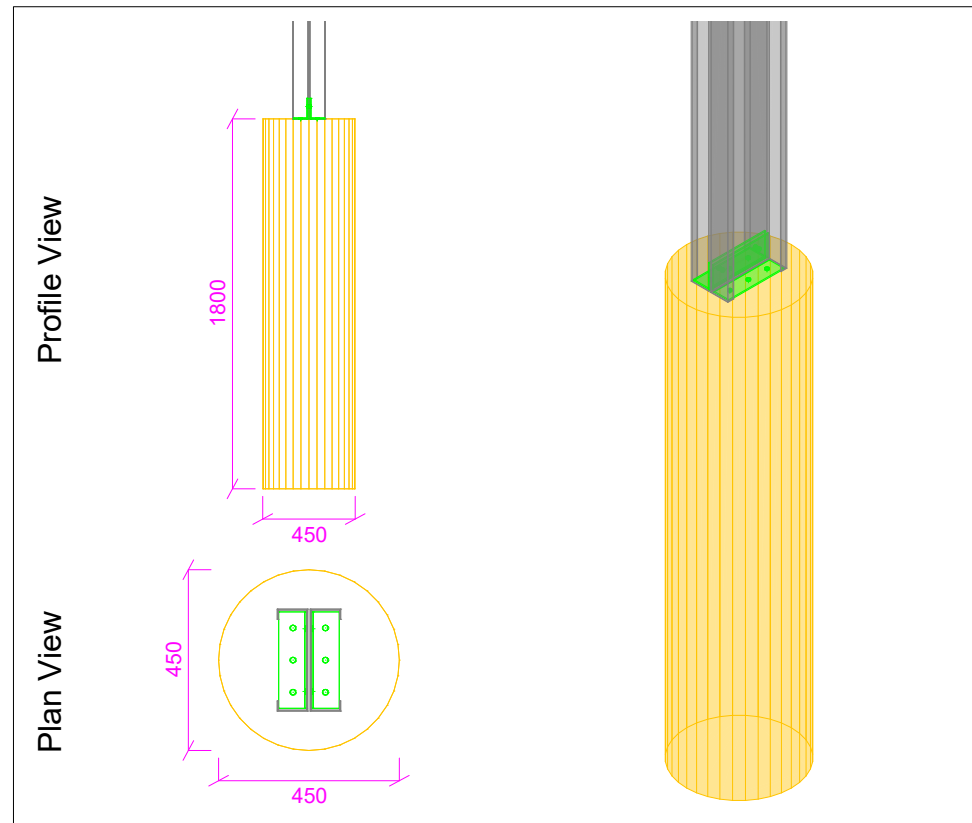


Signed:

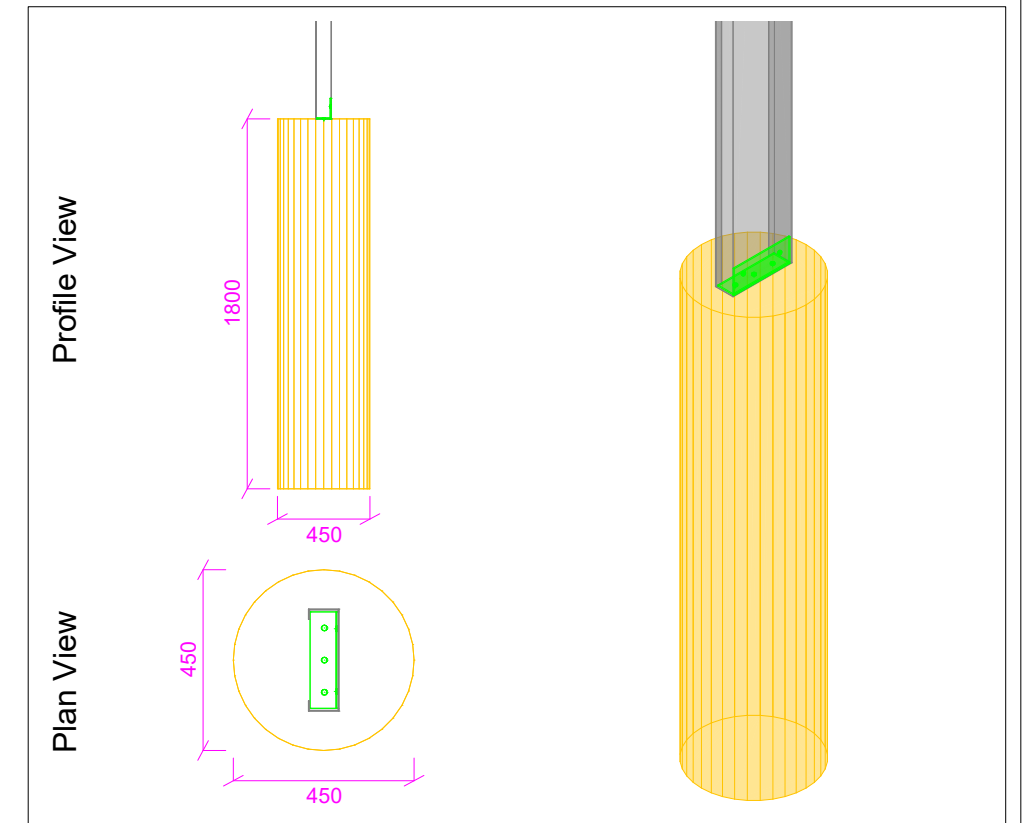
Drawing Number: 3 of 5
Project No: VSY02_26396
Revision: 1 - 21 Jun 2021
Coughlan Rd
Oakvale, VIC 3540
Scale: 1 : 62 @ A3

**FOOTING NOTES**

1. Footing depths shown on the following details are the minimum required for structural loads.
2. Where a shed's footings are required to comply with AS 2870 - Residential slabs & footings, the minimum footing depth (mm) shall be increased according to the site classification:  
 Class A & S: 400  
 Class M: 500  
 Class M-D: 800  
 Class H1: 1000  
 Other Classes shall be determined by a geotechnical report.
3. Construction drawings must be used in conjunction with the Shed Plus Installation Manual.



Footing: [B2B] F1 (x12)



Footing: F1 (x6)

**Footing Index Drawings**



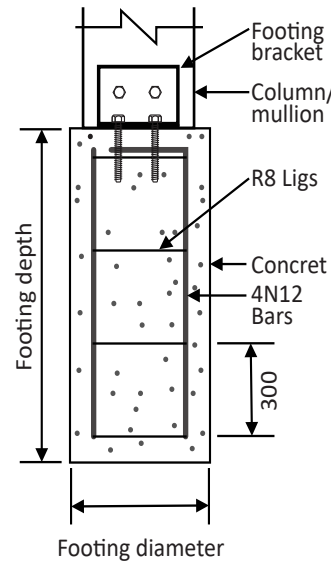
Signed:

Drawing Number: 4 of 5
Project No: VSY02_26396
Revision: 1 - 21 Jun 2021
Coughlan Rd
Oakvale, VIC 3540
Scale: N/A

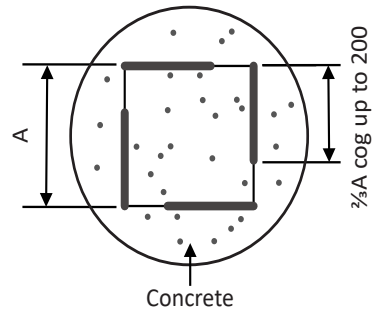
# TYPICAL FOOTING CONSTRUCTION NOTES AND DETAILS

## Bored Footing

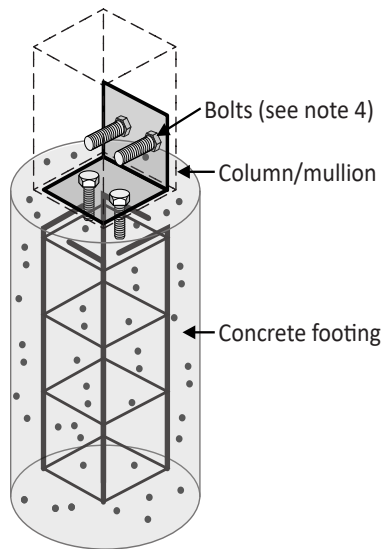
Side View



Plan View

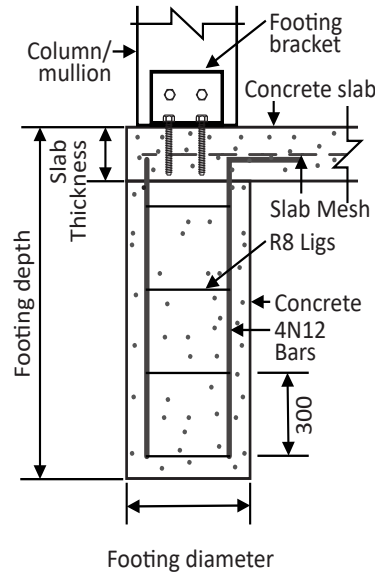


ISO View

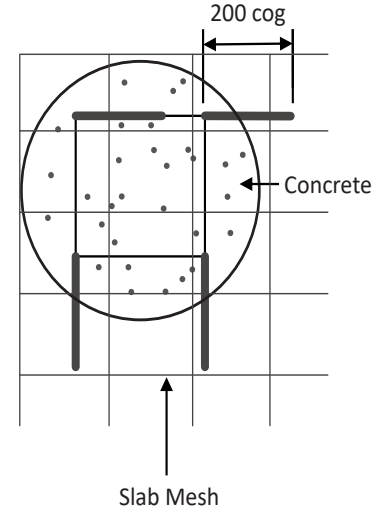


## Bored Footing with Slab

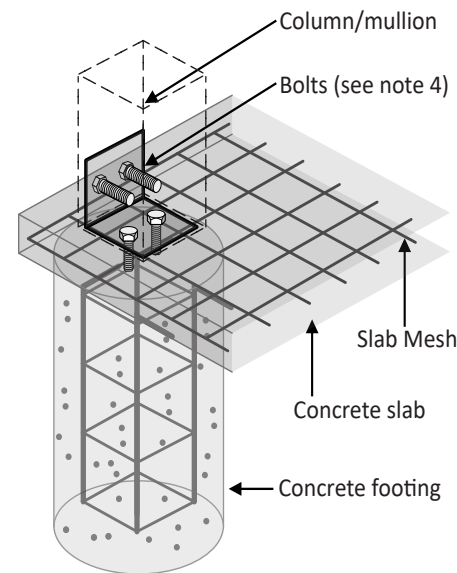
Side View



Plan View

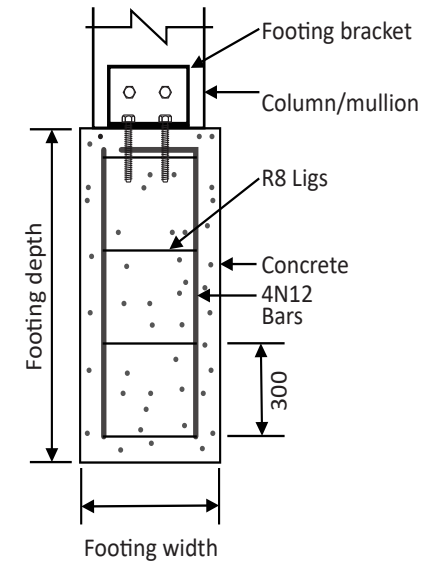


ISO View

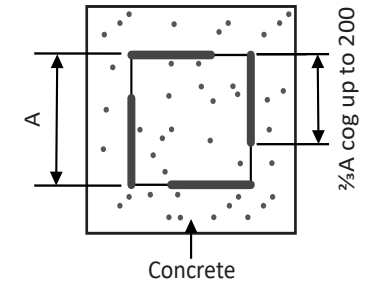


## Square Footing

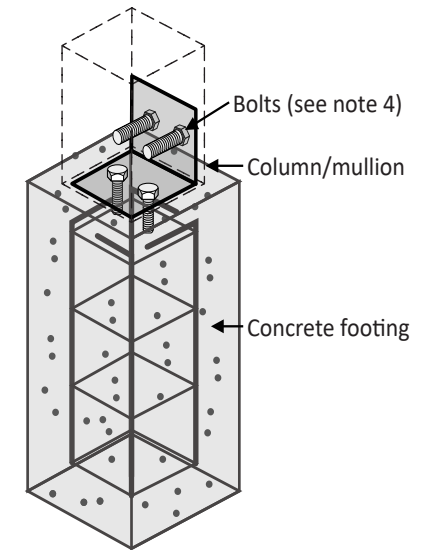
Side View



Plan View



ISO View



### Notes

1. Longitudinal reinforcement shall be 4N12 with cogs at top. R8 ligs at 300 cts. 100 minimum cover.
2. For footing bracket, refer to connection drawing for column fixing detail and connection configuration.
3. All concrete work to be carried out in accordance with AS3600 & AS2870.
4. Anchor quantity is for indicative purpose only.
5. All reinforcements shall conform with AS4671-2001.
6. Care should be taken to ensure that bolts are anchored below without shifting any reinforcement fabric or bars.
7. The typical footing construction notes and details must be read in conjunction with the footing notes. The footings and slab must be constructed with concrete edge beams, internal beams or edge thickening as required.
8. The details are not applicable for sheds supported by raft slab only (i.e. slab with integrated beams).



Signed:

Drawing Number: 5 of 5  
 Project No: VSY02\_26396  
 Revision: 1 - 21 Jun 2021  
 Coughlan Rd  
 Oakvale, VIC 3540  
 Scale: N/A