
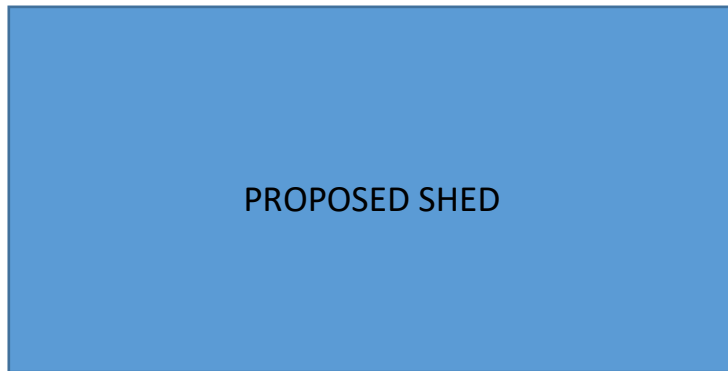
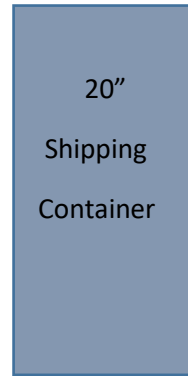
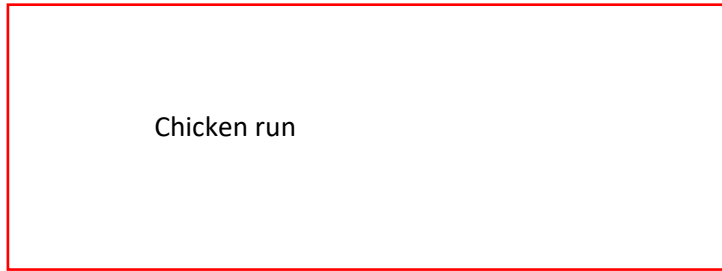
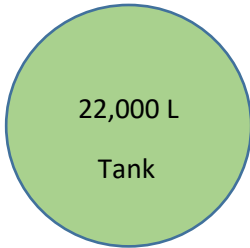
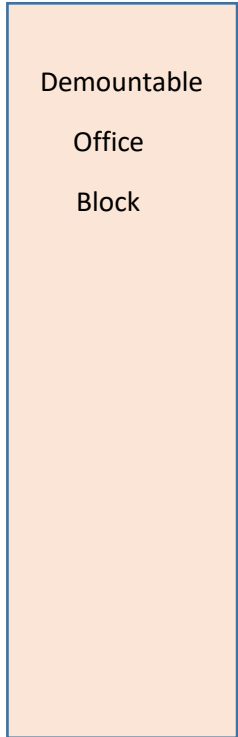
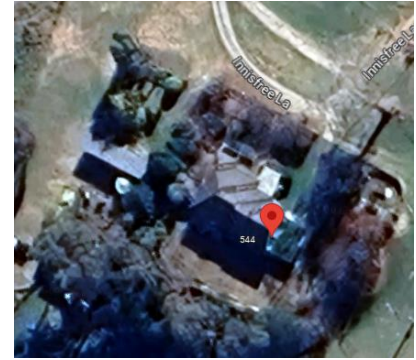
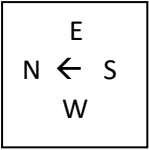


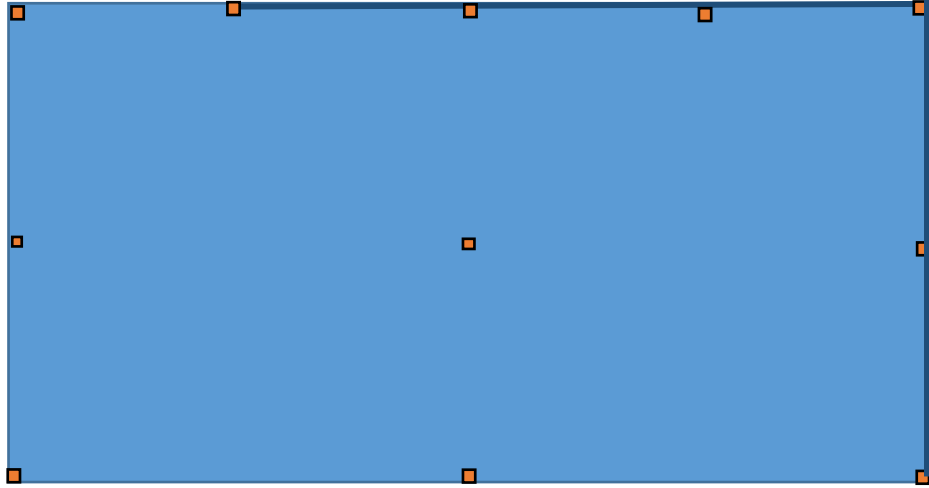
SHED SITE PLAN 





SKILLION ROOF I, Sloping up N → S

E, 4 spans @ 3m; 1 span open, 3 spans closed



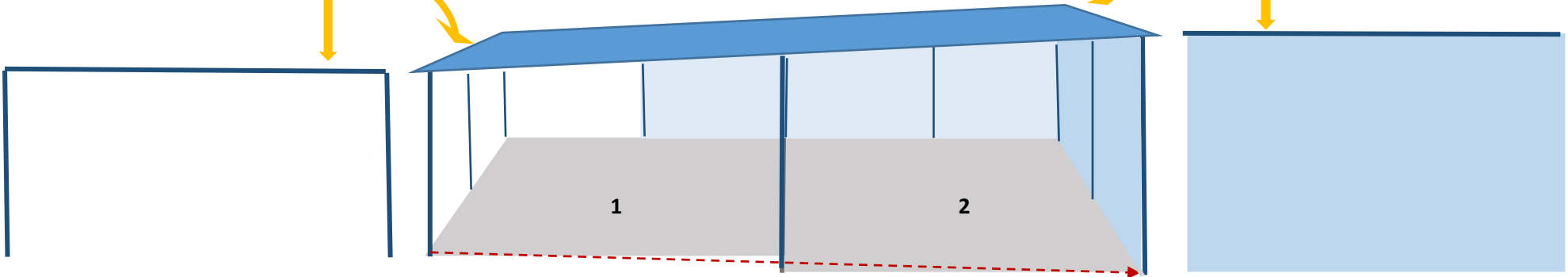
N, 2 spans @ 3m; both open

S, 2 spans @ 3m; both closed

Height of N wall approx. 3.25 m

W, 2 spans @ 6m; both open

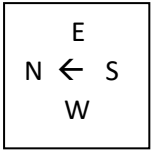
Height of S wall approx. 5 m



Open to the N & back of NE span

Ground level slopes down, N → S, 1:25 (~3°)  
Step down between Bays 1 & 2

Skillion roof, slope N → S

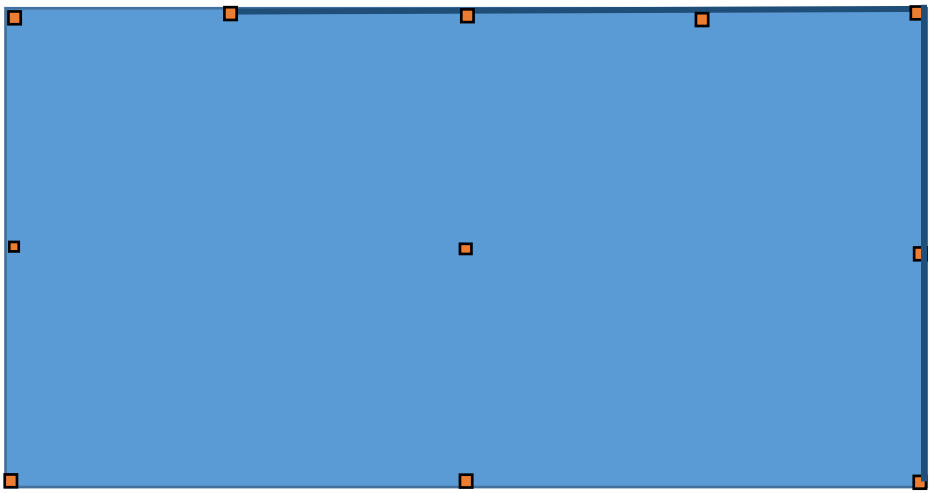


SKILLION ROOF II, Sloping up E → W

E, 4 spans @ 3m; 1 span open, 3 spans closed

N, 2 spans @ 3m; both open

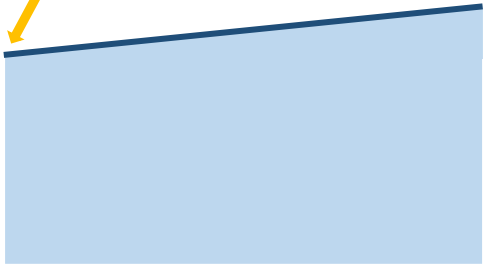
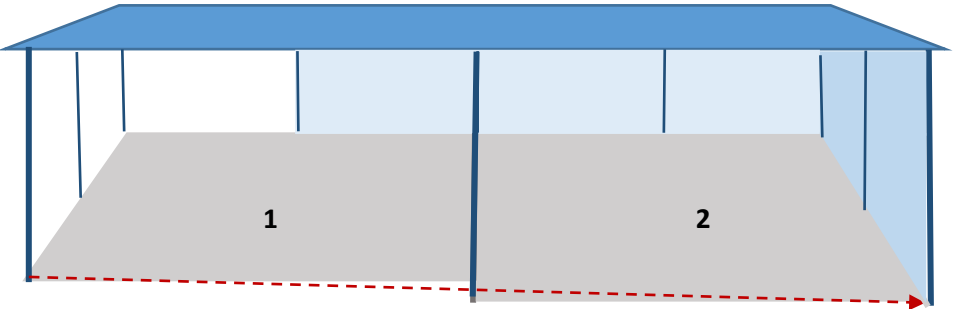
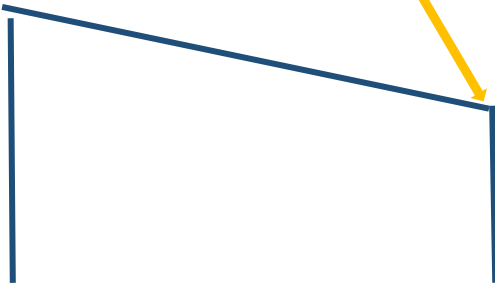
S, 2 spans @ 3m; both closed



W, 2 spans @ 6m; both open

Height of NE corner approx. 3.25

Height of SE corner approx. 5 m



Open to the N & back of NE span

Ground level slopes down, N → S, 1:25 (~3°)  
Step down between Bays 1 & 2

Skillion roof, slope up E → W