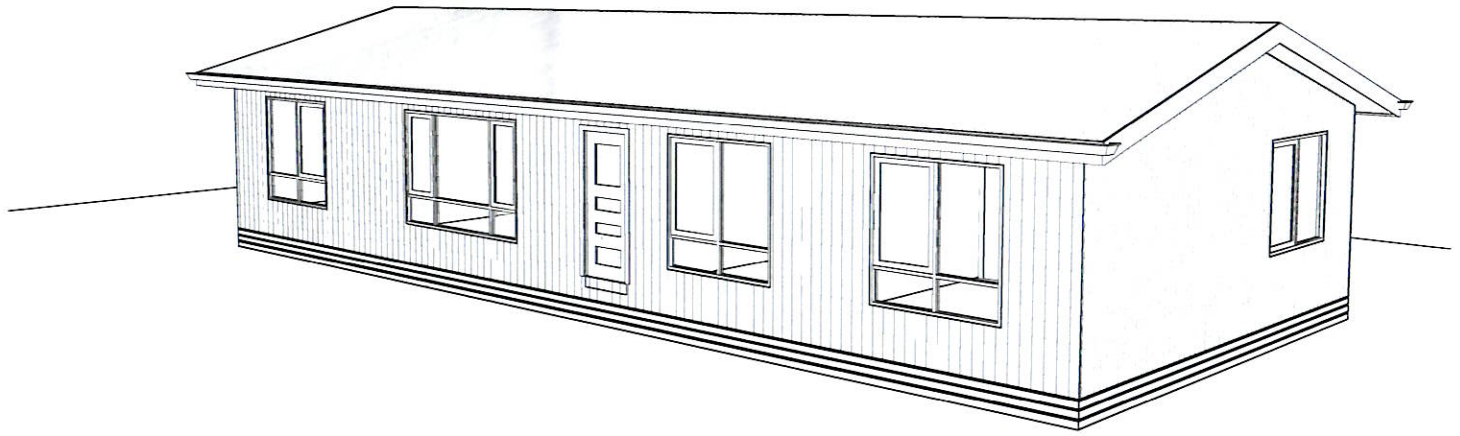


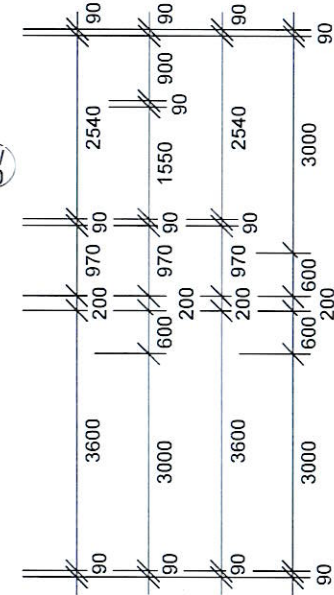
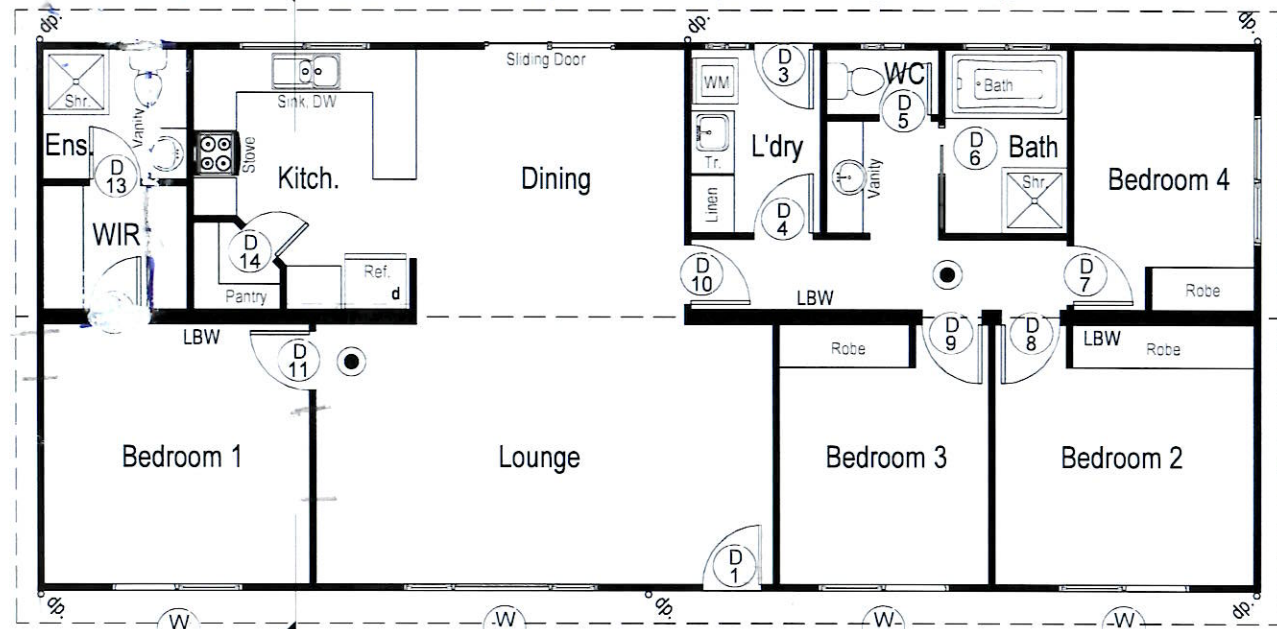
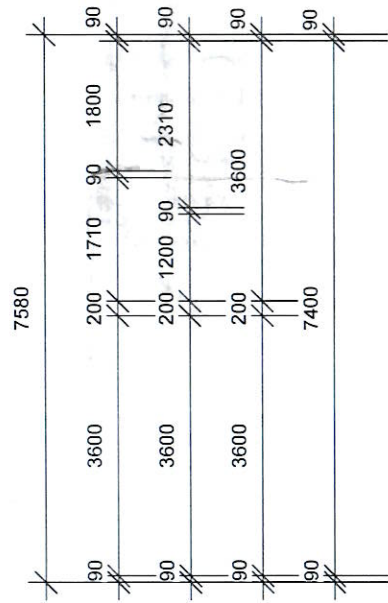
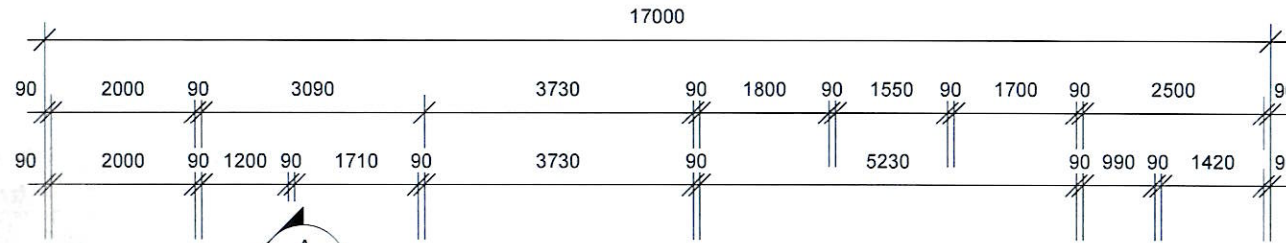
**LEGEND:**

- 2/90mm DOUBLE STUD WALL
- 90mm STUD WALL
- SMOKE DETECTOR TO AS.3786
- LBW LOAD BEARING WALL
- h --- BRACING UNIT (REFER TO GENERAL SPECIFICATION FOR SCHEDULE DOWN PIPE)
- d ---
- WIND DIRECTION



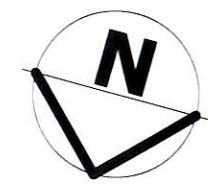
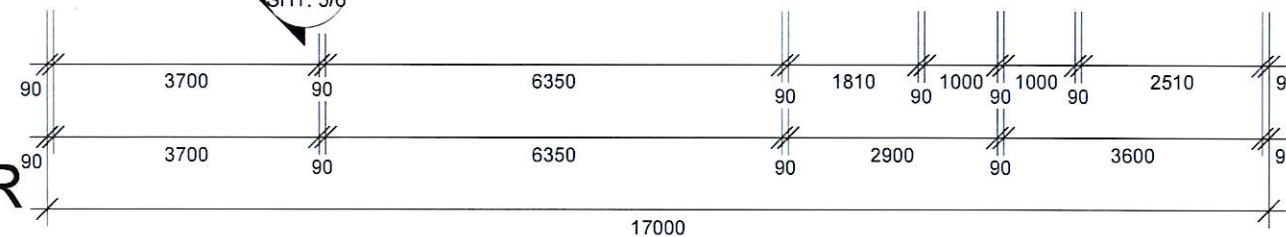
**PERSPECTIVE**

**NOTE:**  
PROVIDE SUB TERMITE PROTECTION IN ACCORDANCE WITH AS 3660-1995



**STUD SCHEDULE**

- N/3 WIND CLASSIFICATION
- STUDS @ 450 CTRS. NOT NOTCHED FOR BRACING
- WALL STUD**
- CEILING LEVEL: UP TO CEILING (2400)
- UP TO 3600
- SIZE: 90 x 35
- MATERIAL: MGP10
- 90 x 45
- MATERIAL: MGP10
- JAMB STUDS**
- MAIN ROOF RLW VALUE: 2195
- CEILING LEVEL: UP TO 3600
- SIZE: 90 x 45
- MATERIAL: MGP10
- 900 - 1900
- MATERIAL: MGP10
- 1900 - 2800
- MATERIAL: MGP10
- BOTTOM PLATE**
- RLW VALUE: 2195
- C.L. UP TO 3600
- SIZE: 45 x 90
- MATERIAL: MGP10
- TOP PLATE**
- RLW VALUE: 2195
- C.L. UP TO 3600
- SIZE: 45 x 90
- MATERIAL: MGP10

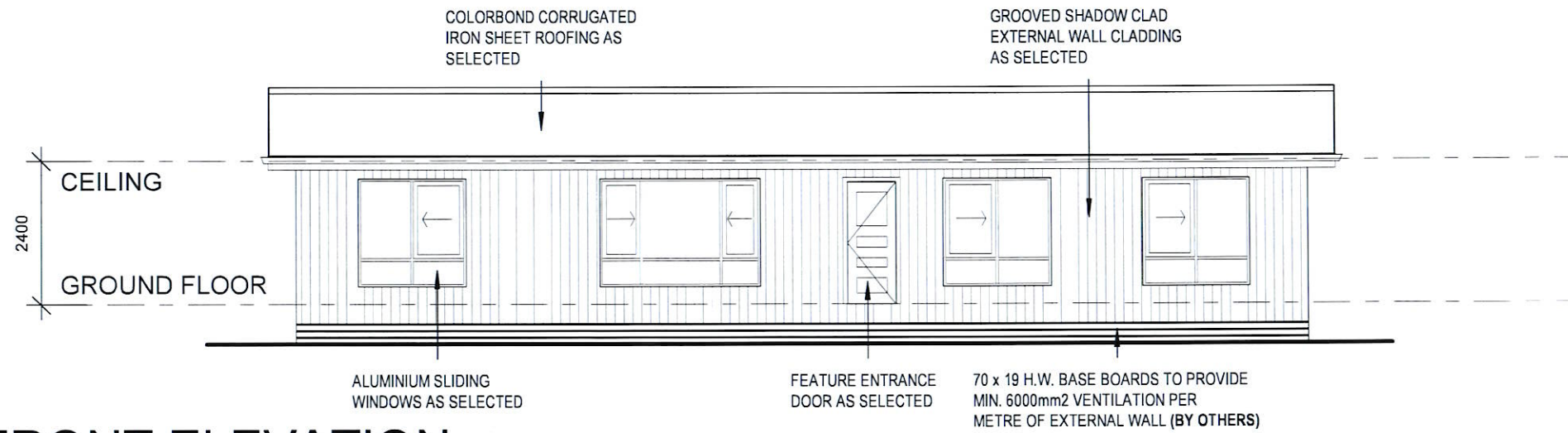


AREA ANALYSIS		
Name	Area	SQ'S
RESIDENCE	128.10 m <sup>2</sup>	13.78
VERANDAH	31.37 m <sup>2</sup>	3.37

**GROUND FLOOR**

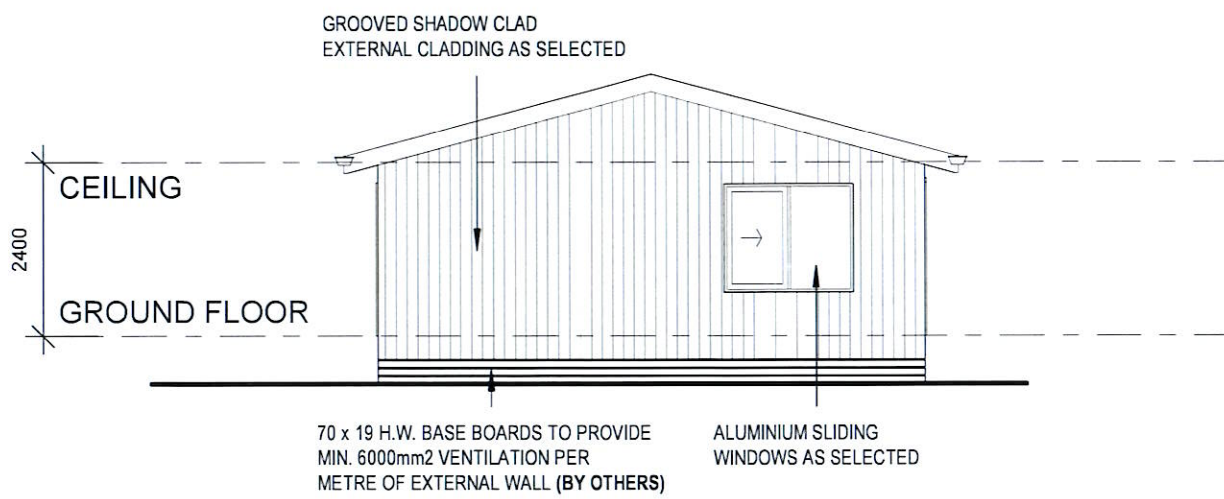
1 : 100





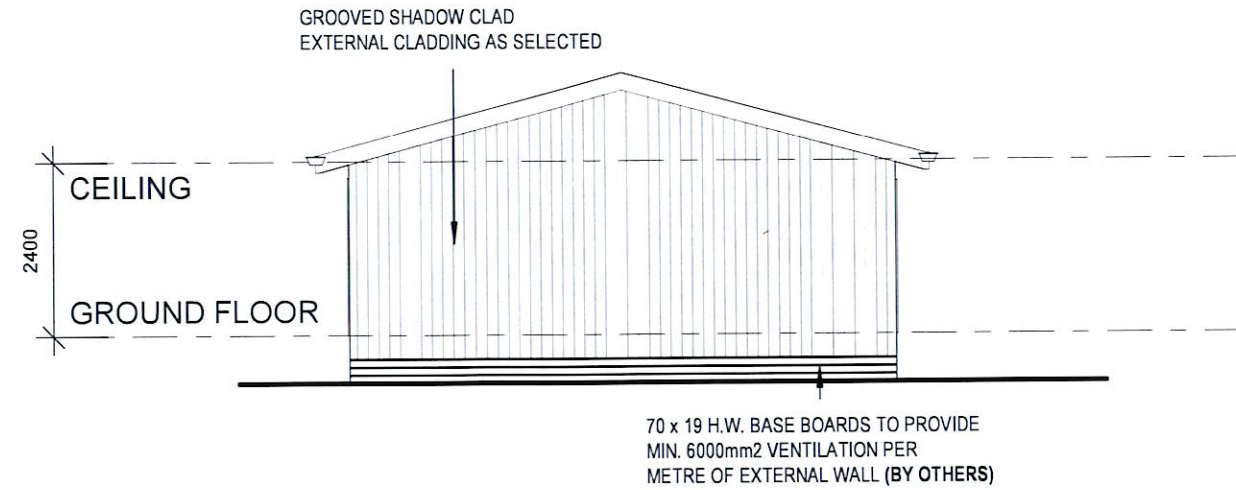
## FRONT ELEVATION

1 : 100



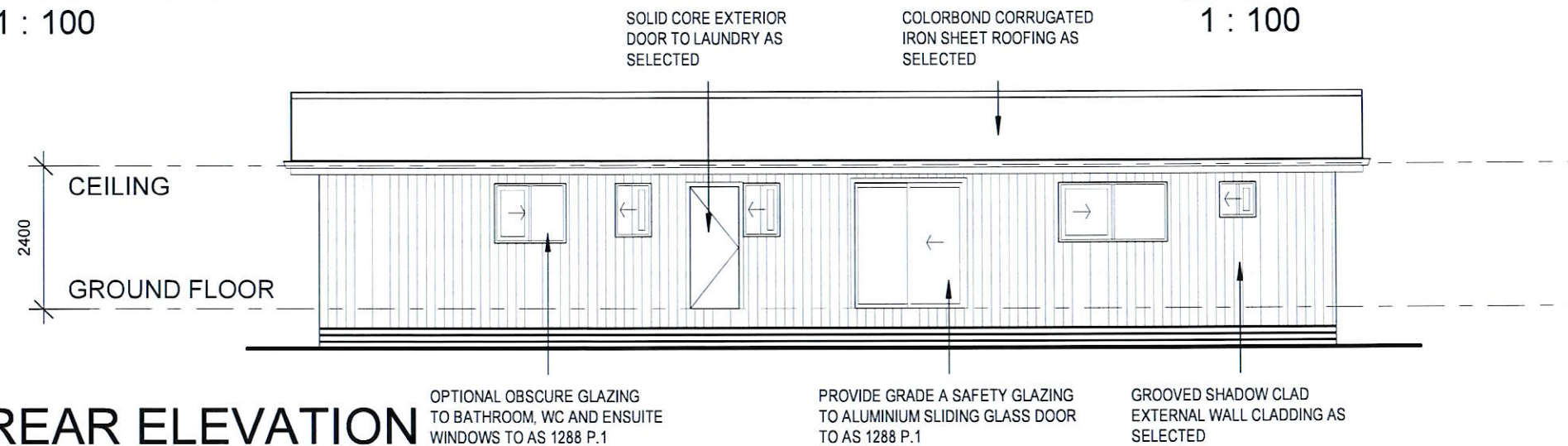
## SIDE A ELEVATION

1 : 100



## SIDE B ELEVATION

1 : 100



## REAR ELEVATION

1 : 100

18-008

SOUTH WEST TAFE, TRANSPORTABLE RESIDENCE