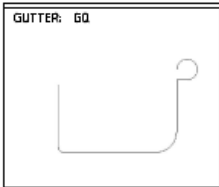


To whom it may concern,

Seeking pricing for the supply of 1 x Dutch Gable double carport as per the illustration on page 2, as well as the supply of a single skillion carport as per the dimensions on page 3.

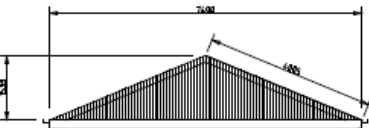
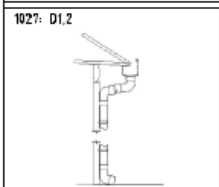
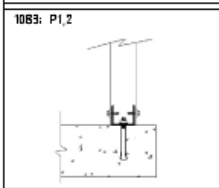
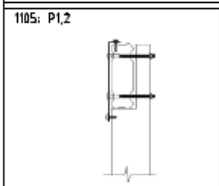
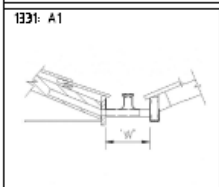
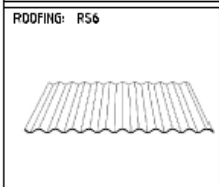
For any questions or clarifications, please call Shannon Priem on 0419 614 387.



WIND CLASS = N2-W33N  
 SIDES BLOCKED = 1  
 PLAN AREA = 48.1 SQ.M  
 PERIMETER = 27.8 M  
 ATTACHED = 7.4 M  
 MODEL = 1

### CCBUILDER PLAN (engineered with 'eXact Design' technology)

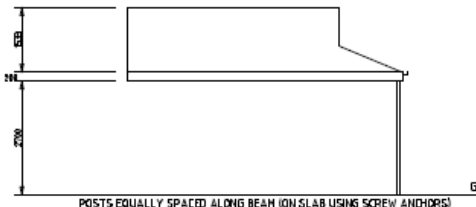
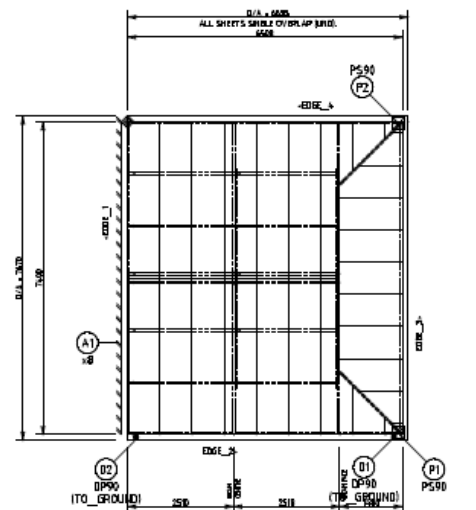
Cpb, Pu, Pwu = 0.7, 0.96, 0.655 kPa  
 fDL(90%), fserv = 0.0168 kPa, 0.423  
 Max Sheer SPAN = 1800  
 Max Truss/Frame Spacing = 2571  
 Weight (ex.conc.) = 765 kg



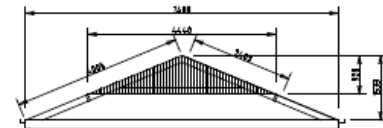
LEFT TRUSS  
 ROOF SHEET (R56)

Beam BS 650 lengths (met)  
 Rafter (gable) = 3941  
 Rafter (inter) = 3887  
 Collar Tie = 4118  
 Note: NO tie rafter end

(COLLAR TIE REQUIRED  
 AT INTERMEDIATE TRUSSES,  
 HEIGHT FROM APEX TO  
 BOTTOM OF COLLAR TIE = 1072)



POSTS EQUALLY SPACED ALONG BEAM (ON SLAB USING SCREW ANCHORS)  
 MAXIMUM SPAN BETWEEN POSTS ALLOWED = 8000



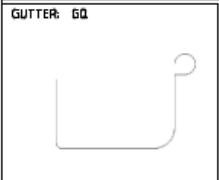
RIGHT TRUSS  
 ROOF SHEET (R56)

Beam BS150 lengths (met)  
 Rafter = 3887  
 Dutch Hip = 2020  
 Dutch Tie = 3378  
 Collar Tie = 4118

(COLLAR TIE REQUIRED  
 AT INTERMEDIATE TRUSSES,  
 HEIGHT FROM APEX TO  
 BOTTOM OF COLLAR TIE = 1072)

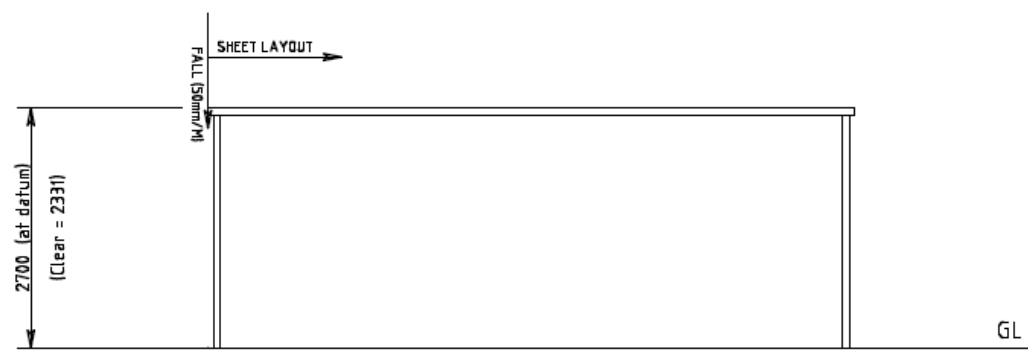
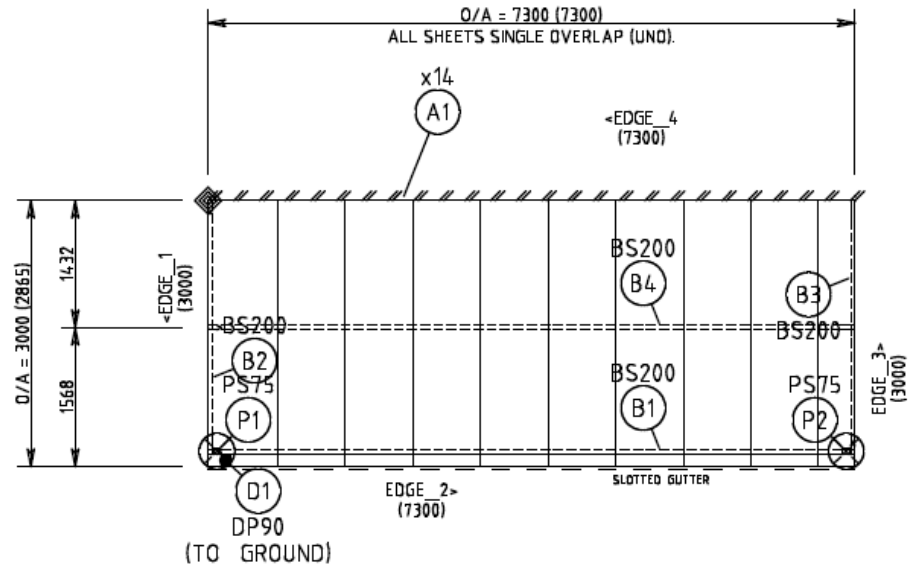
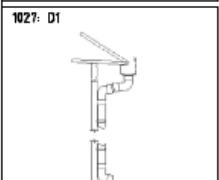
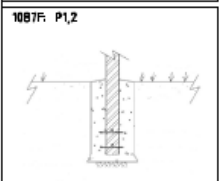
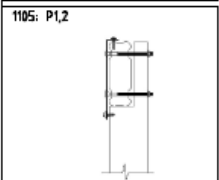
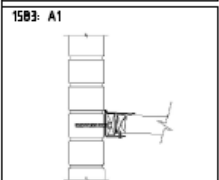
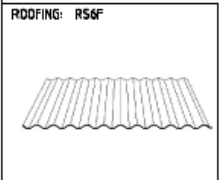
SW=8.7.1a, KB=8.5.8, OB=7Apr21(QLD), DL1031





WIND CLASS = N2-W33N  
 SIDES BLOCKED = 1  
 PLAN AREA = 21.9 SQ.M  
 PERIMETER = 20.6 M  
 ATTACHED = 7.3 M  
 MODEL = 2 (customised)  
 SOIL TYPE = CLAY

Cpb, Pu, Pwu = 0.5, 0.96, 0.415 kPa  
 fDL(90%), fserv = 0.065 kPa, 0.423  
 Max Sheet Spans (S1,S2) = 1000, 1000  
 Weight (ex.conc.) = 245 kg



SW=8.7.1a, KB=8.5.8, DB=7apr21(QLD), QL1031

