

Roof design to be confirmed - below I show 2 options.

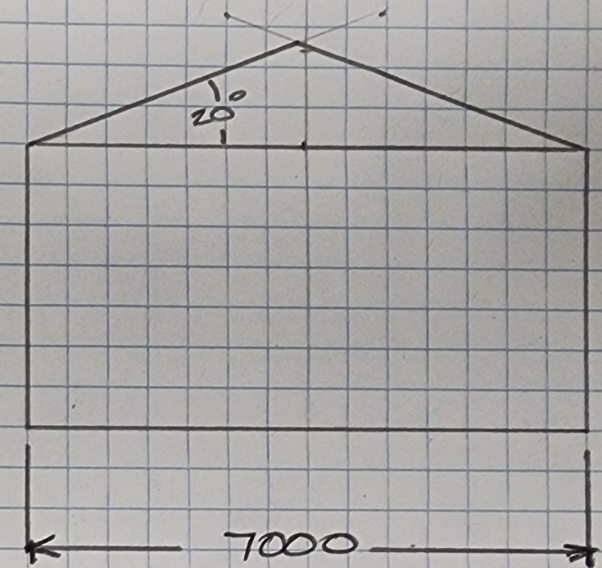
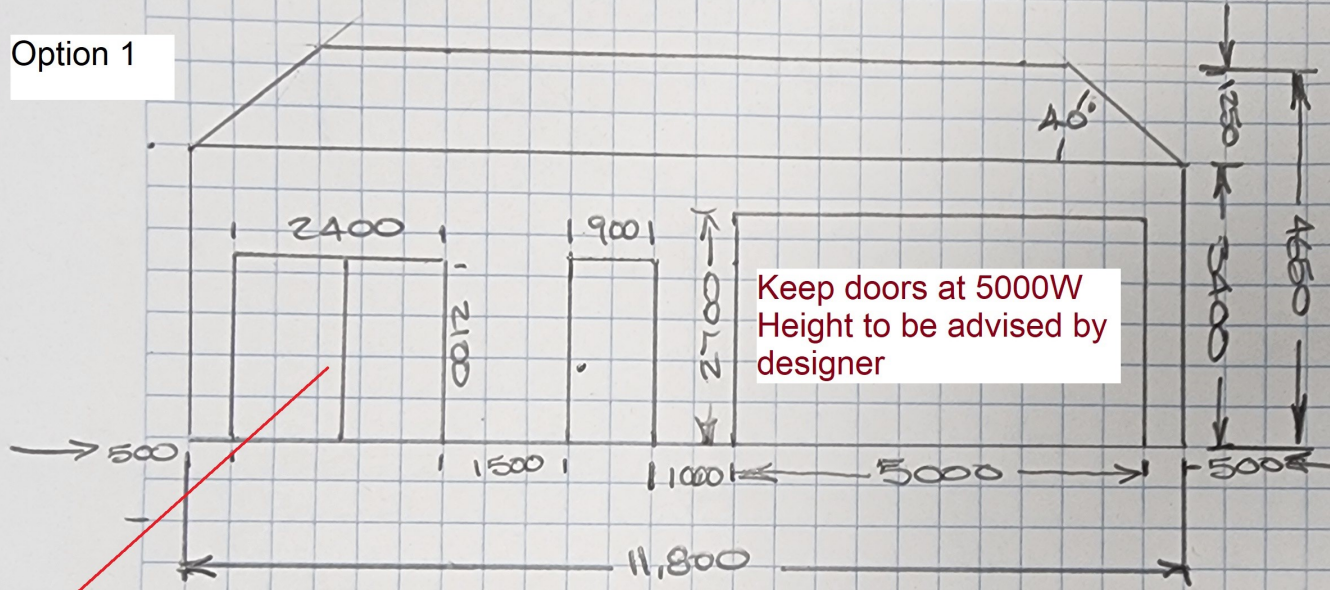
1 Neighbour does not want area past top of wall to be stright - OK with 3400 Wall Height.

Option 1 - is for 40 degree angle on roof at each end - overall height approx 4650 is accepted by neighbours

Option 2 - is for change of total roof direction and 20 degree angle - overall height approx 5700 [may be an issue]

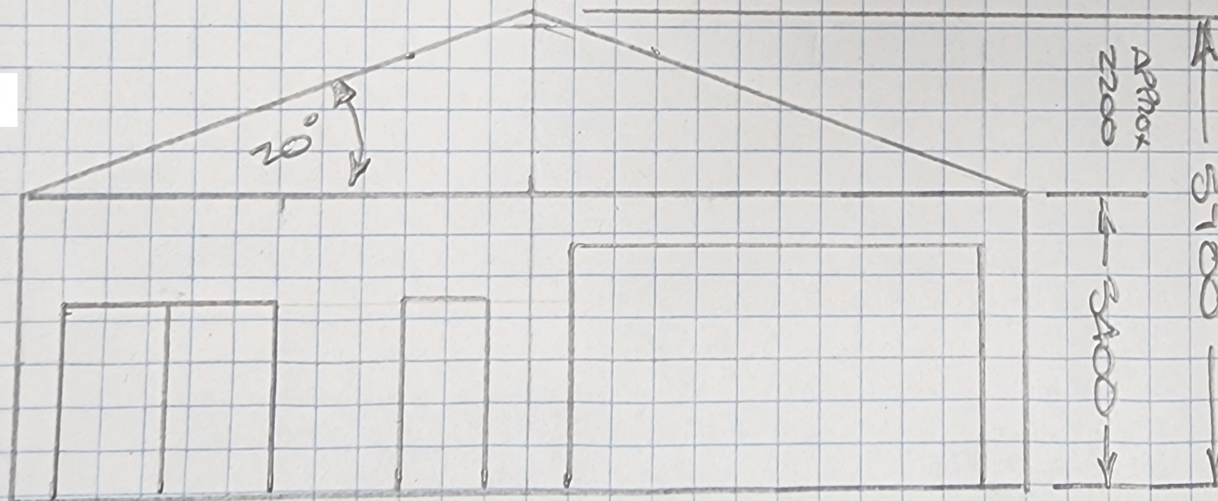
What is better option / solution working with your designs.

Option 1



Change small window to 2100H x 2400W Glass Sliding Door

Option 2



End Wall [Boundary] Fire Rating Required:
90 / 90 / 90 as per council.

Product recommended for internal wall fixing
- HEBEL Power Panel 50mm
Fix sheets internal colourbond wall - frame
structure required.
Columns to be boxed with material also.