

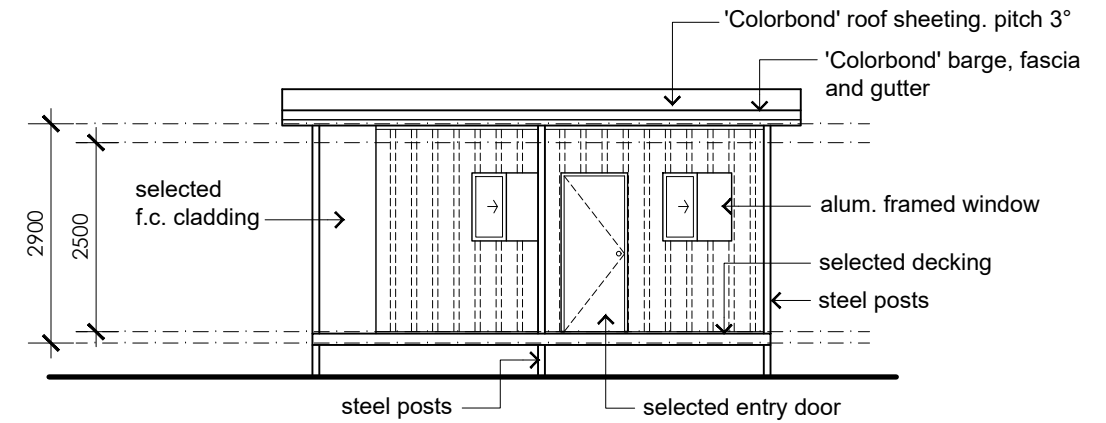
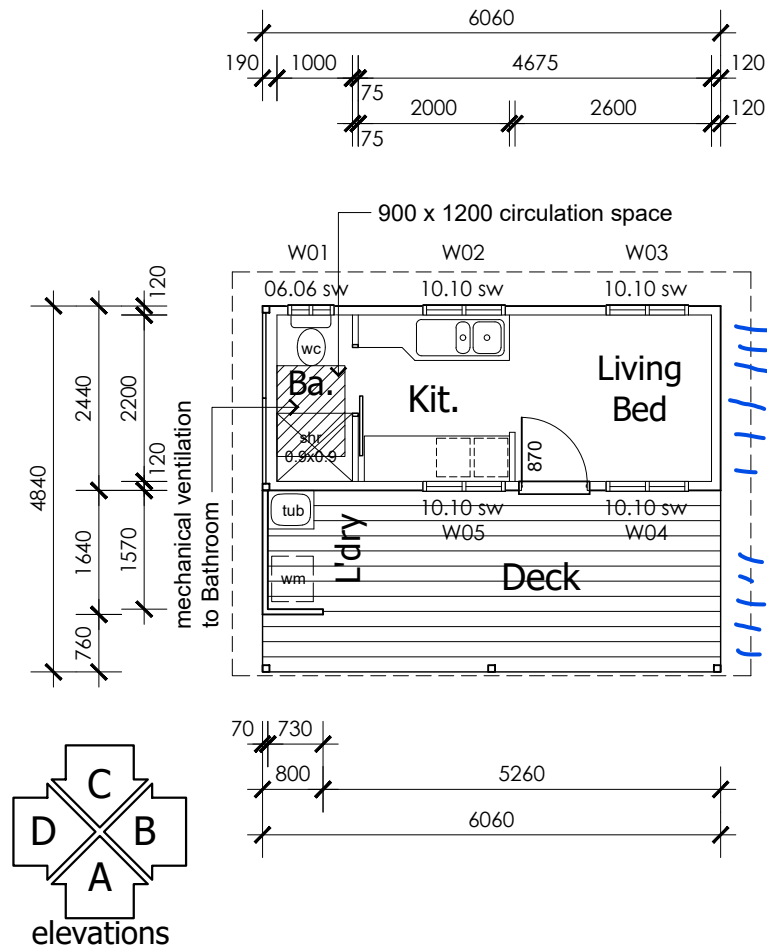
N.C.C. 3.8.5.3 Location of sanitary compartments

Sanitary compartments must not open directly into a kitchen or pantry unless -  
 (a) access is by an airlock, hallway or other room, or  
 (b) the sanitary compartment is provided with an exhaust fan or other means of mechanical exhaust ventilation.  
 Sanitary compartments may open directly into a Kitchen provided mechanical ventilation is provided in accordance with N.C.C. Part 3.8.5.

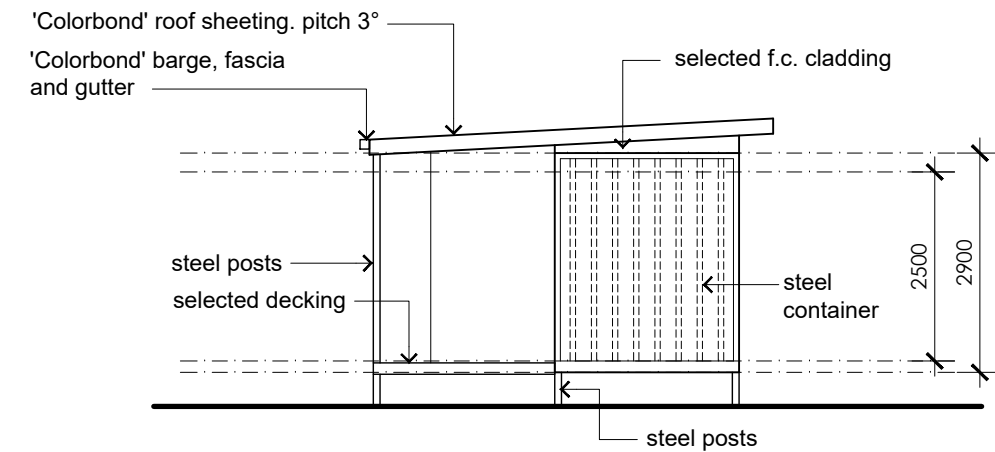
**Window Schedule**  
 All windows head height 2100mm above floor.  
 Security screened Diamond shape in black.  
 Allow for 5mm toughened glass for B.A.L. compliance.

- W01 600h x 610w
- W02 1030h x 1090w
- W03 1030h x 1090w
- W04 1030h x 1090w
- W05 1030h x 1090w

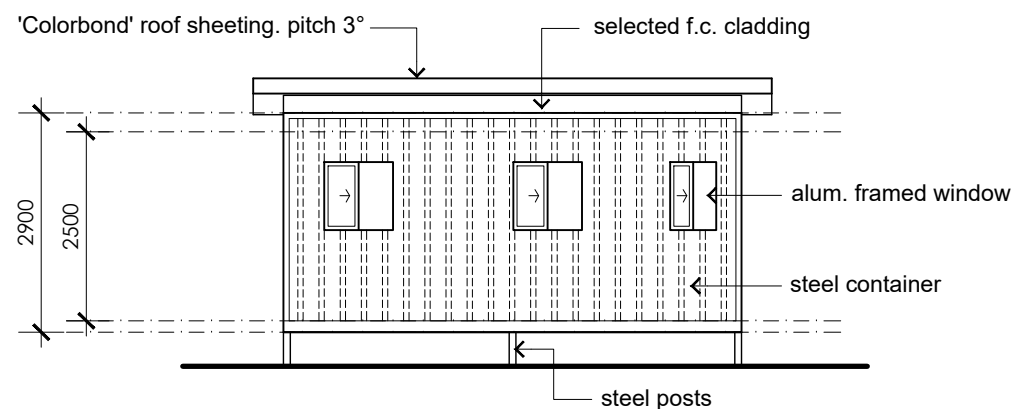
**Livable Housing Design Standard**  
**Bathroom -**  
 WC has 1200mm min. x 900mm min. circulation space.  
 Shower has to be hobless and step free. referenced in the NCC Deemed-to-Satisfy Provisions for general waterproofing of wet areas.  
 WC Suite - toilet with basin over cistern.  
**Doors -**  
 At least one entrance door to the dwelling must have a minimum clear opening width of 820 mm.  
**Sill or threshold -**  
 (i) must have no lip or upstand greater than 15 mm within the sill profile and  
 (ii) have no more than 5 mm height difference between the edge of the top surface of the sill and the adjoining finished surface  
 Door to Bathroom must be minimum clear opening width of 820 mm.  
 The shower rail will also be a grab rail - vertical only.  
 Refer to Part 6.2, Figure 6.2d for location of wall reinforcing.  
 Refer to manufacturers specifications for suitability of requested product.



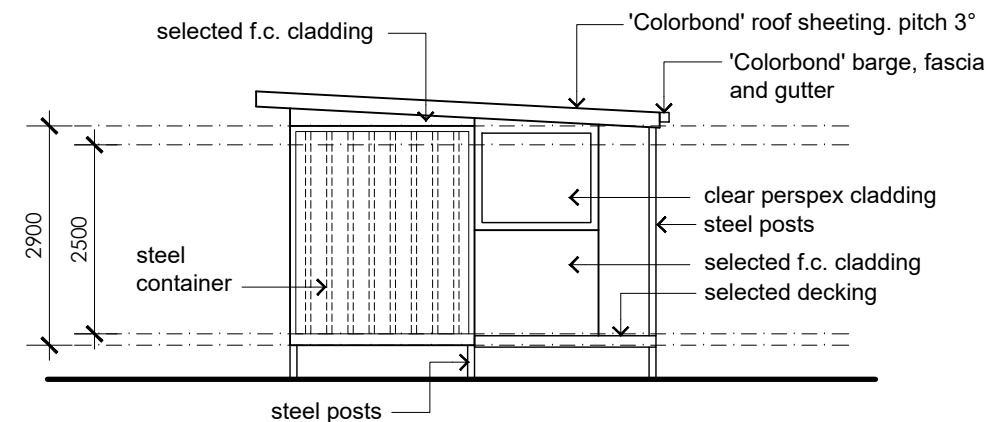
Elevation A



Elevation B



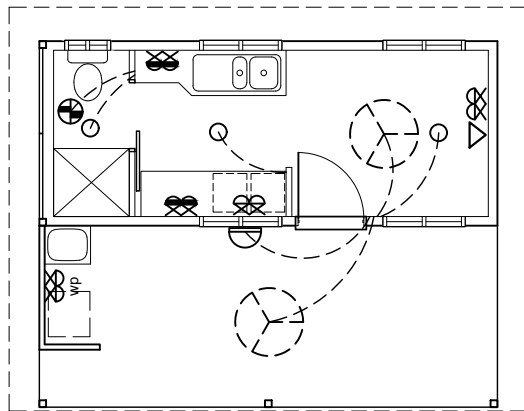
Elevation C



Elevation D

<p><b>Container Drafting Services</b></p> <p><small>COPYRIGHT © 2024 Container Drafting Services Drafting: R.Parker Q.B.C.C. Lic. No. 1255218</small></p>	<p><b>Proposed Granny Flat</b></p> <p>For M. ENDRES and W. STOTT 4528 Bundaberg - Gin Gin Road GIN GIN 4671 Lot 98 S.P. 199496</p>	OWNERS SIGNATURE . . . . .	date 30.04.24 02.05.24	Preliminary Plan Preliminary Plan	scale 1:100 on A3
		MANUFACTURERS SIGNATURE . . . . .			sheet no. <b>02</b> Plan No. 299

FINAL WORKING PLANS SUPERSEDE ALL PRELIMINARY PLANS.  
 WE ACCEPT THAT ALL ALTERATIONS AND VARIATIONS ARE SHOWN.  
 DO NOT SCALE DRAWINGS.



Electrical Plan

ELECTRICAL LEGEND

	DIRECT WIRED SMOKE DETECTOR
	DOUBLE POWER POINT @ 300mm
	DOUBLE POWER POINT @ 1050mm
	DOUBLE POWER POINT @ 1500mm
	DOUBLE POWER POINT @ 2000mm
	SINGLE POWER POINT @ 300mm
	SINGLE POWER POINT @ 1650mm
	EXTERNAL DOUBLE POWER POINT
	TV POINT @ 300
	METER BOX
	AIR CONDITIONER UNIT
	WALL MOUNTED EXHAUST FAN
	ENERGY EFFICIENT DOWNLIGHT
	ENERGY EFFICIENT CEILING MOUNTED LIGHT FITTING
	PENDANT LIGHT
	EXTERNAL MOUNTED WALL LIGHT
	EXTERNAL MOUNTED LIGHT
	CEILING FAN

<h2>Container Drafting Services</h2> <p>COPYRIGHT © 2024 Container Drafting Services Drafting: R.Parker Q.B.C.C. Lic. No. 1255218</p>	<h2>Proposed Granny Flat</h2> <p>For M. ENDRES and W. STOTT 4528 Bundaberg - Gin Gin Road GIN GIN 4671 Lot 98 S.P. 199496</p>	OWNERS SIGNATURE . . . . .	date 30.04.24 02.05.24	Preliminary Plan Preliminary Plan	scale 1:100 on A3
		MANUFACTURERS SIGNATURE . . . . .			sheet no. <b>02</b>
<small>FINAL WORKING PLANS SUPERSEDE ALL PRELIMINARY PLANS. WE ACCEPT THAT ALL ALTERATIONS AND VARIATIONS ARE SHOWN. DO NOT SCALE DRAWINGS.</small>					