

Scope of Work

Brisbane Water Secondary College Umina Campus Shed Construction

Table of Contents

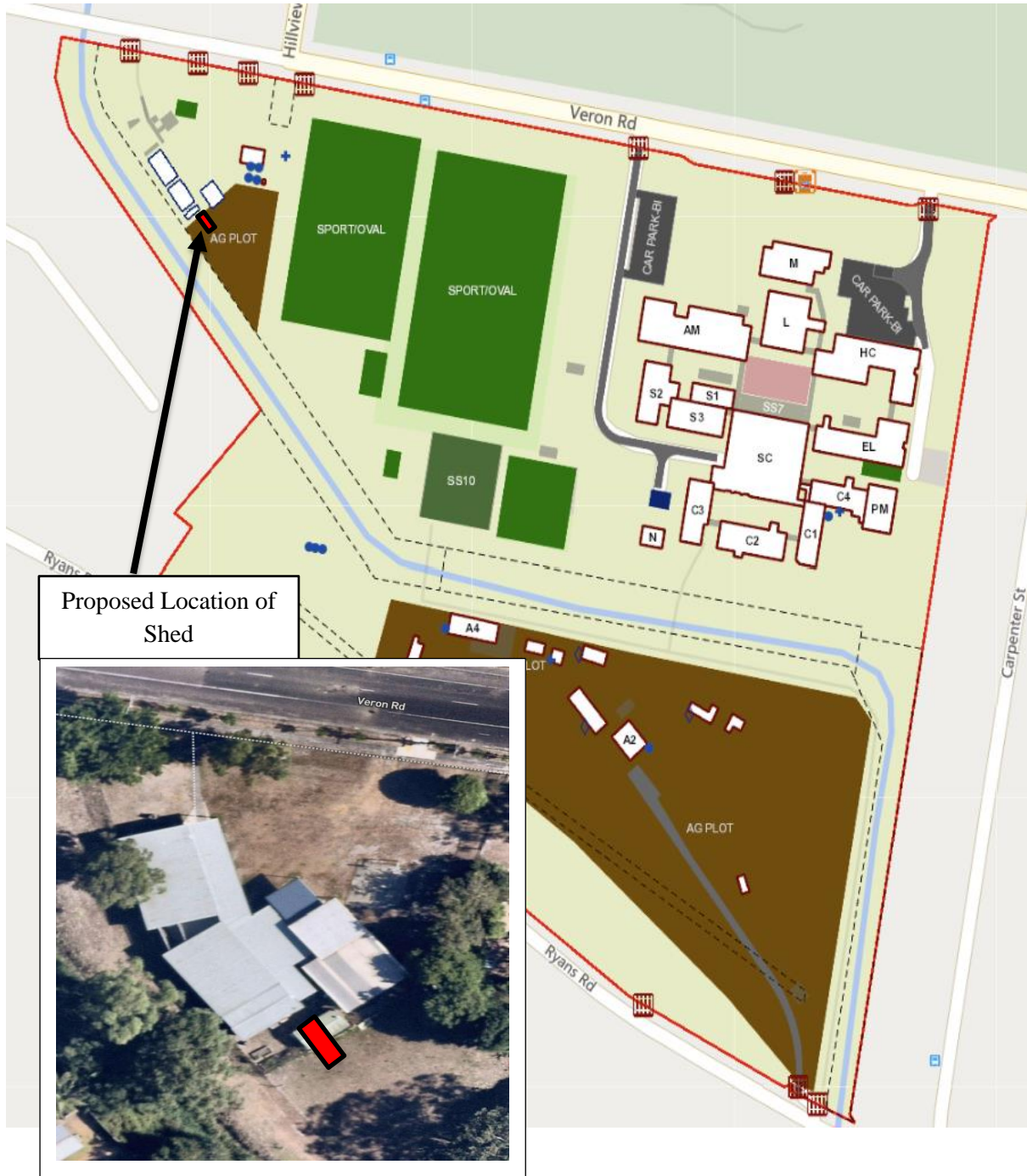
1	Description of Work	4
1.1	Storage.....	4
1.2	Demolition.....	4
1.3	Garden Shed	4
2	Completion.....	6

Scope of Work

This Scope of Work forms part of the Contract

Brisbane Water Secondary College Umina Campus
Veron Rd
Umina Beach 2257

BRISBANE WATER SECONDARY COLLEGE UMINA CAMPUS– SITE MAP

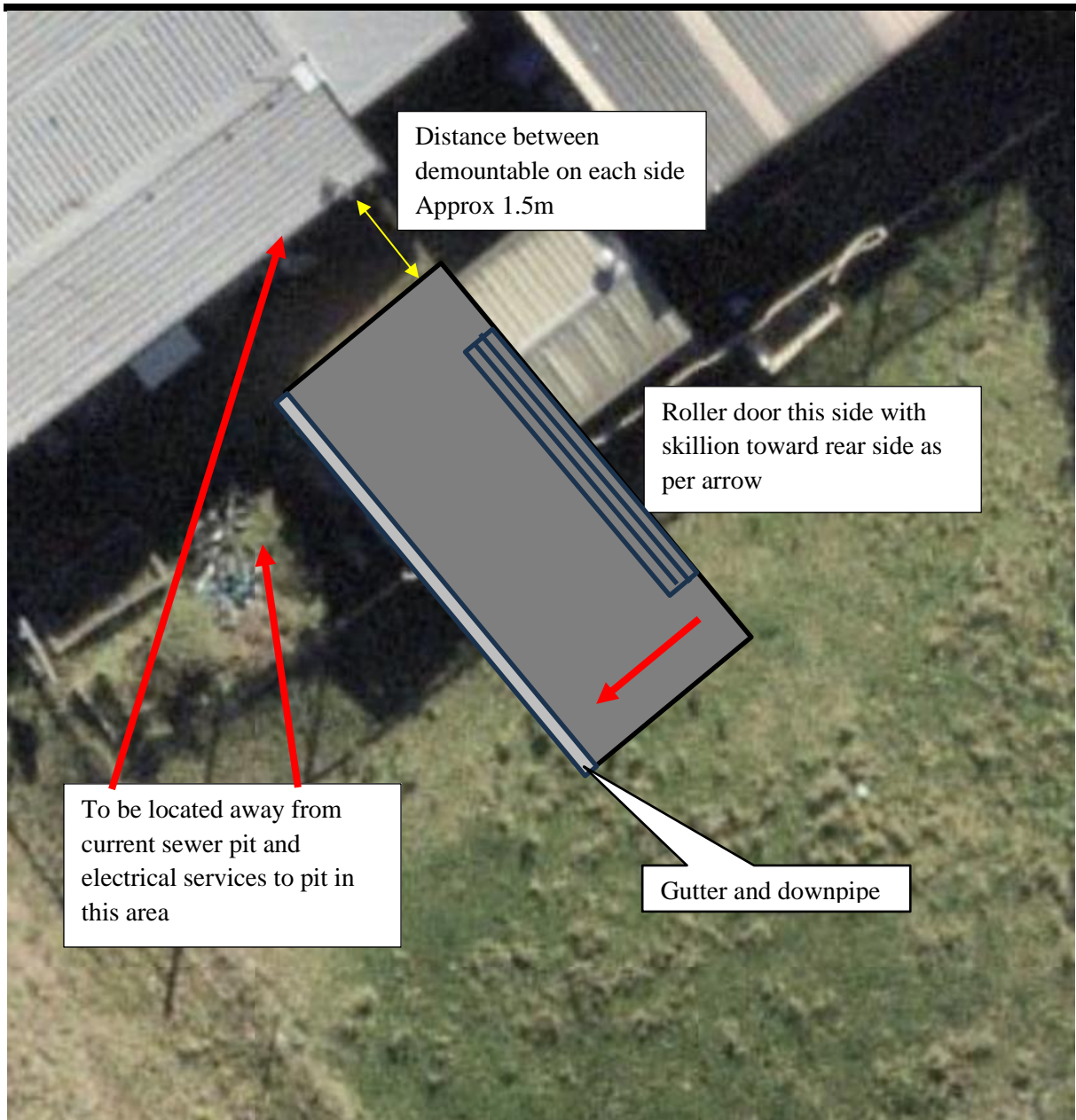


Scope of Work



Existing shed to be removed and disposed.

Scope of Work



Scope of Work

1 Description of Work

1.1 Storage

- a) School will removal and relocate and store all equipment from within the shed to another location.

1.2 Demolition

- a) Contractor to conduct ground service prior to demolition and excavation works.
- b) Remove and dispose shed, concrete slab and associated components.

1.3 Garden Shed

- a) Construct and certify a 3.0m wide x 6.0m long x approx. 2.6m skillion roof steel framed, custom orb cladded storage shed.
- b) Storage Shed to be erected on new engineered, reinforced concrete slab with entry slop to prevent water entry.
- c) Steel framing as per EFSG requirements and manufactures standards.
- d) Front entry wall to have 9mm plyboard backing to prevent impact damage, and enhance frame bracing around roller door.
- e) Roof insulation to be R1.3 55mm insulation blanket or equivalent R1.3 Air Cell insulation to entire roof area.
- f) All cladding to be 0.48 BMT (Base Metal Thickness).
- g) All flashings, ridge & barge capping's at a minimum 0.55mm B.M.T. Bottoms of wall cladding to have toe flashings to eliminate vermin entry.
- h) Guttering and Downpipe to be connected into the closest stormwater line or pit located within the vicinity of the proposed location.
- i) Approx Roller door size 2.1m high x 2.4m wide wind rated roller door.
- j) 2 locking pins for each even spacing to slab for roller door (Similar to photo below).
- k) Colours TBC
- l) Shed location TBC once service location has been completed.

Proposed Design visual

Scope of Work



Locking Pins like below



Scope of Work

2 Completion

Upon completion of the work, the contractor must ensure all debris, rubbish, excess plant, materials and equipment from the site has been removed and the entire work area is left in a safe condition. All debris is to be disposed of at a recognised waste disposal facility in accordance with Local Council regulations and environmental requirements. Remove of all safety fencing, barricades and construction signage.

Prior to handover the contractor is to ensure that the following documents are submitted to the Principal of the contract in accordance with the Preliminaries outlined in the contract documentation.

Operation and/or Maintenance Materials/Manuals	✓
Compliance and Test Certificates	✓
Guarantees	✓
Works as Executed Drawings (CAD & PDF File Format)	<input type="checkbox"/>
SS010 Asset Data Capture Register	<input type="checkbox"/>
AMS Spatial Layouts changes to AMS Site Layouts	<input type="checkbox"/>
Hazardous Materials Report/Clearance Certificate	<input type="checkbox"/>