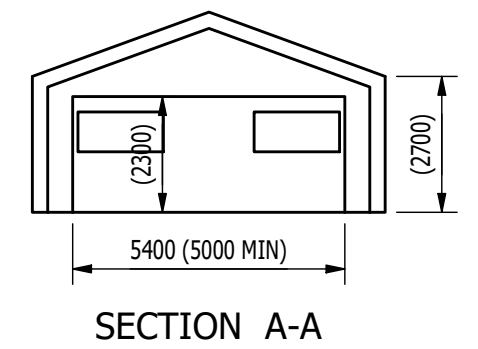
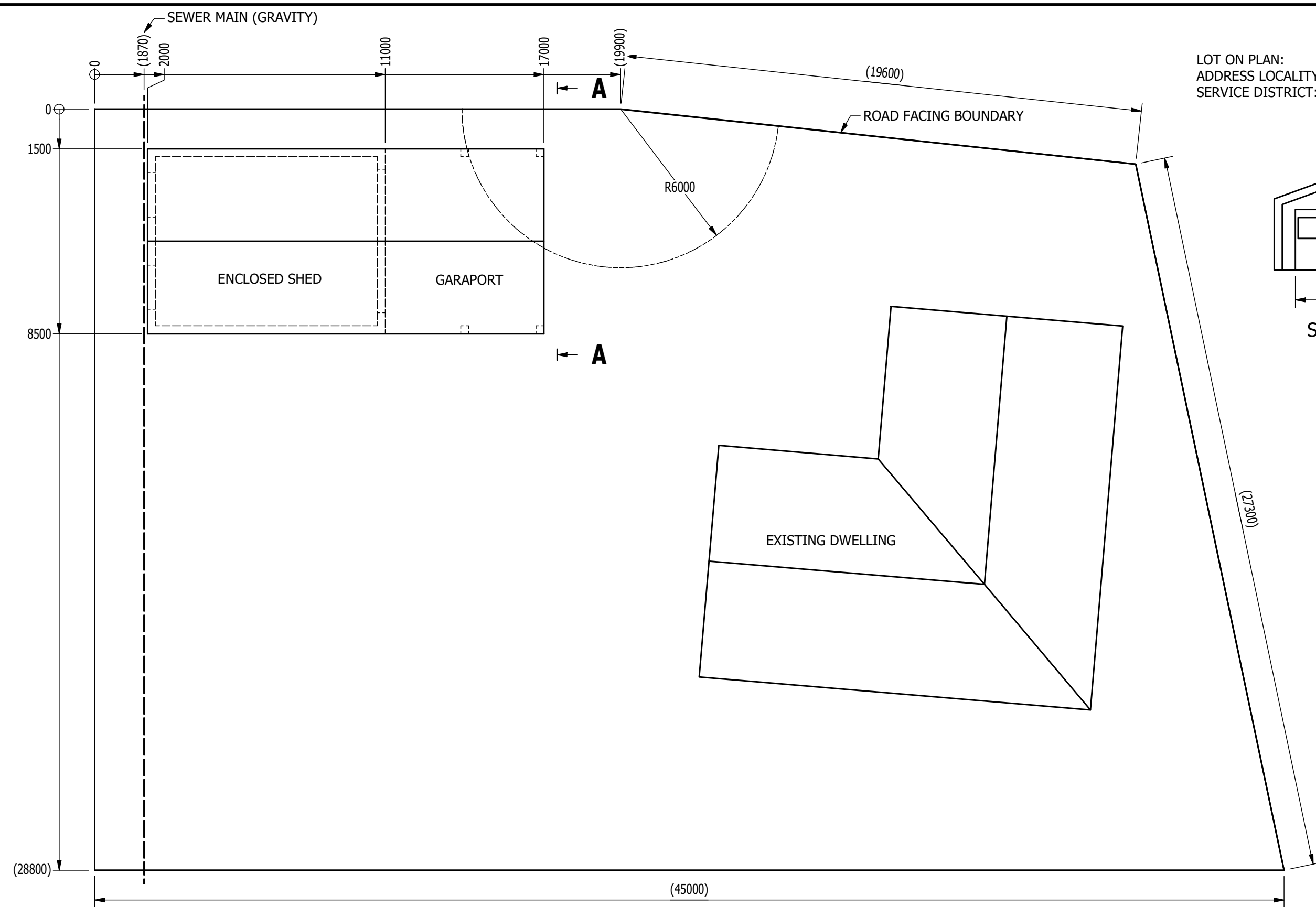


LOT ON PLAN: RP168034/193
 ADDRESS LOCALITY: 10 LUPIN COURT
 SERVICE DISTRICT: TOOWOOMBA



REVISION	DETAILS	DATE	INITIALS
A	ORIGINAL ISSUE	17/05/2021	MJR

Client: MATTHEW ROBE
 Project: 10 LUPIN COURT
 Title: LAND LAYOUT

Date:	17/05/2021	Drawing No.	00000-00	Rev.	A
Scale:	DO NOT SCALE				
Drawn By:	M. Robe	Cad File: 00000-00.idw			
Designed By:	M. Robe				
Checked By:	M. Robe				

TOLERANCE - UNO
 LINEAR ± N/A
 ANGULAR ± N/A
WELDING - UNO
 WELDS N/A
 AS1554.1 Steel Structures
 AS1554.4 High Strength Quenched & Tempered Steels
 DIMENSIONS IN MILLIMETERS - UNO

COPYRIGHT AND REPRODUCTION
 Copyright in the drawings information and data recorded here on and their format and presentation ("data") is the property of Matthew Robe (MJR) and may not be used, copied or reproduced in whole or part for any purpose other than that for which it is supplied by MJR without the prior consent of MJR. MJR is not responsible for any document or part of a document produced containing data unless that document or the relevant part is identical to the document produced herewith ("the accompanying document"). The terms printed on this label are part of the data and the accompanying documents and must be contained or affixed to any reproduction of the data or the accompanying documents.

Sheet Size
A3
 AS 1100-1993
 THIRD ANGLE PROJECTION

⌀ - INDICATES PART IS SYMMETRICAL ABOUT CENTRE LINE UNO.